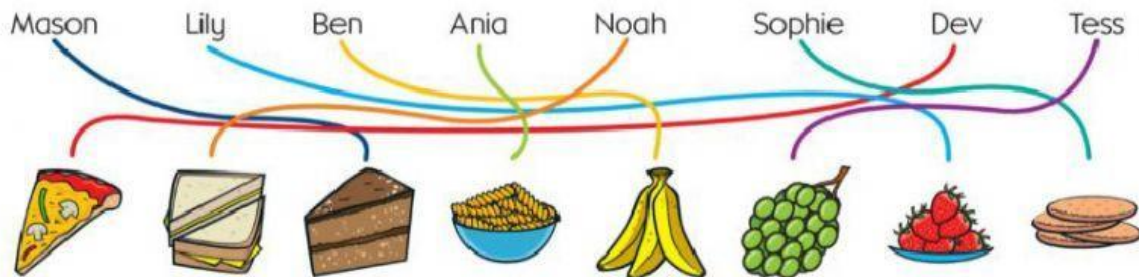


Revision June

Possessive S

1) Follow the lines and write the sentences. Look at the examples.

bananas pizza grapes sandwiches ~~cake~~ ~~strawberries~~ pasta biscuits



1- It is **Mason's** cake

2 - They are **Lily's** strawberries

3 - They are _____ sandwiches

4 - It is _____ pasta

5 - They are _____ bananas

6- They are _____ grapes

7 - They are _____ biscuits

8- It is _____ pizza

Family

2- Look and write.

① Hugo is Frank's dad.

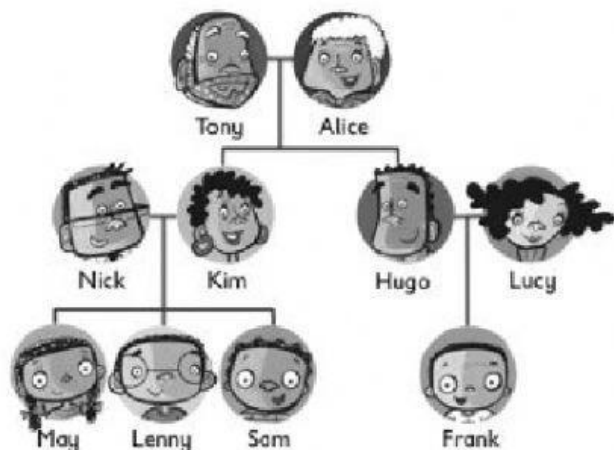
② Tony is Sam's _____.

③ Lenny is _____ cousin.

④ Kim is May's _____.

⑤ May is _____ sister.

⑥ Lucy is _____ mum.



Actions

3- What are they doing?

