

# My town ...

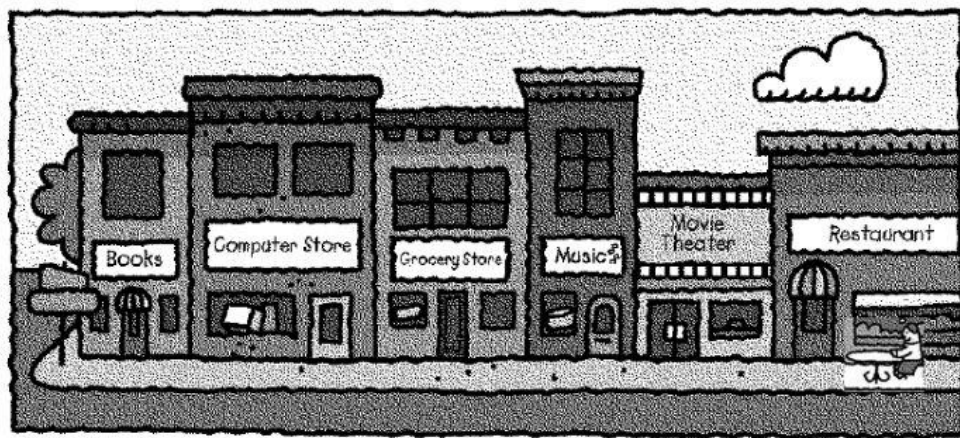
- a. Look at the map and unscramble the words.  
Drag and drop.



1. is the post office. The movie theater behind  
\_\_\_\_\_
2. the movie theater. The bus stop next to is  
\_\_\_\_\_
3. the bus station. in front of The school is  
\_\_\_\_\_
4. is and between the restaurant.  
The park the hospital  
\_\_\_\_\_

5.     and     the fire station     The police station  
      between     the post office.     is
- 

- a. Look at the picture and complete the sentences with next to, between, in front of or behind.



1. The Computer store is \_\_\_\_\_ the Books and the Grocery Store.
2. The Restaurant is \_\_\_\_\_ the Movie Theatre.
3. A table is \_\_\_\_\_ The Restaurant.
4. A tree is \_\_\_\_\_ the Books.
5. The Movie Theatre is \_\_\_\_\_ the Music and the Restaurant.