



An apple tree is \_\_\_\_\_  
because it loses its leaves in the  
winter.

It is \_\_\_\_\_ because it  
produces fruit from its flowers.

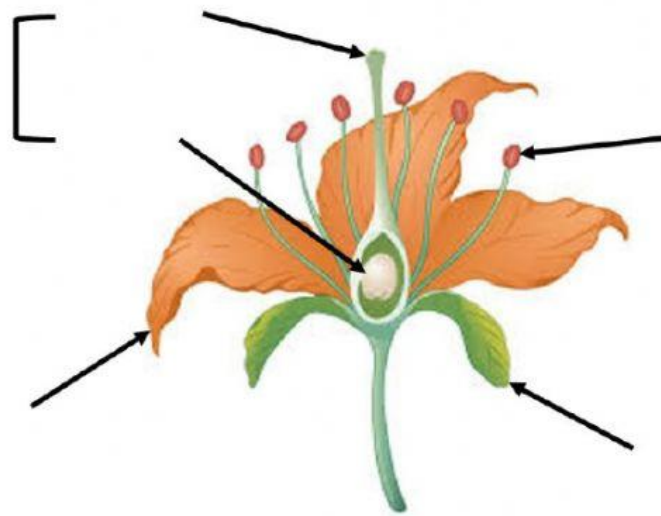


A pine tree is \_\_\_\_\_  
because it keeps its green  
leaves all year.

It is also \_\_\_\_\_  
because it produces cones  
from its flowers.



\_\_\_\_\_ and \_\_\_\_\_ are examples of non-flowering plants. They  
produce spores instead of seeds.



petal

stigma

carpel

ovary

sepal

stamen



\_\_\_\_\_ converts carbon dioxide to oxygen and only occurs during the day.

\_\_\_\_\_ converts oxygen to carbon dioxide and occurs during the day and night.