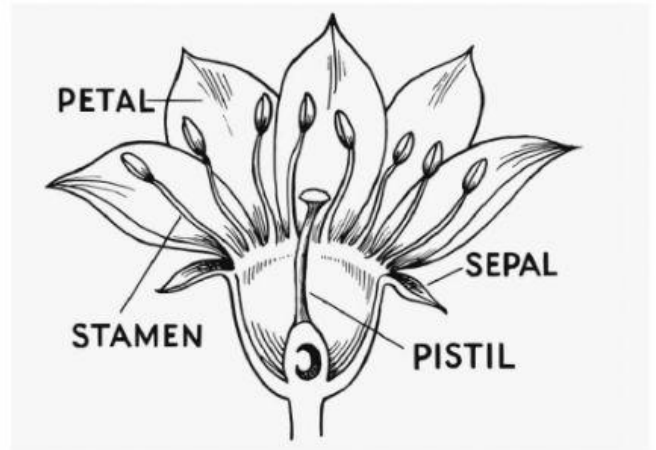


Parts of a Flower

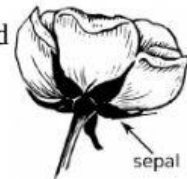
Directions: click below to see a short video about parts of a flower.



Click here to hear the text read aloud:

We are going to look closely at four parts of a flower and what they do: sepals, petals, pistil and stamens.

1-Sepals: A flower starts as a bud. The small green leaves on the outside of the bud is called a sepal. These sepals protect the baby flower inside. Once the flower blooms, the sepals are on the bottom of the flower. Here is another view:



2-Petals: The parts of the flower that have bright colours are the petals. They come in different sizes and their colours attract insects and birds.

3-Pistil: At the centre of a flower is a pistil. At the bottom there is a thick part where the seeds grow.

4-Stamens: The stamens grow around the pistil and are usually thin and long. These parts of the flower are where the pollen is made.

How seeds are made: Pollen from one plant's stamen gets on another plant's pistil by the movement of wind, insects and birds. After that, a seed grows in the pistil. This is called pollination.

Click below to learn about pollination	Click below to see different pollinators.

Questions:

1. How many of each part does a flower have? Pick the correct answer.

Petal

Sepal

Stamen

Pistil

2. Pick the correct answer to fill in the blanks.

Flowers have a powder inside called . The powder is on top of a . A flower can make when the powder gets to the top of the .

3. Flowers have brightly coloured petals to make insects and other pollinators come to the flower. How do insects and other pollinators help flowers. Answer in a complete sentence.