

SMELL, TASTE AND TOUCH

❖ Order the sentences to revise about the five senses.

skin	the organ	Our	Is	to touch.	we use
------	-----------	-----	----	-----------	--------

--	--	--	--	--	--

are	to hear.	we use	Our	the organs	ears
-----	----------	--------	-----	------------	------

--	--	--	--	--	--

Our	Is	the organ	to taste.	tongue	we use
-----	----	-----------	-----------	--------	--------

--	--	--	--	--	--

the organ	Our	to smell.	nose	we use	is
-----------	-----	-----------	------	--------	----

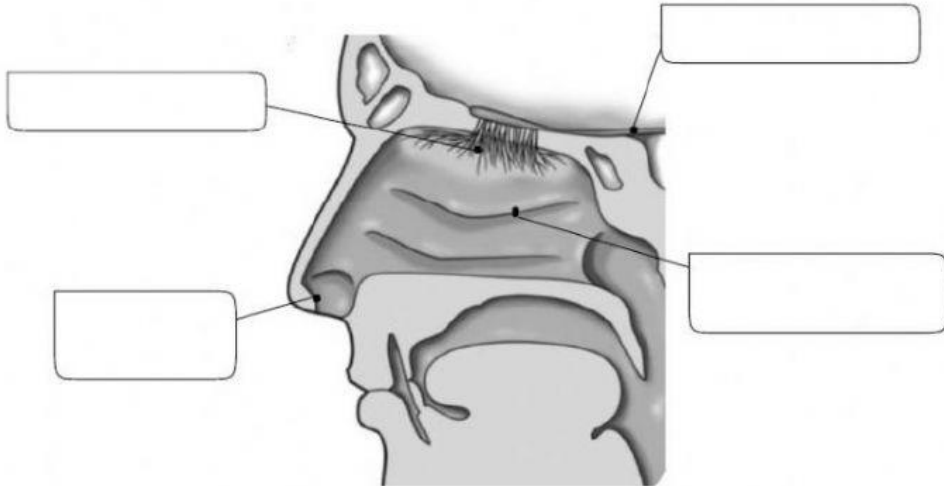
--	--	--	--	--	--

we use	eyes	are	the organs	Our	to see.
--------	------	-----	------------	-----	---------

--	--	--	--	--	--

❖ **Label the sense of smell.**

nostrils	nasal cavity	olfactory nerve	smell receptors
----------	--------------	-----------------	-----------------



❖ **Classify these foods into the corresponding main flavour.**
You have to drag them in the order they appear.



SWEET	SOUR	SALTY	BITTER	UMAMI

❖ Write how these things feel. Be careful with the spelling!

cold

rough

soft

smooth

hard

hot

