

Saint Angel's Bilingual Garden, school and Institute
Ms. Anyela Letrop **SIXTH GRADE**
EXAM I Bimester 2023 – SCIENCE – VALUE: 30%

Answer the exercises as you are required to.

1. Join using a line the concept to its description. (10 %)

Rectum

Once the water is removed, the feces is stored in the step until it can be expelled from the body.

Large intestine

The digestion of food starts here. Begins to water or fill with saliva to moisten the food that we chew. The food is broken down into smaller pieces by our teeth.

Stomach

Here the food is broken down further by the acid in this process. Actually have 3 parts: cardiac, fundus and pyloric.

small intestine

Here we get the waste materials and remove any water to turn the food waste into feces.

Mouth

are the longest part of the digestive tract. Here the food is broken down chemically so that the nutrients may be extracted into the bloodstream to be carried off to where they are needed.

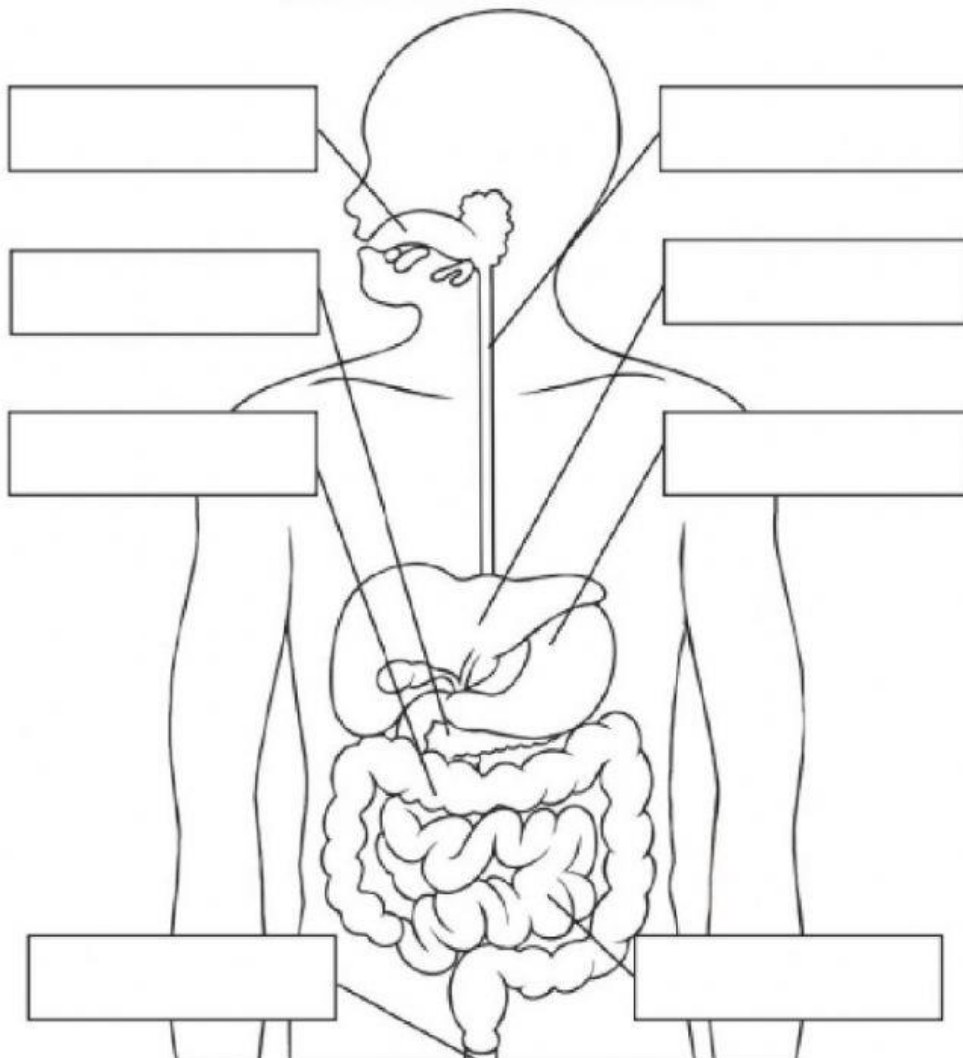


2. Write the digestion process order, using the words in the following table. (5 %)

Stomach	Small intestine	Mouth	Large intestine	esophagus
---------	-----------------	-------	-----------------	-----------

1. _____ 4. _____
2. _____ 5. _____
3. _____

3. Drag and place correctly the names. (15 %)



- Esophagus
- Anus
- Liver
- Small intestine
- Large intestine
- mouth
- pancreas
- stomach