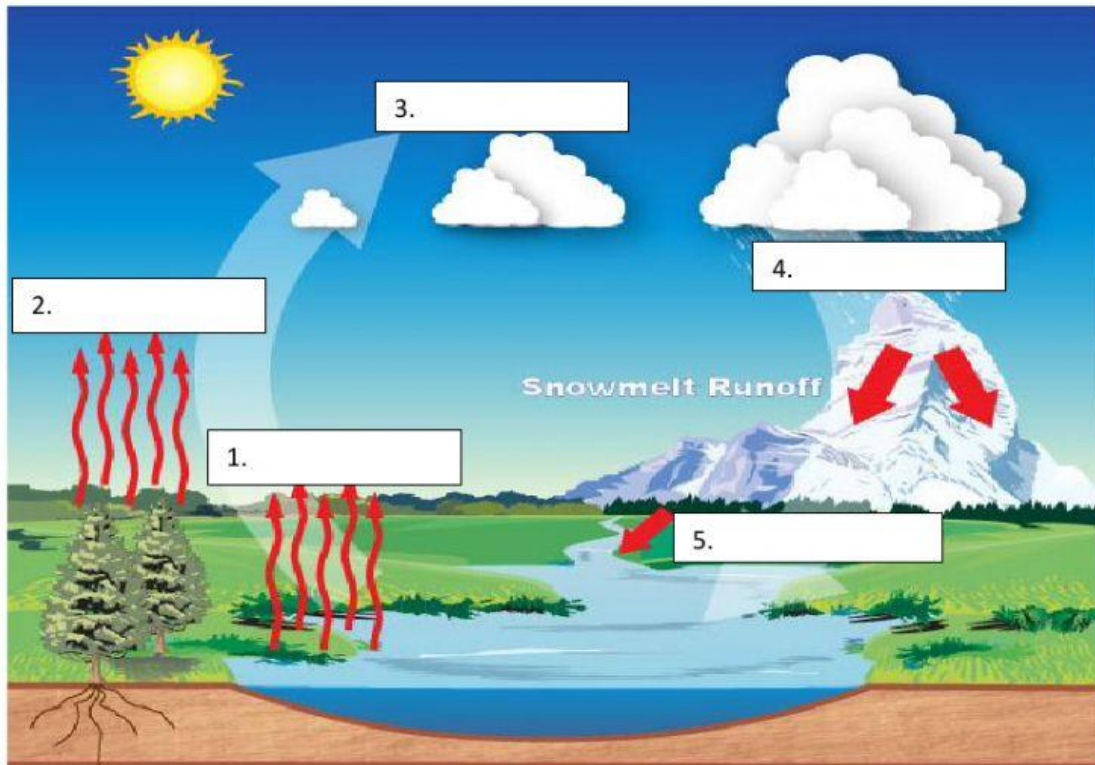


COLD WATER SYSTEM

mind test 1 Subtopic: The Sources, Treatment and Distribution of Water

1. Label the processes hydrologic cycle (Fill in the blank)



2. Match the description processes hydrologic cycle

1. Evaporation

2. Transpiration

3. Condensation

4. Precipitation

5. Runoff

is the evaporation of water from plants through stomata. Of the transpired water passing through a plant only 1% is used in the growth process of the plant. The remaining 99% is passed into the atmosphere.

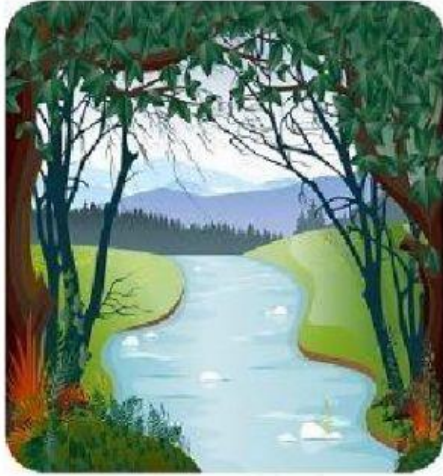
is the result when the tiny condensation particles grow too large, through collision and coalescence, for the rising air to support, and thus fall to the earth. Precipitation can be in the form of rain, hail, snow or sleet.

occurs when there is excessive precipitation and the ground is saturated (cannot absorb anymore water). This runoff flows into streams and rivers and eventually back into the sea.

is the process whereby water vapor in the atmosphere is returned to its original liquid state. In the atmosphere, condensation may appear as clouds, fog, mist, dew or frost, depending upon the physical conditions of the atmosphere.

is the change of state in a substance from a liquid to a gas. In meteorology, the substance we are concerned about the most is water.

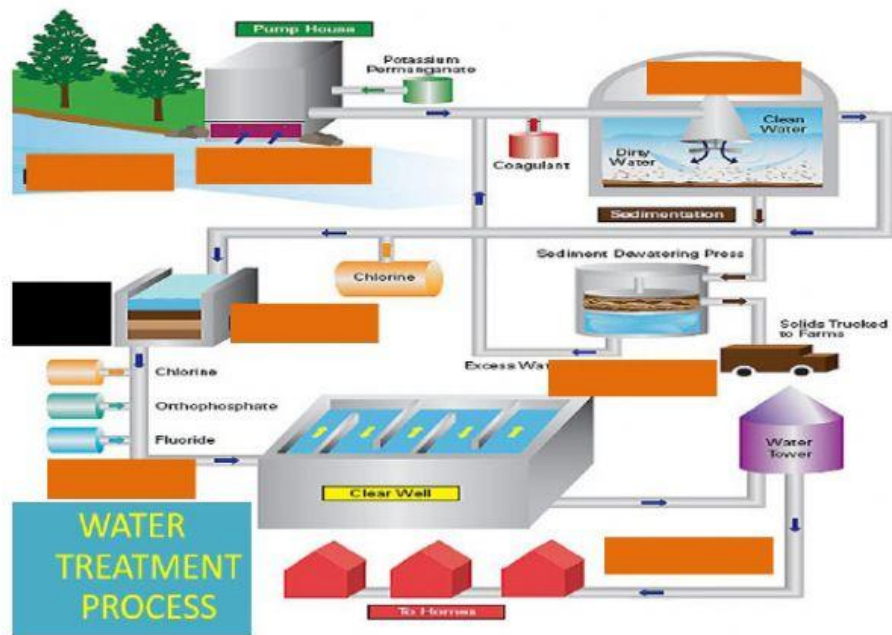
3. Water sources are (drag and drop)



Sea Runoff	surface water wind	Sun groundwater
---------------	-----------------------	--------------------

4. Water treatment process (drag and drop)

Distribution	Sedimentation	Coagulation	Filtration
Disinfection	Run Water	Coagulants	Screening



5. Explain the water treatment (Fill in the blank)

8 WATER TREATMENT PROCESS

INTAKE

SCREENING (PENYARINGAN)

COAGULATION (PENGUDARAAN)

FLOCCULATION (PENGGENTALAN)

SEDIMENTATION (PENGENAPAN)

FILTRATION (PENAPISAN)

DISINFECTION (PEMBASMIAN KUMAN)

DISTRIBUTION (PENGAGIHAN)