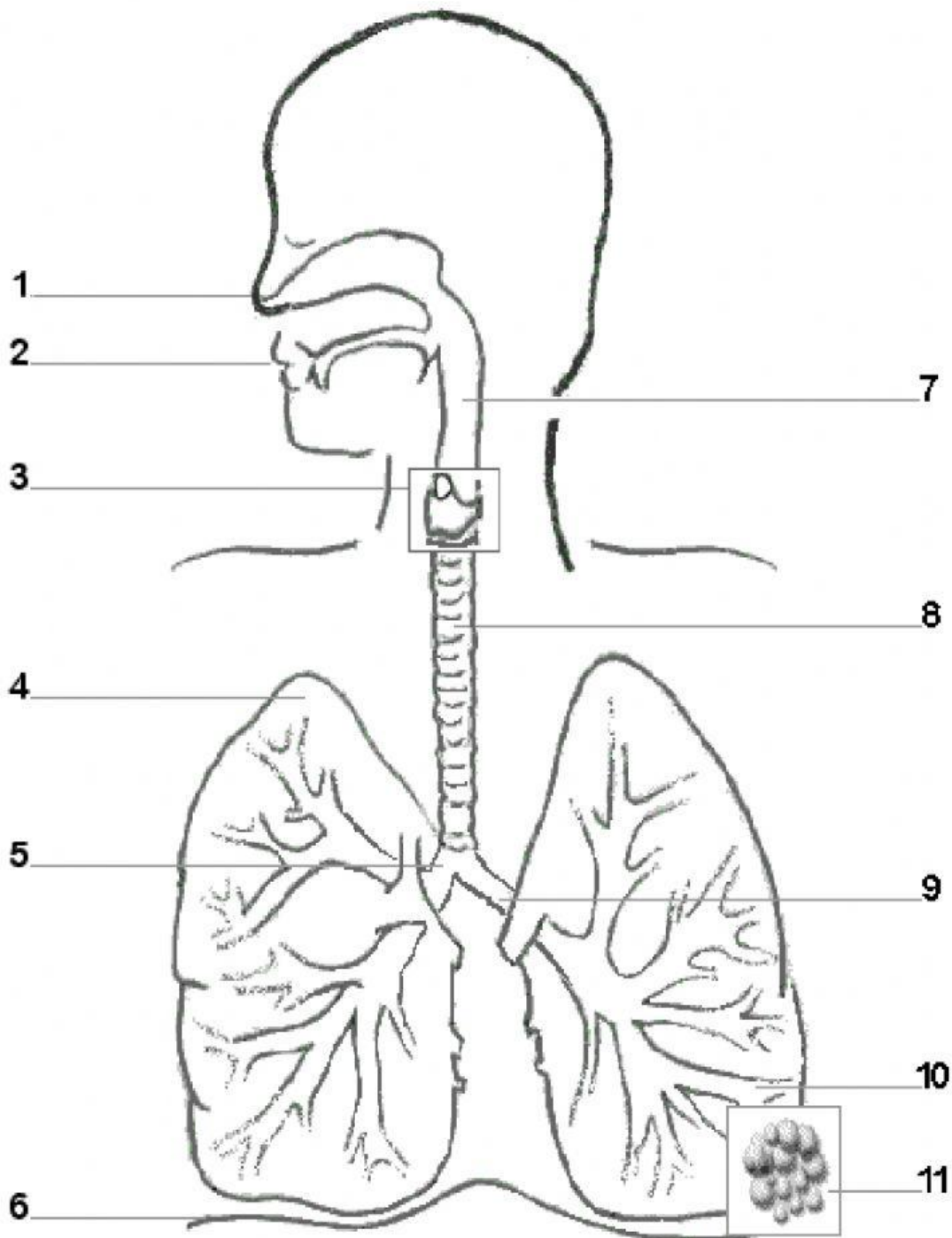


RESPIRATORY
SYSTEM



LABEL THE FOLLOWING PARTS AND USE A DIFFERENT COLOR FOR EACH AREA.

LUNGS
LARYNX
BRONCHI

NOSE
PHARYNX
BRONCHIOLES

MOUTH
TRACHEA
ALVEOLI

DIAPHRAGM