




**1** *Select*  
(Circle) the correct word.

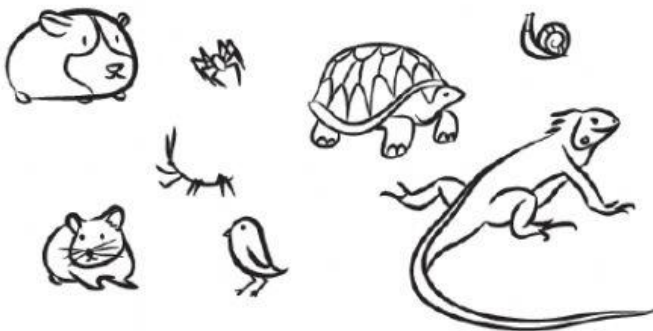
1  He's / She's got a snail.  
He's / She's got a stick insect.

2  He's / She's got a spider.  
He's / She's got an iguana.

3  He's / She's got a tortoise.  
He's / She's got a guinea pig.

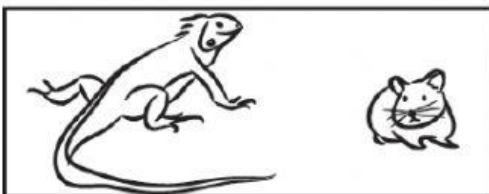
4  He's / She's got a canary  
He's / She's got a hamster.

**2** Write *True* or *False*.



- 1 The canary is bigger than the snail.  
\_\_\_\_\_
- 2 The tortoise is bigger than the hamster.  
\_\_\_\_\_
- 3 The iguana is bigger than the stick insect.  
\_\_\_\_\_
- 4 The spider is bigger than the guinea pig.  
\_\_\_\_\_

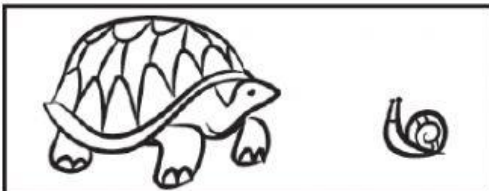
**3** Complete.



1 The \_\_\_\_\_ is smaller than the \_\_\_\_\_



2 The \_\_\_\_\_ is smaller than the \_\_\_\_\_



3 The \_\_\_\_\_ is smaller than the \_\_\_\_\_



4 The \_\_\_\_\_ is smaller than the \_\_\_\_\_

SPANISH	ADJECTIVE	COMPARATIVE (más ___ que)	SUPERLATIVE (el/la más ___)
	tall		
	short		
	long		
	big		
	small		
	old		
	young		
	fast		
	slow		
	soft		
	hard		
	strong		
	weak		
	fierce		
	greedy		
	shy		
	noisy		
	brave		
	safe		
	hot		
	dirty		
	interesting		
	boring		
	beautiful		
	difficult		
	good		
	bad		
	far		