

# POSITION FOR ATTACHING SAFETY LABELS AND STORAGE OF OPERATION & MAINTENANCE MANUAL

Write the suitable title for each safety labels, and put the correct number to determine the position of it based on the following picture

**⚠ WARNING**

Hot water hazard.

To prevent hot water from spurting out:

- Turn engine off.
- Allow water to cool.
- Slowly loosen cap to relieve pressure before removing.

14X-98-11531

**⚠ WARNING**

High pressure hazard at track adjuster.

When adjusting track tension, never open plug more than one turn. Turning further could cause injury from flying plug and grease.

See manual for adjustment instructions.

14X-98-11551

**⚠ WARNING**

To avoid hitting unlocked operation levers, before standing up from operator's seat, do the following:

- Move steering and directional lever neutral and move SAFETY LOCK LEVER (located left of seat) to LOCK position.
- Lower equipment to ground and move SAFETY LOCK LEVER (located right of seat) to LOCK position.

Sudden and unwanted machine movement can cause serious injury or death.

14X-98-11541

**⚠ CAUTION**

WHILE ENGINE IS RUNNING:

1. DO NOT OPEN COVER.
2. KEEP AWAY FROM FAN AND FAN-BELT.

09667-03000

**⚠ DANGER**



Keep a safe distance

17A-98-11530

**⚠ WARNING**

Improper operation and maintenance can cause serious injury or death.

Read manual and labels before operation and maintenance. Follow instructions and warnings in manual and labels on machine.

Keep manual in machine cab near operator. Contact Komatsu distributor for a replacement manual.

09651-03001

**⚠ WARNING**

Hot oil hazard.

To prevent hot oil from spurting out:

- Turn engine off.
- Allow oil to cool.
- Slowly loosen cap to relieve pressure before removing.

14X-98-11521

- Cautions for checking engine room
- Warnings for hot water hazard
- Warnings for adjusting track tension
- Warnings for leaving operator's seat
- Cautions before operating machine
- Warnings for hot oil hazard
- Warning to prevent entry during maintenance Display this sign around the bulldozer.
- Warning for ROPS

ROLL-OVER PROTECTIVE STRUCTURE (ROPS) CERTIFICATION

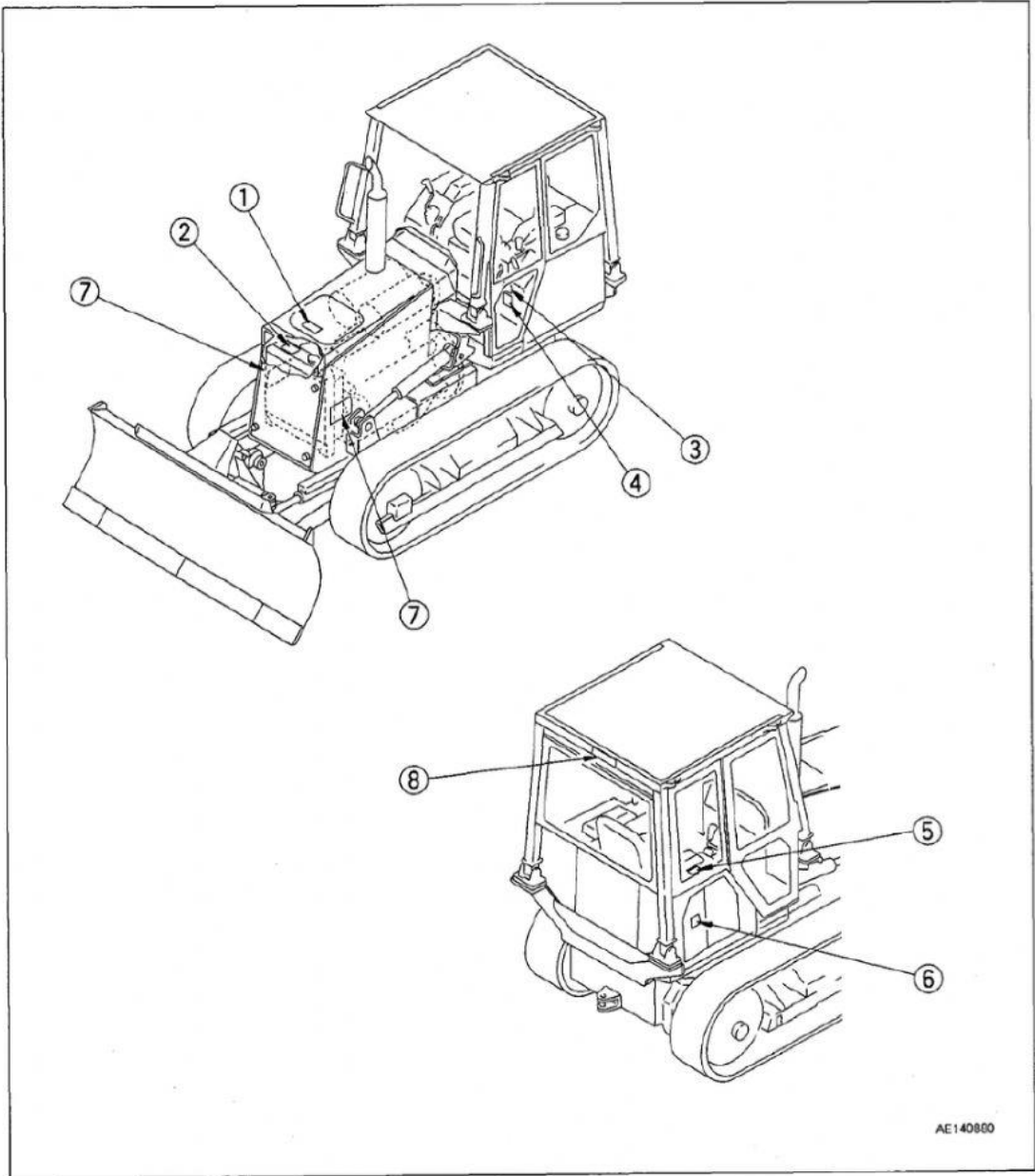
THIS KOMATSU ROPS, MODEL & TYPE NO. [ ] SERIAL NO. [ ] WHEN INSTALLED IN ACCORDANCE WITH THE MANUFACTURER'S INSTALLATION INSTRUCTIONS ON A [ ] FOR MAXIMUM PRIME MOVER MASS NOT GREATER THAN [ ] LBS (kg) IS CERTIFIED TO COMPLY WITH THE FOLLOWING REQUIREMENTS: SAE J2993 (REV. 10/96) (ISO 3471 (REV. '95)) (SAE J1170 (REV. '95))

**KOMATSU**

**⚠ WARNING**


- Altering ROPS may weaken it. Consult Komatsu Distributor before altering.
- ROPS may provide less protection if it has been structurally damaged or involved in roll-over.
- Always wear seat belt when moving.

Komatsu Ltd. Japan 2-3-6 Akasaka, Minato-ku, Tokyo, Japan 09620-30202



AE140800

**⚠ DANGER**



Hazardous voltage hazard. Serious injury or death can occur if machine or attachments are not kept safe distance away from electric lines.

	VOLTAGE	SAFE DISTANCE
LOW VOLTAGE	100V-200V	2m
	6,600V	2m
	22,000V	3m
SPECIAL-HIGH VOLTAGE	66,000V	4m
	154,000V	5m
	187,000V	6m
	275,000V	7m
	500,000V	11m

09801-03001

**⚠ WARNING**



To prevent SEVERE INJURY or DEATH, do the following before moving machine or its attachments:

- Honk horn to alert people nearby.
- Be sure no one is on or near machine or in swing area.
- Rotate cab for full view of travel path if it can be done safely.
- Use spotter if view is obstructed.

Follow above even if machine is equipped with travel alarm and mirrors.

09802-03000

**⚠ WARNING**

Improper use of booster cables and battery cables can cause an explosion resulting in serious injury or death.

- Follow instructions in manual when using booster cable and battery cables.

09809-03000

**⚠ WARNING**

Improper operation and maintenance can cause serious injury or death.

Read manual and labels before operation and maintenance. Follow instructions and warnings in manual and in labels on machine.

Keep manual in machine cab near operator. Contact Komatsu distributor for a replacement manual.

09651-03001

**⚠ WARNING**

To avoid hitting unlocked operation levers, lower equipment to ground and move LOCK LEVER (located near seat) to LOCK position before standing up from operator's seat.

Sudden and unwanted machine movement can cause serious injury or death.

09654-03001

**⚠ WARNING**

To open or close the front or ceiling window, never stand up from the operator's seat before throwing the lock lever to the LOCK position.

Inadvertently touching any of the working equipment control levers might cause the machine to start moving all of a sudden, probably resulting in a serious injury.

09839-03000

**⚠ WARNING**

Hot oil hazard.

To prevent hot oil from spurting out:

- Turn engine off.
- Allow oil to cool.
- Slowly loosen cap to relieve pressure before removing.

09853-03001

**⚠ WARNING**

Hot water hazard.

To prevent hot water from spurting out:

- Turn engine off.
- Allow water to cool.
- Slowly loosen cap to relieve pressure before removing.

09668-03001

**⚠ WARNING**



Compressed spring lubricator and grease are under hazardous high pressure and can cause serious injury or death.

- When adjusting track tension, only turn lubricator ONE TURN, turning lubricator further could cause lubricator and grease to fly off and hurt you. See manual for adjustment instructions.
- When loosening track shoe, if it does not loosen after turning lubricator ONE TURN, ask Komatsu dealer or distributor to disassemble.

09657-03003

**⚠ WARNING**

When raising window, lock it in place with lock pins on both sides.

Falling window can cause injury.

09803-03000

**⚠ WARNING**

Explosion hazard

- Keep away from flame
- Do not weld or drill

09659-53000

**⚠ CAUTION**

While engine is running:

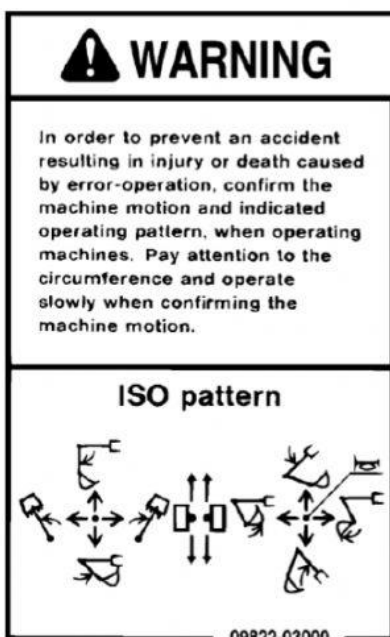
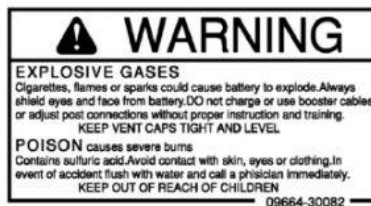
1. Do not open cover.
2. Keep away from fan and fan-belt.

09667-03001



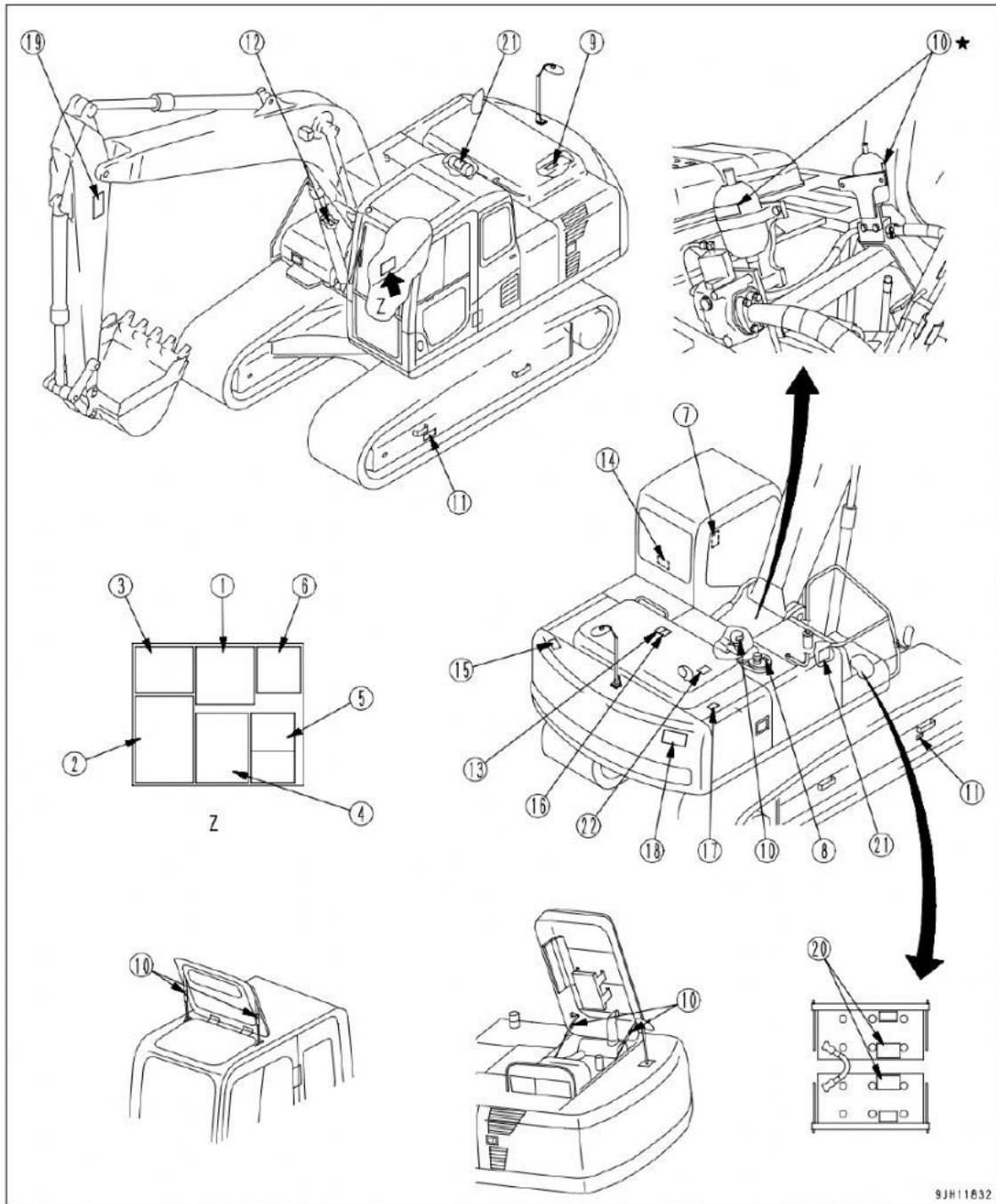
Start the engine only after sitting down in the operator's seat.

Do not attempt to start the engine by short-circuiting the engine starting circuit. Such an act may cause a serious bodily injury or fire.



- Caution before operating or maintaining machine
- Caution before operating
- Caution for seat
- Caution for going close to electric cables
- Caution for operating pattern
- Caution when opening or closing front window
- Caution when stowing front window
- Caution for high-temperature hydraulic oil
- Caution for handling accumulator and gas spring
- Caution for adjusting track tension
- Caution for handling cable
- Caution with high-temperature coolant
- Stopping rotation for inspection and maintenance
- Emergency escape
- Caution against falling
- Caution against falling
- Caution against falling
- Prohibited to enter within swing range
- Be aware of work equipment
- Caution when handling battery
- Prohibition for jump start
- Engine hood lock

# LOCATION OF SAFETY LABELS



9JH11832

★ : if equipped