

#### 4.1 What does a World Map Show?

1. What do we called the people who make maps?

- A. Cartographers
- B. Geographers
- C. Philosophers
- D. Photographers

☐

2. What is the term used for large, mainland masses of the world?

- A. Continents
- B. Oceans
- C. Plates
- D. Seas

☐

3. Which of the following is one of the continents of the world?

- A. African
- B. Antarctica
- C. Arctic
- D. Atlantic

☐

4. How many continents do we have in the world?

- A. Four Continents
- B. Five Continents
- C. Seven Continents
- D. Ten Continents

☐

5. What do we called the giant pieces of jigsaw puzzle, which move on top of the molten rock inside the earth?

- A. Continents
- B. Fold mountains
- C. Mantles
- D. Plates

☐

6. What is the world's largest ocean and continent?

- A. Indian Ocean and Australia
- B. Indian Ocean and Asia
- C. Pacific Ocean and Asia
- D. Pacific Ocean and Antarctica

☐

7. Name the largest ocean in the world.

- A. Atlantic ocean
- B. Indian ocean
- C. Pacific ocean
- D. Southern ocean

☐

8. What ocean is located between the continents of Africa and America?

- A. Arctic ocean
- B. Atlantic ocean
- C. Indian ocean
- D. Pacific ocean

☐

9. Which statement below is true about oceans and continents?

- A. Oceans covers about 25% and continents about 75% of the earth's surface
- B. Oceans covers about 50% and continents about 50% of the earth's surface
- C. Oceans covers about 65% and continents about 55% of the earth's surface
- D. Oceans covers about 75% and continents about 25% of the earth's surface

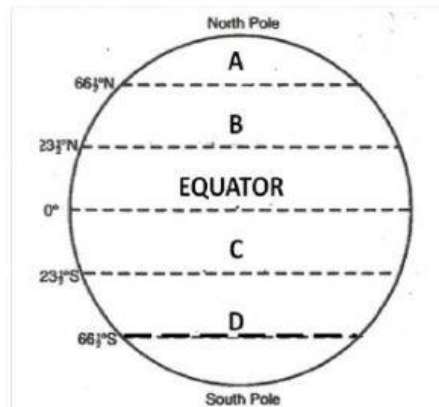
☐

10. What are the horizontal lines and the vertical lines known as respectively?

- A. Eastings and Northings
- B. Northings and Eastings
- C. Southings and Westings
- D. Westings and Southings

☐

11. Look at the diagram below. Name the line of latitude marked C?



- A. Arctic Circle
- B. Antarctic Circle
- C. Tropic of Cancer
- D. Tropic of Capricorn

12. What are the horizontal east – west lines called?

- A. Equator
- B. Hemisphere
- C. Latitude
- D. Longitude

13. Lines that run vertical north – south are known as

- A. Equator
- B. Hemisphere
- C. Latitude
- D. Longitude

14. Name the imaginary line that divides the earth into the Northern and Southern Hemispheres.

- A. Equator
- B. Map
- C. Meridian
- D. Pole

15. Name the imaginary line that divides the earth into the Northern Hemisphere and the Southern Hemisphere.

- A. Equator
- B. Prime Meridian
- C. Tropic of Cancer
- D. Tropic of Capricorn

☐

16. What do we called the imaginary line drawn around the middle of the Earth, forming a great circle that is equal in distance from the North and South Pole?

- A. Equator
- B. Latitude
- C. Longitude
- D. Prime Meridian

☐

#### 4.2 What is the Difference between Weather and Climate?

17. What is weather?

- A. Air movement from high pressure area to a low pressure area
- B. Average weather pattern in a place recorded over at least 30 year
- C. State of the earth's atmosphere at a particular place and time
- D. The total rainfall over a period of one year.

☐

18. Which of the following is described as the amount of water that falls on the earth either in the form of rain, hail or snow?

- A. Precipitation
- B. River
- C. Soil erosion
- D. Underground water

☐

19. Which violent storms are like typhoons that can be up to 500km wide?

- A. Hurricanes

☐

- B. Monsoon winds
- C. Tornado
- D. Twisters

☐

20. Which of the following is described as an average weather pattern in place recorded over at least 30 years?

- A. Climate
- B. Hurricanes
- C. Precipitation
- D. Storm

☐

21. Which of the factor below that climate of a place depends on?

- A. Amount of rain received over a month
- B. Distance from the Equator
- C. Distance from the river
- D. Volume of water in the sea

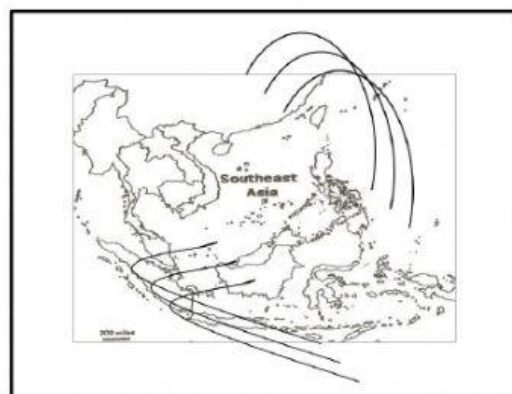
☐

22. What is the climate of Brunei Darussalam?

- A. Equatorial climate
- B. Mediterranean climate
- C. Polar climate
- D. Temperate climate

☐

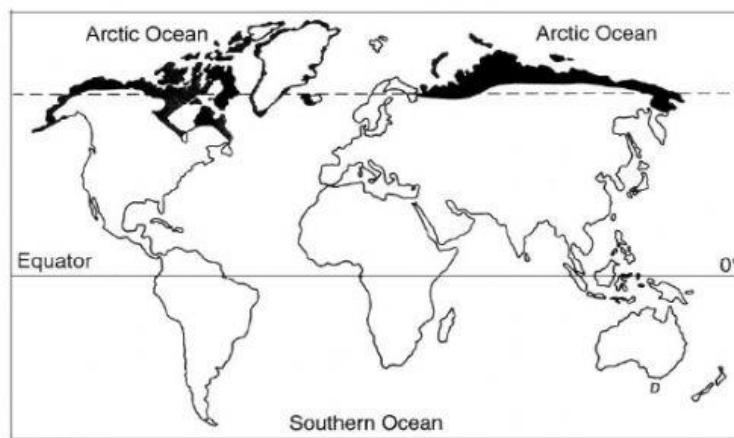
23. Study the map below. What are two monsoon winds that brings heavy rainfall to Brunei Darussalam?



- A. The Northeast monsoon winds and the Southeast monsoon winds
- B. The Northeast monsoon winds and the Southwest monsoon winds
- C. The Northwest monsoon winds and the Southeast monsoon winds
- D. The Northwest monsoon winds and the Southwest monsoon winds



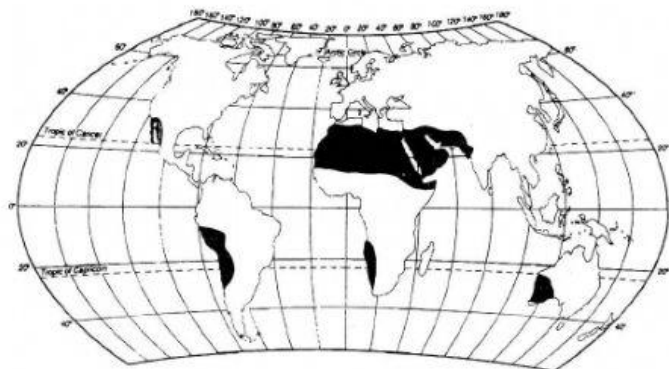
24. The following map shows world climatic zones. What type of climate can be found in the shaded area?



- A. Arid climate
- B. Mediterranean climate
- C. Polar climate
- D. Tropical climate



25. Study the map below.





Name the climatic zone shown in the shaded area above?

- A. Arid
- B. Mediterranean
- C. Polar
- D. Tropical

☐

26. "Temperature can go as high as 50°C during daytime and drop to freezing temperatures at night time." What type of climate does the statement describe?

- A. Arid or desert climate
- B. Mountain climate
- C. Mediterranean climate
- D. Polar climate

☐

27. Which one of the following description refers to Arid zone?

- A. It has dry climate and made up of deserts and steppes
- B. It has four distinct seasons
- C. Warm and quite humid climate
- D. Very cold and dry throughout the year

☐

28. What type of climate is said to be very cold and dry throughout the year?

- A. Arid climate
- B. Polar climate
- C. Temperate climate
- D. Tropical climate

☐

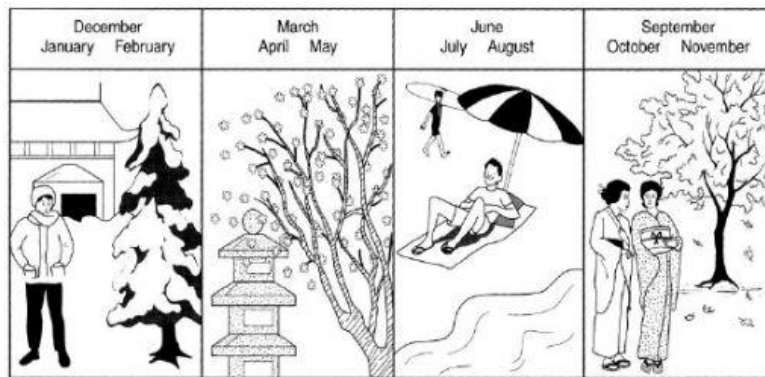
29. The diagrams below show four different seasons experience by a country in the temperate zone. Label each season correctly.

(i)

(ii)

(iii)

(iv)



	(i)	(ii)	(iii)	(iv)
A.	Winter	Spring	Summer	Autumn
B.	Winter	Autumn	Summer	Spring
C.	Winter	Summer	Autumn	Spring
D.	Winter	Summer	Spring	Autumn

☐

30. Which climatic zone experiences spring, summer, autumn and winter?

- A. Arid
- B. Mediterranean
- C. Polar
- D. Temperate

☐

31. What type of climate that has four seasons (Spring, Summer, Autumn and Winter)?

- A. Mediterranean climate
- B. Mountain climate
- C. Temperate climate
- D. Tropical climate

☐

32. Which of the following tribes live in the desert?

- A. Eskimos
- B. Maasai
- C. Nomadic
- D. Penan

☐



33. The tribe in Kenya in Africa practice nomadic cattle herding. Their diet includes meat, milk and blood from the cattle. Who are these tribes?

- A. The Eskimos
- B. The San Bushman
- C. The Maasai
- D. The Bedouin

☐

34. In which climate zone can we find cheetah, giraffes, ostriches and zebra?

- A. Arid region
- B. Rainforest areas
- C. Savannah areas
- D. Temperate region

☐

35. What of the following animals adapt well to dry climates and can live without water for more than two weeks?

- A. Boars
- B. Camels
- C. Giraffes
- D. Tapirs

☐

36. Which one of the following plants can be found in the desert?

- A. Acacia
- B. Cactus
- C. Fir
- D. Maple

☐