

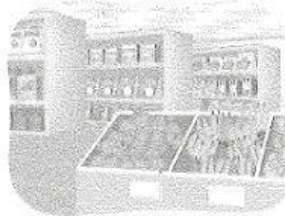
# 2 Around Town

## Lesson 1 Places to Go

### A Match.

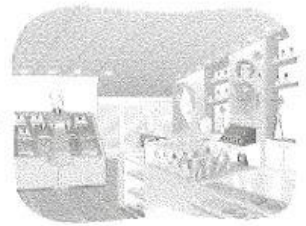
1. movie theater \_\_\_\_

a.



2. post office \_\_\_\_

b.



3. library \_\_\_\_

c.



4. supermarket \_\_\_\_

d.

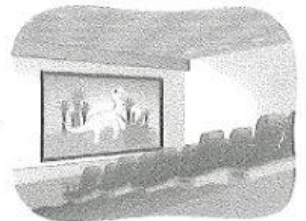


5. department store \_\_\_\_

e.



f.



6. park \_\_\_\_

### B Unscramble.

1. \_\_\_\_\_ 2. \_\_\_\_\_

edrtnpmaet rtsoe

biarlry

3. \_\_\_\_\_ 4. \_\_\_\_\_

ovemi hattere

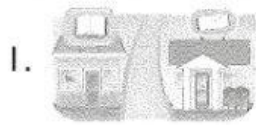
sotp efoifc

5. \_\_\_\_\_ 6. \_\_\_\_\_

tesaeurrpmk

kpar

### C Circle.



1. Where's the post office?

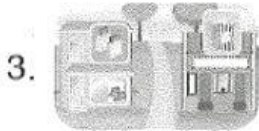
It's across from the library.

It's across from the park.

2. Where's the park?

It's across from the department store.

It's across from the supermarket.

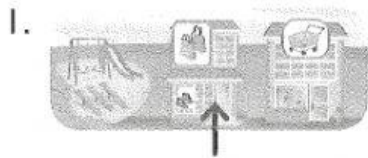


3. Where's the department store?

It's across from the movie theater.

It's across from the post office.

### D Write.



1.

Where's the department store?

It's \_\_\_\_\_ the \_\_\_\_\_ and the \_\_\_\_\_

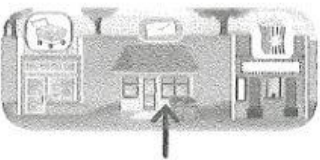
2.



\_\_\_\_\_

\_\_\_\_\_

3.



\_\_\_\_\_

\_\_\_\_\_

### E Read and match.

1. The department store is across from the supermarket.

2. The library is between the park and the post office.

3. The park is across from the movie theater.

