

PART 2 Questions 11–20*Questions 11–14*

Choose the correct letter, A, B or C.



- 11 Stevenson's was founded in
- A 1923.
 - B 1924.
 - C 1926.
- 12 Originally, Stevenson's manufactured goods for
- A the healthcare industry.
 - B the automotive industry.
 - C the machine tools industry.
- 13 What does the speaker say about the company premises?
- A The company has recently moved.
 - B The company has no plans to move.
 - C The company is going to move shortly.
- 14 The programme for the work experience group includes
- A time to do research.
 - B meetings with a teacher.
 - C talks by staff.

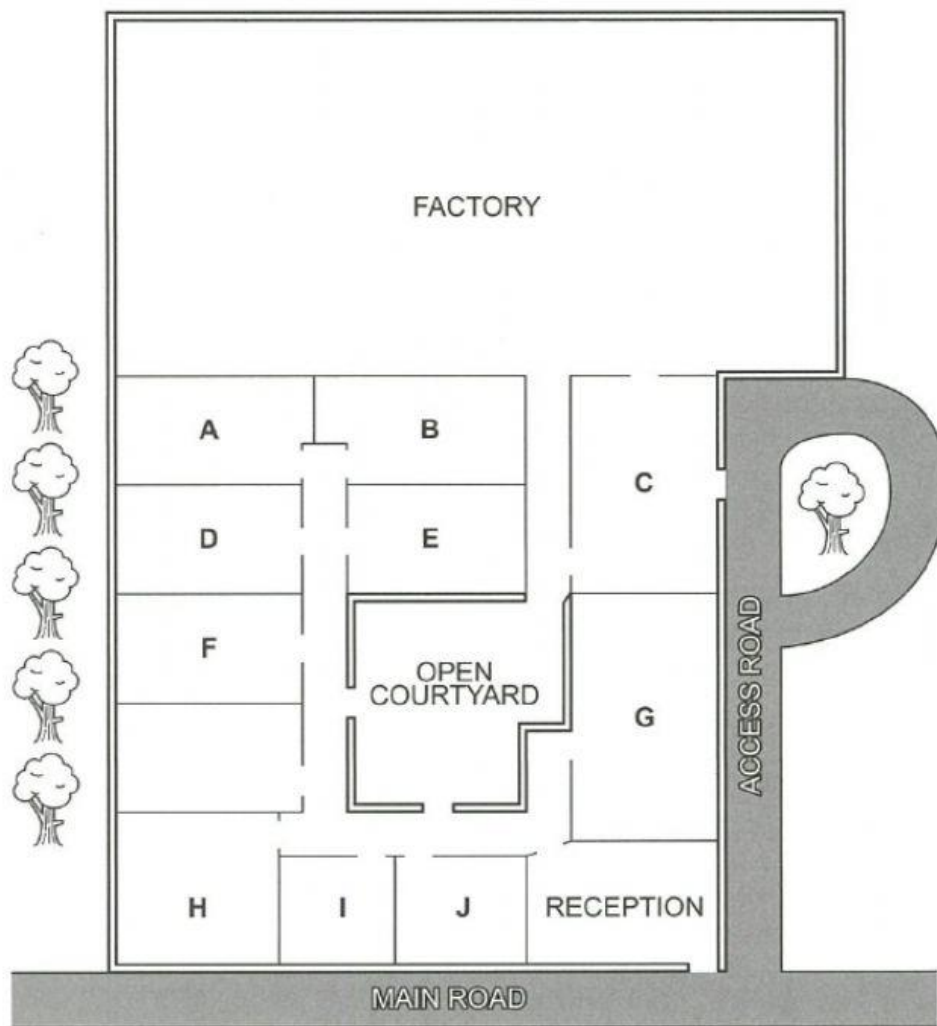
Test 1

Questions 15–20

Label the map below.

Write the correct letter, **A–J**, next to Questions 15–20.

Plan of Stevenson's site



- 15 coffee room
- 16 warehouse
- 17 staff canteen
- 18 meeting room
- 19 human resources
- 20 boardroom