

## MUSIC EXAM UNIT 2

Name and surname:

1.- Write the speech organs names. (0.7)

NOSE

MOUTH

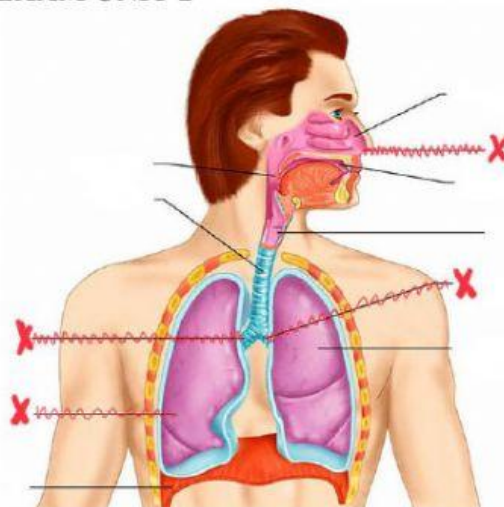
DIAPHRAGM

LUNG

TRACHEA

LARYNX

PHARYNX



MEZZO-SOPRANO

2.- Classify female tessitura, starting with the highest.

High \_\_\_\_\_ → Low

\_\_\_\_\_

BASS

BARITONE

3.- Classify male tessitura, starting with the lowest.

Low \_\_\_\_\_ → High

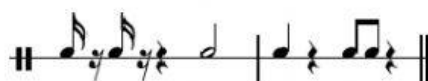
\_\_\_\_\_

CONTRALTO

SOPRANO

TENOR

4.- Guess the correct time signature.



5.-What do the following definitions refer to?

It lengthens the duration of a figure by half its original value: \_\_\_\_\_

Curved line that joins two or more notes of the same pitch, adding their values together: \_\_\_\_\_

It lengthens the duration of the note as the performer or conductor chooses: \_\_\_\_\_

6.- Mark the ties that doesn't act as lengthening signs.



7.- Write the order in which you would play the following scores.

