

## DAILY ACTIVITIES

Complete the dialogues.

How about usually

walk take have breakfast

1. X : What time do you get up in the mornings?

Y : I \_\_\_\_\_ get up very early.

X : \_\_\_\_\_ early?

Y : At \_\_\_\_\_ four o'clock or five.

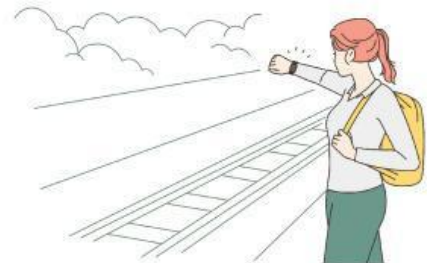


2. X : What do you do after you get up?

Y : I \_\_\_\_\_ then go to school.

X : Do you \_\_\_\_\_ to school?

Y : I always \_\_\_\_\_ a train.



## DAILY ACTIVITIES

Complete the dialogues.

miss    take a shower    skip

late    between    go to bed

3. X : What do you do in the mornings?

Y : I \_\_\_\_\_ then go to my classes.

X : Do you \_\_\_\_\_ breakfast?

Y : Yes. I don't have time for breakfast, but I never \_\_\_\_\_ my lunch.



4. X : What time do you get up?

Y : Usually \_\_\_\_\_ nine and ten.

X : Why do you get up so \_\_\_\_\_?

Y : Well, I \_\_\_\_\_ very late.

