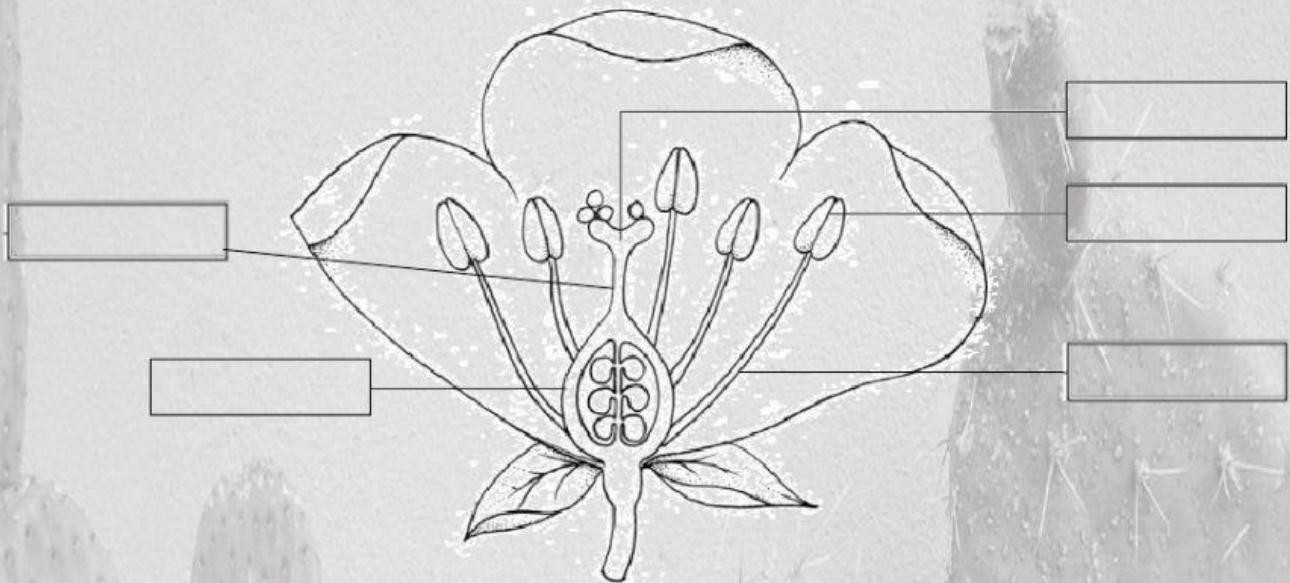


1. Write the parts of the flower:



2. Choose:

The female part of the flower is....

Pistil

Flower

Stamen

The male part of the flower is....

Pistil

Flower

Stamen

3. Write deciduous or evergreen.

Trees that lose their leaves in autumn.

Trees that do not their leaves in autumn.

4. Order the sentences.

Pollen enters the pistil.

Pollen from one flower travels to another flower.

The seeds fall to the ground.

The flower loses its leaves and the pistil becomes a fruit.

The seeds are inside the fruit.

From each seed a new plant can grow.