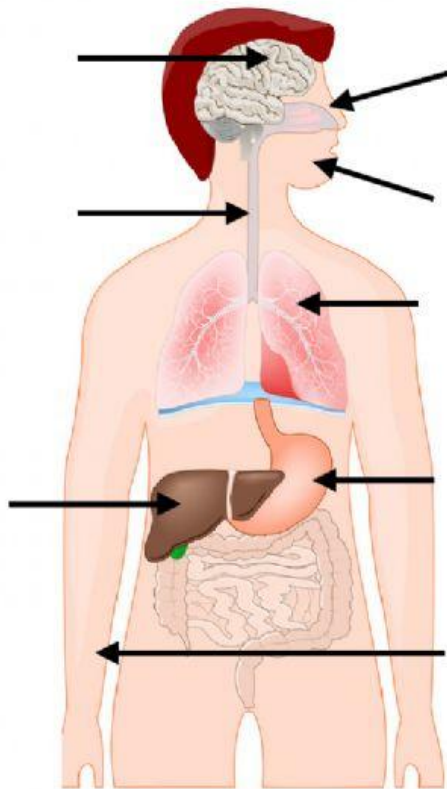


INNATE IMMUNE SYSTEM

(anatomical barriers)



CLICK THE CORRECT ONES

WE HAVE LYMPH NODES TO ACUMULATE IMMUNE CELLS

WE HAVE LYMPH NODES IN DIFFERENT PARTS OF THE BODY

THE FUNCTION OF THE IMMUNE SYSTEM IS TO EXPULSE WASTE SUBSTANCES

THE FUNCTION OF THE IMMUNE SYSTEM IS TO DETECT AND ELIMINATE DANGEROUS SUBSTANCES

THE FUNCTION OF THE IMMUNE SYSTEM IS TO REGULATE THE QUANTITY OF HORMONES

THE FUNCTION OF THE IMMUNE SYSTEM IS TO PROTECT US FROM INFECTIONS

WE HAVE SOME EXTERNAL BARRIERS LIKE THE SKIN TO FIGHT AGAINST BACTERIAS