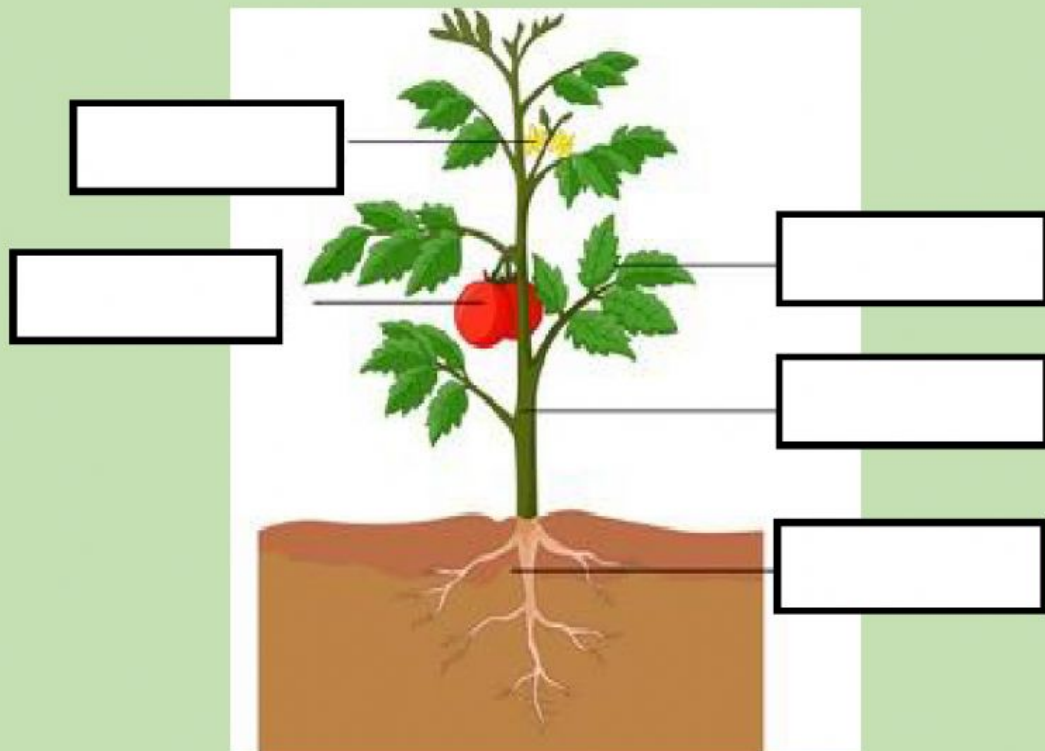


### Growing Plants Check-up 1

Name: \_\_\_\_\_ Class: \_\_\_\_\_

Date: \_\_\_\_\_ Hijri Date: \_\_\_\_\_

1. Write the different parts of the plant. (5 marks)



2. Fill in the blanks. (3 marks)

Roots	Stem	Leaves
-------	------	--------

- The \_\_\_\_\_ absorb sunlight and air.
- The \_\_\_\_\_ carries water to the leaves.
- The \_\_\_\_\_ absorbs water and nutrients from the soil.

3. Write 'T' for True and 'F' for False.

(4 marks)

a. All plants have roots, a stem and leaves.

☐

b. All plants are trees.

☐

c. Water travels from the roots, up the stem and to the leaves and flowers.

☐

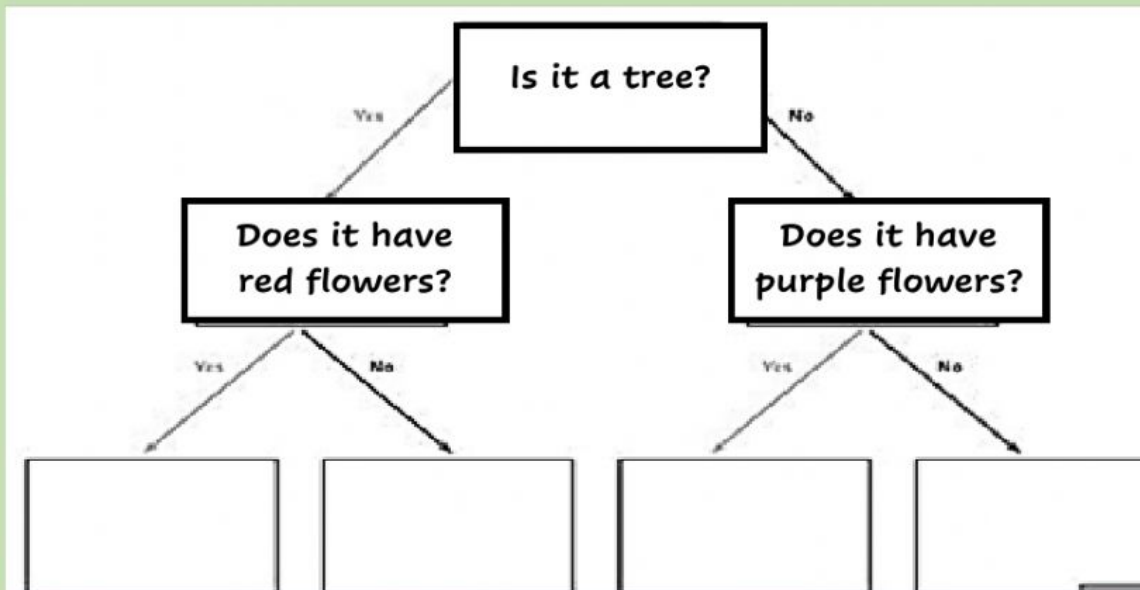
d. Tap roots consist of lots of similar roots that spread out from the bottom of the stem.

☐

**CRITICAL THINKING QUESTION:**

(\_\_\_\_/4 marks)

1. Use the classification key to identify and name the different leaves.



Palm Tree



Papyrus



Lavender



Gulmohar  
Tree