

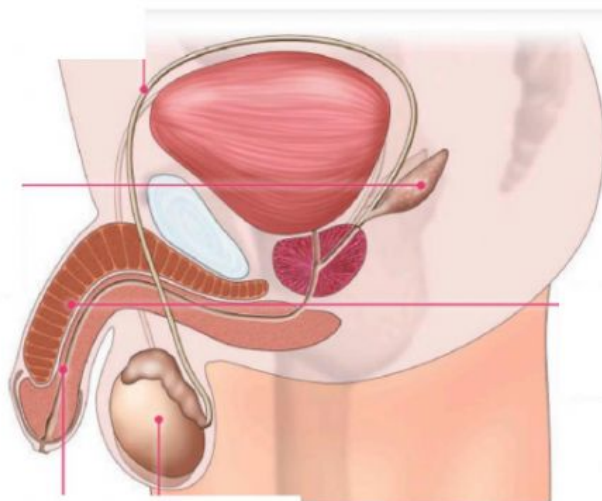
THE REPRODUCTIVE SYSTEM _ TEST 9

1. Complete:

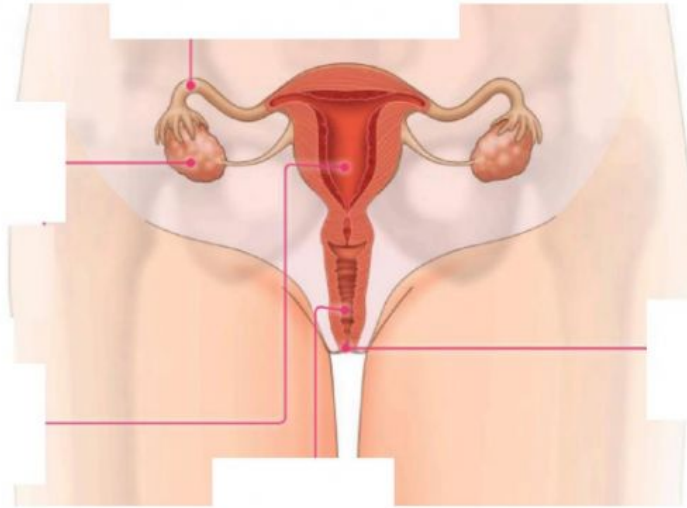
FUNCTION	NAME	MALE FEMALE	INTERNAL EXTERNAL
They are outside the abdominal cavity. They make the sperm.			
The passage that connects the uterus to the outside of the body			
Two glands located behind the bladder. They produce seminal fluid which flows into the urethra.			
The skin that covers and protects the entrance of the vagina.			
The most external part of the male reproductive system.			
They are the size and shape of an almond. They produce and develop the eggs .			
The sack of skin that protect the testicles.			
A tube connected to the vas deferens. The sperm travels through this tube in the seminal fluid to the outside of the body			
A cavity with thick muscular walls where the embryo develops.			
They connect the ovaries to the uterus.			
Two very small tubes that collect sperm from the testicles and transport them to the urethra.			

2. Complete

REPRODUCTIVE SYSTEM



REPRODUCTIVE SYSTEM



Well done!

