

S8P4. g. #1 I can explain the effect that lenses have on light.

#2 I can describe and explain the possible technological application of lenses.

How the Eyes Work Activity

Part 1: Use the words below to fill out the following cloze read.

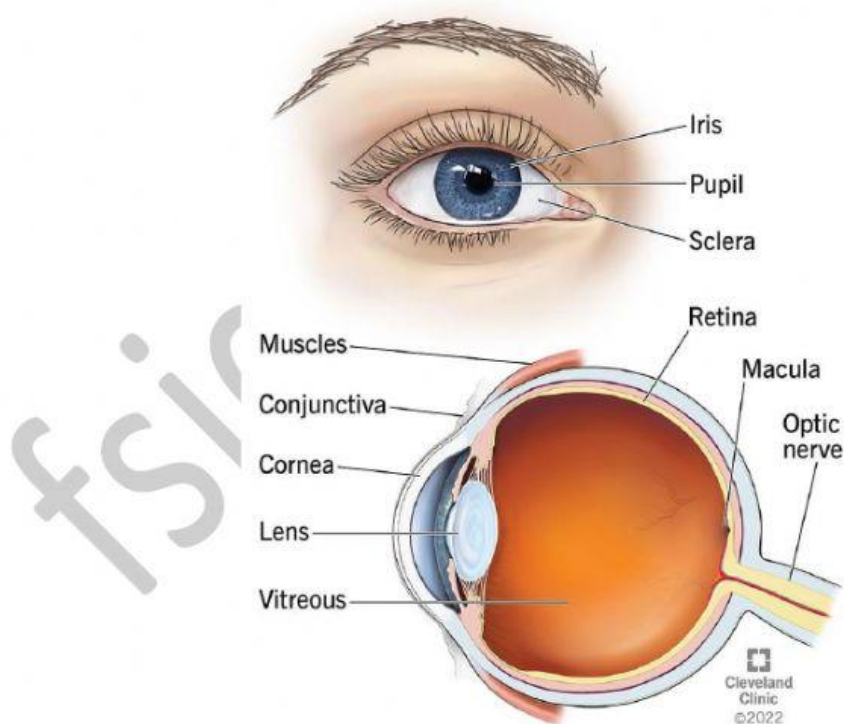
| | | | |
|----------------|------|-------------|--------|
| Ciliary muscle | Lens | Pupils | Retina |
| Cornea | Iris | Optic nerve | |

Light enters our eyes through our _____, the black dot in the middle of our eyes. The pupil is protected by a transparent layer called the _____.

The colored part around the pupil is called the _____. It controls how much light gets into our eyes. The light then travels through the _____, which focuses the image of the object. The _____ changes the shape of the lens to help it focus.

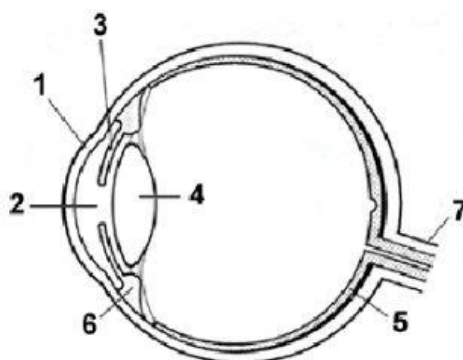
Light focused through the lens goes to a layer of tissue in the back of the eye called the _____. The signals collected there are sent to the _____, which transmits the image to the brain.

Eye anatomy



Created By: Chivas & Jordan Spivey

Part 2: Use the diagram of an eye below to drag and drop/write the correct eye part and function to their corresponding number.



| Eye part Number | Part Name | Function of Eye part |
|-----------------|-----------|----------------------|
| 1 | | |
| 2 | | |
| 3 | | |
| 4 | | |
| 5 | | |
| 6 | | |
| 7 | | |

Part Names:

| | | | |
|----------------|-------|-------------|--------|
| Lens | Iris | Retina | Cornea |
| Ciliary muscle | Pupil | Optic nerve | |

Functions:

| | |
|---|--|
| Transmits images and information to the brain | Contains cells that detect light |
| Outermost transparent layer of eye, begins focusing process | Opening to the inner eye, place where light enters the eye |
| Controls shape of lens | Controls the size of the pupil |
| Focuses image of object | |

Created By: Chivas & Jordan Spivey