



E5 U16: Where is the post office?



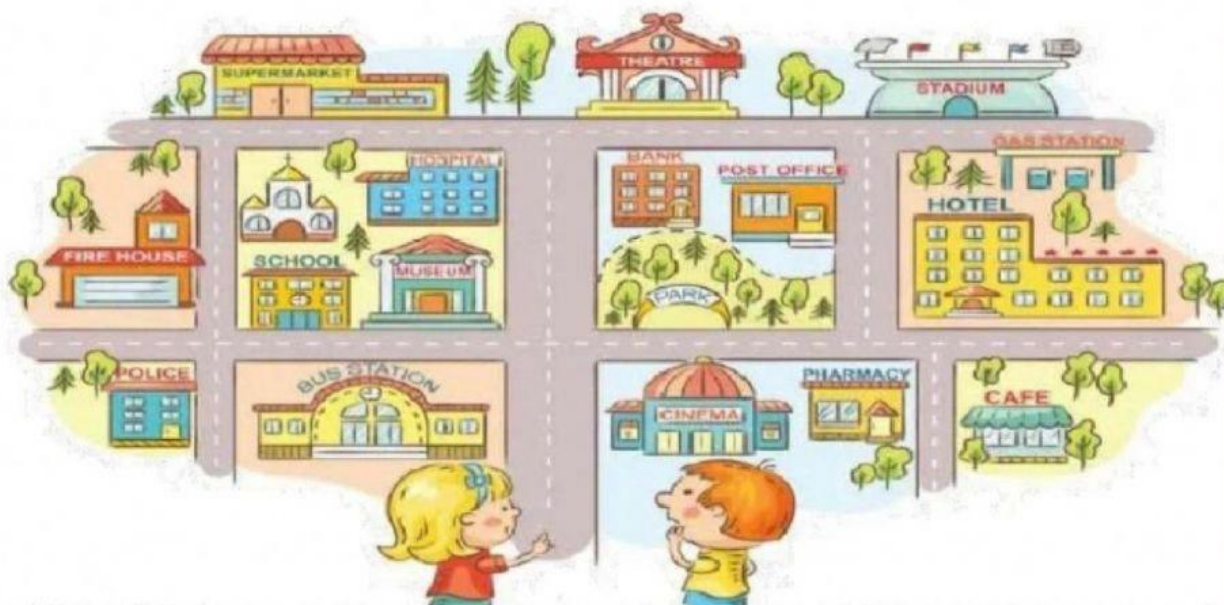
1. Look at the map, choose the correct answer

WHERE IS THE...?



Next to	In front of	Between

* Look at the map and choose the correct preposition to complete the conversation.



Boy: Excuse me, where is the cinema?

Girl: The cinema is pharmacy.

Boy: Is there a café in this town?

Girl: Yes, the café is the hotel.

Boy: And, where is the hotel?

Girl: The hotel is gas station.

Boy: Where is the post office?

Girl: The post office is bank.

Boy: Thank you.

Girl: You're welcome.





E5 U16: Where is the post office?



2. Look at the map, choose: there is / there are



1. a park in my town.
2. two schools in my town.
3. a police station in my town.
4. two supermarkets in my town.
5. a hospital in my town.
6. a restaurant in my town.
7. two toy shops in my town.

