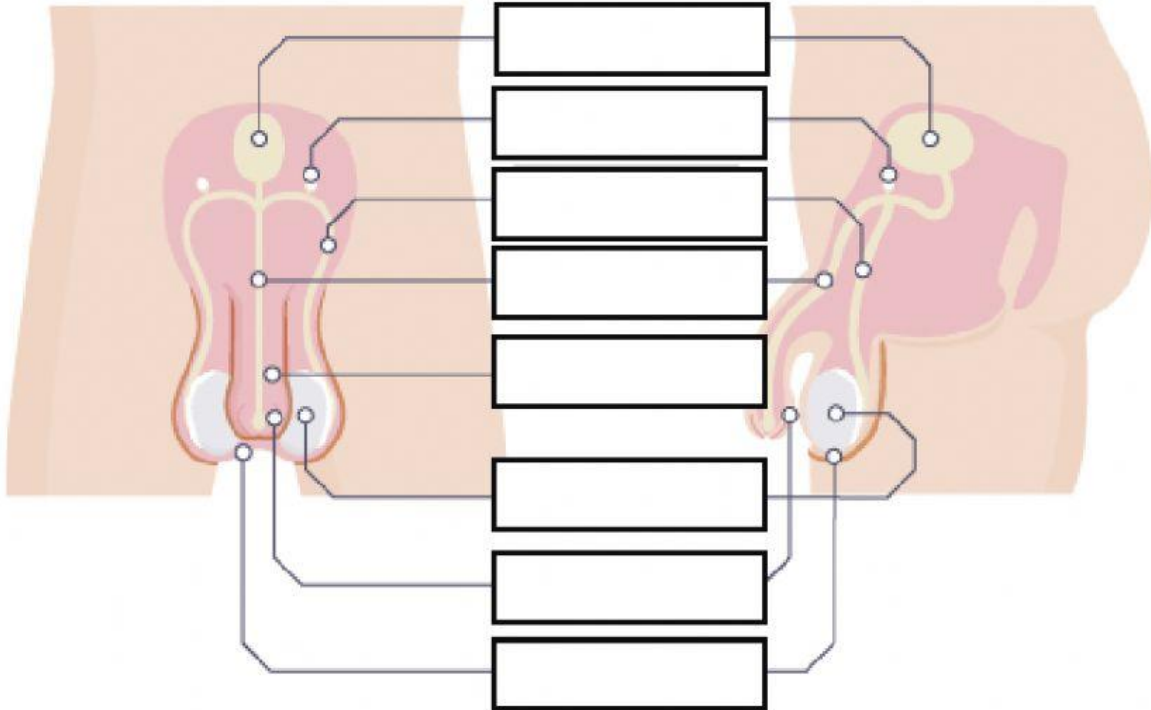


## Parts of the human reproductive system

1. Drag and drop the labels below the diagram into the correct boxes.

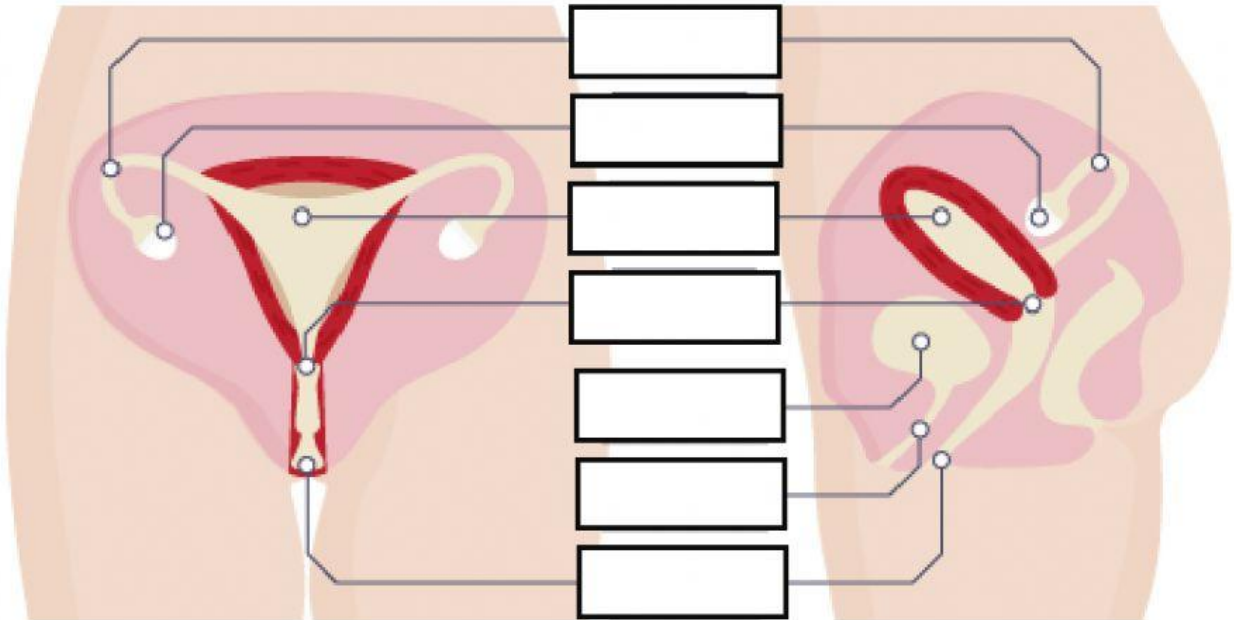


sperm duct	foreskin	urethra	bladder
scrotum	testis	penis	gland



*Scroll down for the next question!*

2. Drag and drop the labels below the diagram into the correct boxes.



cervix	bladder	uterus	oviduct
vagina	ovary	urethra	



*Scroll down for the next question!*

3. Connect the male parts to the function:

Part
Glands
Sperm Ducts
Urethra
Testes
Penis

Function
The tube inside the penis that can carry urine or semen.
Produces sperm and male sex hormones.
Passes urine and semen out of the body.
Produces fluids to provide sperm cells with nutrients.
A tube that transports sperm from testes to the penis.



*Scroll down for the last question!*

4. Connect the female parts to the function:

Part
Oviducts
Ovaries
Uterus
Cervix
Vagina

Function
Contain hundreds of undeveloped egg cells. Egg cells are released from here about once a month.
Ring of muscle at the lower end of the uterus which keeps the baby in place during pregnancy.
Muscular tube that leads from the cervix to the outside of the body.
Where eggs move through from the ovaries to the uterus when they become developed.
Where a baby develops until its birth.