



1. Which of these is an organelle in cells?

[Need a Hint?](#)



- A. ☐ lipid
- B. ☐ mitochondrion
- C. ☐ nucleic acid
- D. ☐ carbohydrate

2. Which of the following is unique to a prokaryotic cell?

[Need a Hint?](#)

- A. ☐ a nucleus
- B. ☐ endoplasmic reticulum
- C. ☐ mitochondria
- D. ☐ cytoplasm

3. What are the components of the cell membrane?

[Need a Hint?](#)

- A. ☐ lipids and proteins
- B. ☐ lipids and carbohydrates
- C. ☐ proteins and carbohydrates
- D. ☐ carbohydrates and nucleic acids

4. What is the liquid part of the cell inside the cell membrane called?

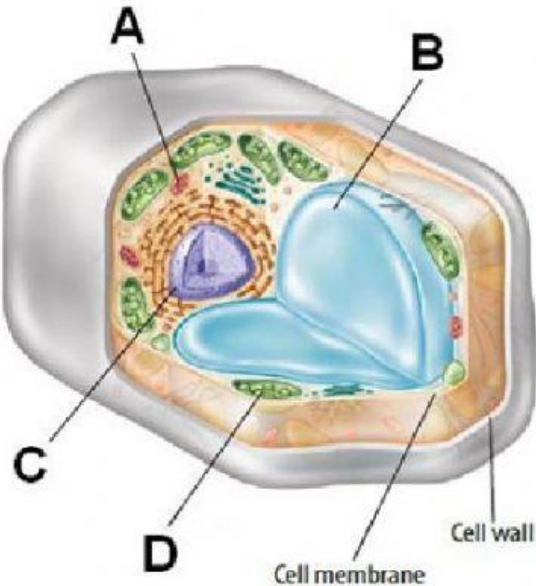
[Need a Hint?](#)

- A. ☐ vacuole
- B. ☐ chloroplast

- C. ☐ cytoplasm  
D. ☐ cytoskeleton

5. Which two organelles have similar functions?

[Need a Hint?](#)



- A. ☐ A and B  
B. ☐ B and C  
C. ☐ A and D  
D. ☐ C and D



This is the end of the test. When you have completed all the questions and reviewed your answers, press the button below to grade the test.

Grade the Test

Please read our [Terms of Use](#) and [Privacy Notice](#) before you explore our Web site. To report a technical problem with this Web site, please contact [Technical Support](#).



*The McGraw-Hill Companies*