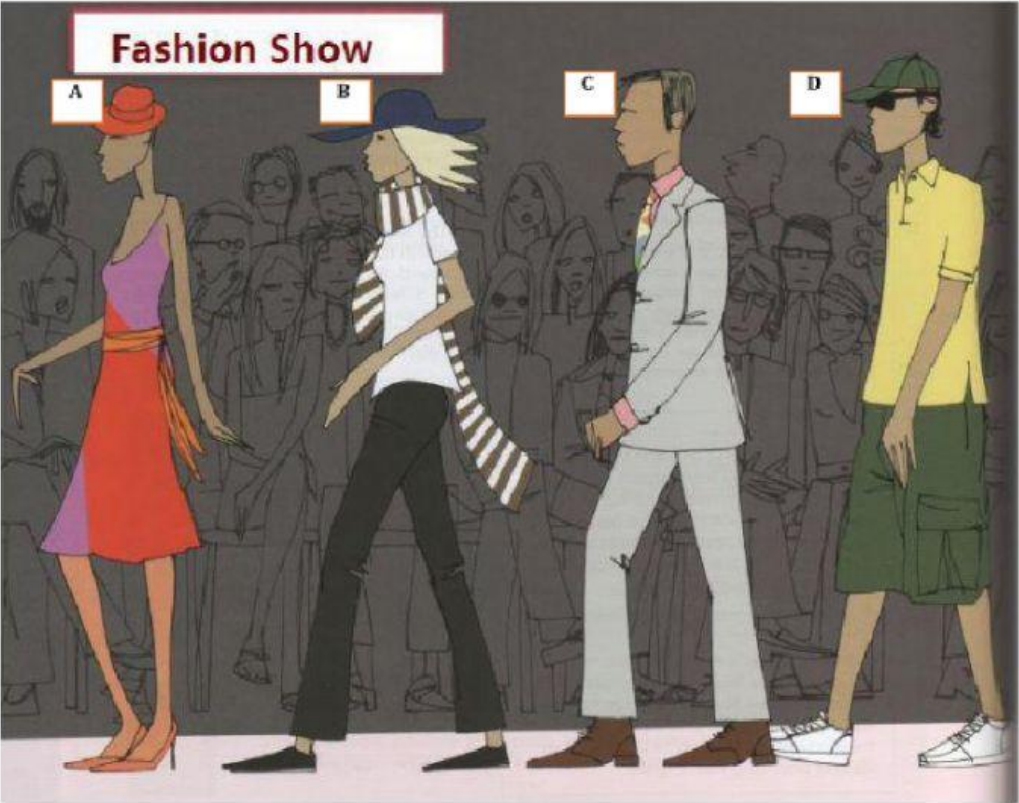


**Part 1 – Listening (15 Minutes)**

**A. Listen to some people in the audience. Decide which model each speaker is talking about. Write A, B, C or D in front of the number.**

**AUDIO**



- |    |     |
|----|-----|
| 1. | 7.  |
| 2. | 8.  |
| 3. | 9.  |
| 4. | 10. |
| 5. | 11. |
| 6. | 12. |

**B. Listen again and fill in the blanks**

**AUDIO**

1. Those \_\_\_\_\_ are too \_\_\_\_\_ for her.
2. That \_\_\_\_\_ is very \_\_\_\_\_.
3. Those leather \_\_\_\_\_ are extremely \_\_\_\_\_.
4. That's a \_\_\_\_\_ striped \_\_\_\_\_.
5. The \_\_\_\_\_ are enormous. They're very big and \_\_\_\_\_.
6. Those \_\_\_\_\_ look \_\_\_\_\_.
7. I love the \_\_\_\_\_ that the grey \_\_\_\_\_ is made of, but the colour's very dull.
8. The dark blue \_\_\_\_\_ is very \_\_\_\_\_.
9. He should take that \_\_\_\_\_ baseball \_\_\_\_\_ off.
10. The \_\_\_\_\_ dress looks fairly cool because of the \_\_\_\_\_ material.
11. What a horrible \_\_\_\_\_ on that silk \_\_\_\_\_. I prefer plain ties.
12. The colours are too \_\_\_\_\_ and the orange \_\_\_\_\_ doesn't match.

**Part 2 – Vocabulary, Reading and Grammar (20 minutes)**

**Read the following paragraphs and choose the correct answer.**

Clothing is something we all should wear in order to fit in to society. The act of wearing clothing is a choice in some indigenous societies while in a more modern culture you could find yourself in trouble with the police if you choose not to wear clothes. Clothes are easily accessible and can be bought in most high street shops. Supermarkets are also beginning to sell clothes. Clothes are for keeping people warm or serving as protection from the strong burning sun. Certain items of clothing can be expensive, especially if it is made by a well-known brand or is a particular design. While clothing is affordable for most

people, the price usually depends on the quality of the material used to make the item and its brand name. In most countries clothing is taxed, while food is not. This is probably because clothing can be considered as a luxury item, especially if it is very good quality.

The type of clothing that is worn usually depends on the occasion. People who attend a wedding usually wear formal clothes. Men often wear suits and women wear dresses. Formal and smart clothing is often worn in times of celebration. People often wear different clothing at work. Some jobs require people to wear a special uniform which should be worn by all employees. A pilot, doctor or flight attendant may be required to wear a uniform so that all the staff can be easily recognized. Other jobs are less strict and may allow people to wear casual clothes. Construction workers are usually asked to wear protective clothing, especially when the site is considered highly dangerous.

People often choose to wear comfortable clothing inside their own home. This choice of clothing may be very different to the clothing they would normally wear outside. Some people even stay in their bedclothes all day on the weekend when they plan to relax and not go anywhere. People often wear clothing which matches their current state of health or their age. Pregnant women are likely to wear baggy clothes, while youths often wear tighter clothing to show their figure. Younger females often wear high heeled shoes while elderly people tend to wear more comfortable shoes which will allow them to walk with ease.

**A. Find the synonym of the definition below in the text.**

1. Able to be reached or easily obtained. (paragraph 1) \_\_\_\_\_
2. Not expensive. (paragraph 1) \_\_\_\_\_
3. To need something or make something necessary. (paragraph 2) \_\_\_\_\_
4. Strongly limiting someone's freedom to behave as they wish. (paragraph 2) \_\_\_\_\_
5. Hanging loosely because of being too big. (paragraph 3) \_\_\_\_\_

**B. Choose A, B, C or D.**

1. When can items of clothing be expensive?
  - A. When they are from supermarket.
  - B. When they are taxed too much.
  - C. When it is a well-known brand or design.
  - D. When they are on sale.
2. What kind of job requires workers to wear protective clothing?
  - A. Pilots
  - B. Construction workers
  - C. Doctors
  - D. Flight attendant
3. How do some youths usually like to wear their clothes?
  - A. Baggy
  - B. Tight
  - C. Short
  - D. Long
4. What type of clothing is worn in times of celebration?
  - A. Formal
  - B. Casual
  - C. Protective
  - D. Bedclothes
5. Who is more likely to wear baggy clothing?
  - A. Youths
  - B. Workers
  - C. Pregnant ladies
  - D. Elderly people

**C. Complete the dialogue with the words from the box.**



large	try on	looking	fit
changing		T-shirt	made
suit		cards	size

- Shop assistant : Can I help you?
- Customer : I'm just (1)\_\_\_\_\_, thank you.
- Shop assistant : Are you looking for anything in particular?
- Customer : Yes, I'm looking for a T-shirt.
- Shop assistant : What(2) \_\_\_\_\_are you?
- Customer : I'm a(3) \_\_\_\_\_.
- Shop assistant : Here are our (4) \_\_\_\_\_. These ones are large.
- Customer : Can I (5)\_\_\_\_\_ the blue T-shirt?
- Shop assistant : Sure. The (6) \_\_\_\_\_ room is over there.
- Customer : This one doesn' (7) \_\_\_\_\_ me. It's too big.
- Shop assistant : Then you can try these T-shirts, they're smaller.
- Customer : OK, I'll try on the green one.
- Shop assistant : This T-shirt really (8)\_\_\_\_\_ you! You look good in this colour.
- Customer : Thanks! Could you tell me how much it is?
- Shop assistant : It's \$60.
- Customer : Oh, so expensive? Can you make it \$50?
- Shop assistant : But it's (9) \_\_\_\_\_ in Paris, real cotton. Sorry, no discounts.
- Customer : Ok, I like it. Do you take (10) \_\_\_\_\_?
- Shop assistant : Yes, sure.

**D. Answer the questions.**

1. How much is the T-shirt?
2. Which T-shirt does the man choose?
3. Why is it expensive?
4. Did the man get the discount?
5. Did he pay in cash?

**Part 3 – Writing (15 Minutes)**

*You should write at least 75 words.*

**Write short paragraphs about the item of clothing you would never wear and the reasons why you wouldn't wear it.**