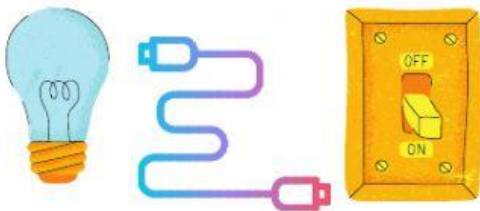


# Put in order the steps of the experiment of the electrical circuit.

**Connect a cable to the bottom of the light bulb and connect it to the switch.**



## EXPERIMENT

**Connect one cable to the battery.**



## QUESTIONS

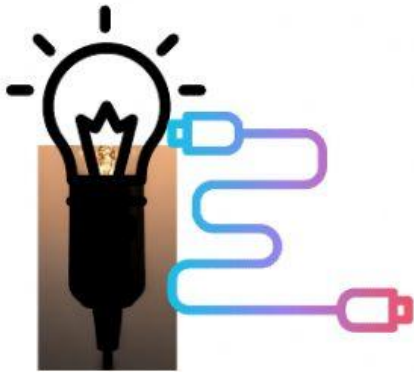
- **How can you connect all the parts?**
- **How can you turn the light bulb on?**



**Screw the light bulb in the bulb holder.**



**Connect a cable to the bulb holder.**



## OBSERVATIONS

**We have many materials:**

- A battery
- A light bulb
- A holder
- Scissors
- Three cables



**Turn the light bulb on and off.**



**Use a cable to connect the switch to the battery.**

