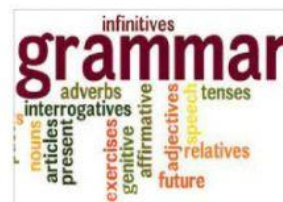
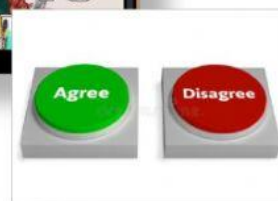
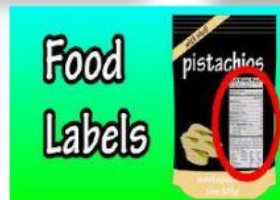


LEMBAR KERJA PESERTA DIDIK (LKPD) DIGITAL
BAHASA INGGRIS
KELAS 9



IDENTITAS SISWA

NAMA :

KELAS :

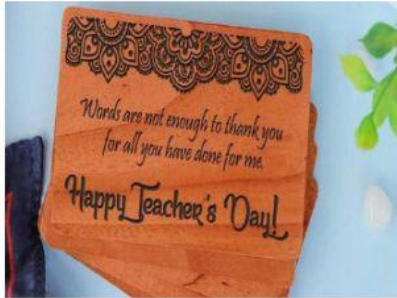
MTsN 2 KOTA PEKANBARU
TAHUN PELAJARAN 2022 /2023

ANSWER THE QUESTION BELOW!



✚ Write the name of the cards below based on the pictures !

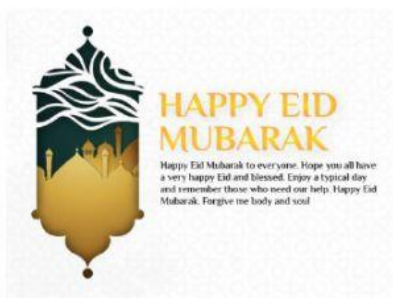
1.



2.



3.





✚ Klik the correct answer to complete the sentences!

1. I went to Sumatera ... my brother

to see

for seeing

2. I will go by train ... I can take more bags

for

to

So that

3. She came here ... study English well

So that

to

In order to

4. Time is more important than money

Agree

Disagree

5. Handphone is the most advance technology in the world.

Agree

Disagree

6. Fried chicken is the best food in the world

Agree

Disagree

✚ Choose the correct answer a, b, c or d!

MILK CALCIUM		
Dietary Supplement		
600 mg 100 Soft gels		
Supplement Facts		
Serving size : 1 soft gel		
Amount per 1 soft gel	% Daily Value*	
Vitamin D	200 IU	50
Calcium (from milk)	600 mg	60
Zinc	15 mg	*
*Daily value has not been established		
Other ingredients: Gelatin, Glycerin, Purified Water		
Directions: As a dietary supplement, take one soft gel for adults daily.		
Manufactured for:	EXP 04 27 22	
NU-HEALTH PRODUCTS CO.	LOT 2 75 61	
Walnut, CA 91789		
Made in U.S.A.		



1. The label is telling us about ... of a dietary supplement.
 - A. the information
 - B. the usage
 - C. the materials
 - D. the benefits

2. When would it be best to consume the product?
 - A. Before April 27th , 2022
 - B. After April 4th, 2022
 - C. During April 4th, 2022.
 - D. On April 4th, 2022

3. How many soft gels does someone take every day?
 - A. 15 mg
 - B. 1 gel.
 - C. 200 IU.
 - D. 600 mg.

4. "Daily value has not been established." (Line 10)
What is the meaning of the word "established"?
 - A. Ordered.
 - B. Carried
 - C. Determined.
 - D. Helped



- ✚ Complete the following text with the correct answer in the box! (Lengkapi text berikut ini dengan jawaban yang benar dengan menarik jawaban yang benar ke dalam kolom yang kosong)!

How to Make Sweet Hot Tea

Before you make a glass of sweet hot tea, make sure you have already prepared about these one:

-
- Hot water
- Sugar
- A glass



To begin make a glass of sweet hot tea, you may look up too the instruction below:

1. water until it is boiled.
2. Pick a glass and put a bag of tea.
3. Add some
4. When the water is boiled, it into the
5. A glass of sweet hot tea is ready to serve.

Tea

sugar

pour

Boil

glass

- ✚ Choose TRUE or FALSE based on the sentences below!

TRUE

FALSE

1. Cindy was sweeping the floor at 7.00 p.m last night

2. Will be you baking a delicious cake at this time tomorrow?

3. I have combed my hair yet

4. She have slept for a week

= GOOD LUCK =

