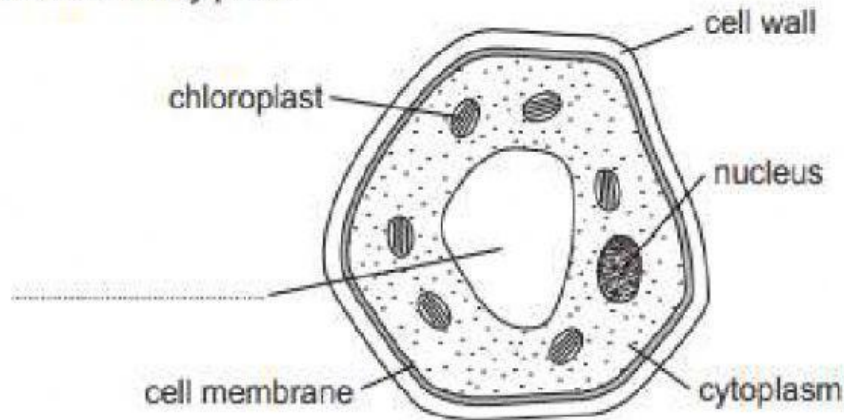


7 Plant cells contain many parts.



- (a) One part of this cell has not been named.  
Add this name to the diagram.

[1]

- (b) Chloroplasts are not found in all plant cells.

- (i) Name a plant cell that has chloroplasts.

[1]

- (ii) Name a plant cell that does **not** have chloroplasts.

[1]

- (c) Two parts labelled on the diagram are **not** found in any animal cells.

Which **two** parts?

1

.....

2

.....

[1]

## Key Stage 3 Biology

**Describe what the following parts of a microscope do:**

**a**

lens \_\_\_\_\_

stage \_\_\_\_\_

**Match the organelle with its function.**

**b**

nucleus

Allows substances in and out of the cell.

cell wall

Where respiration occurs.

cell membrane

Controls the cells.

mitochondria

Strengthens the cell.

**Put the following in order, starting with the smallest:**

**c**

tissue, organism, organs, organ systems, cells.

1. \_\_\_\_\_

2. \_\_\_\_\_

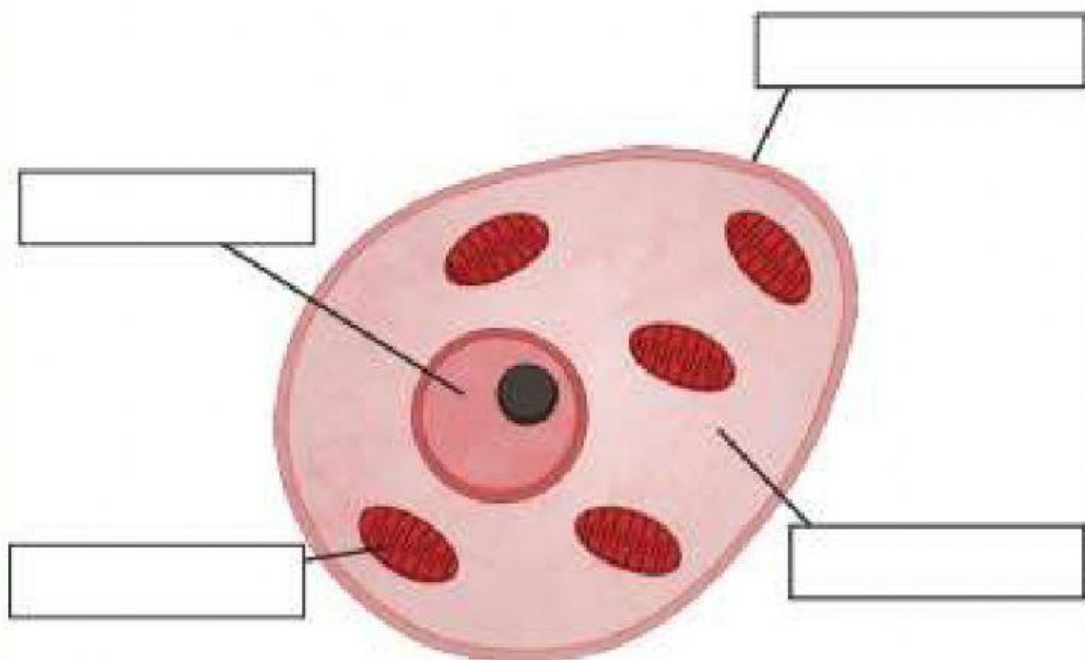
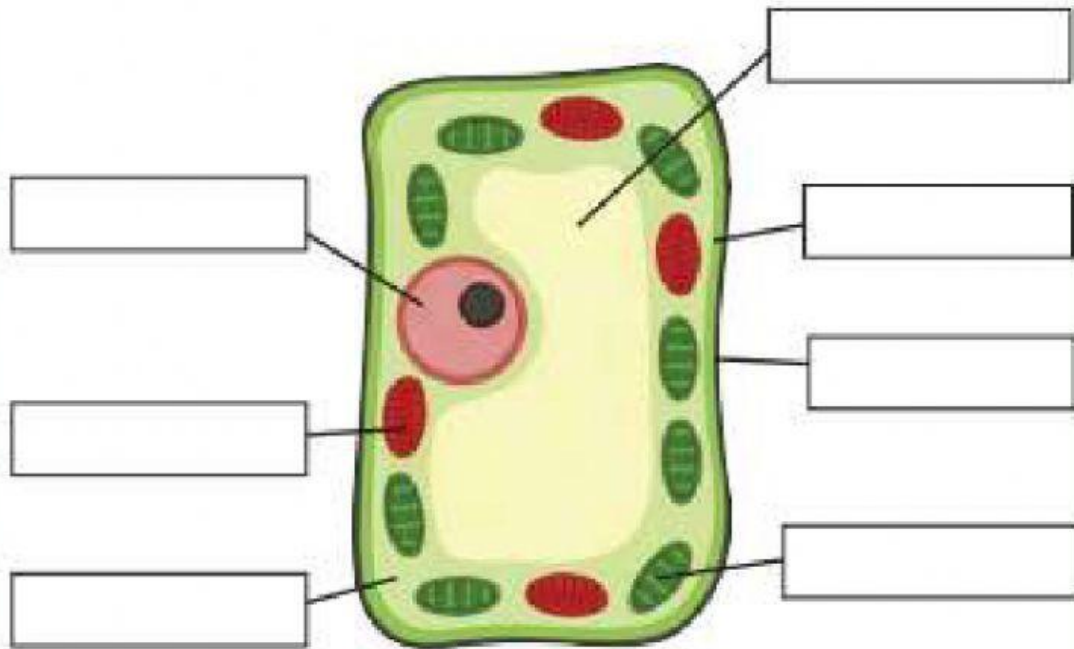
3. \_\_\_\_\_

4. \_\_\_\_\_

5. \_\_\_\_\_

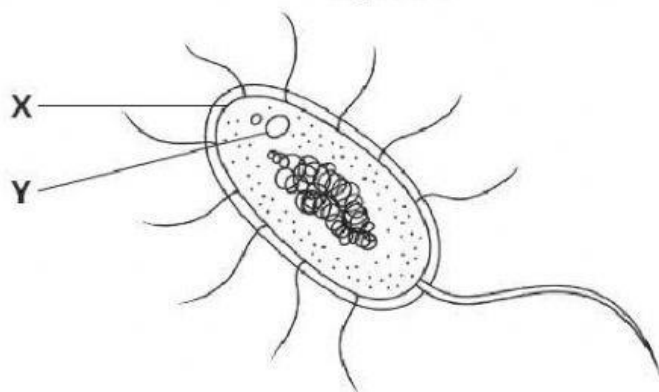
Label the diagrams of a plant and animal cell.

e



**Figure 1** shows a bacterial cell.

**Figure 1**



What is the name of the structure labelled **X** that controls the movement of substances into and out of the cell?

[1 mark]

Tick **one** box.

cell membrane

☐

cytoplasm

☐

DNA

☐

flagellum

☐

Name and give the function of the structure labelled **Y**.

[2 marks]

Name \_\_\_\_\_

Function \_\_\_\_\_

\_\_\_\_\_