

UNIT 2: WHY ARE TOWNS GREAT?

1. Drag and drop the words to complete the sentences.



next to

above

opposite

in front of

behind

between

The plane is

The clothes shop is

The bus is

The museum is

The library is

The cars are

the museum.

the restaurant and the park.

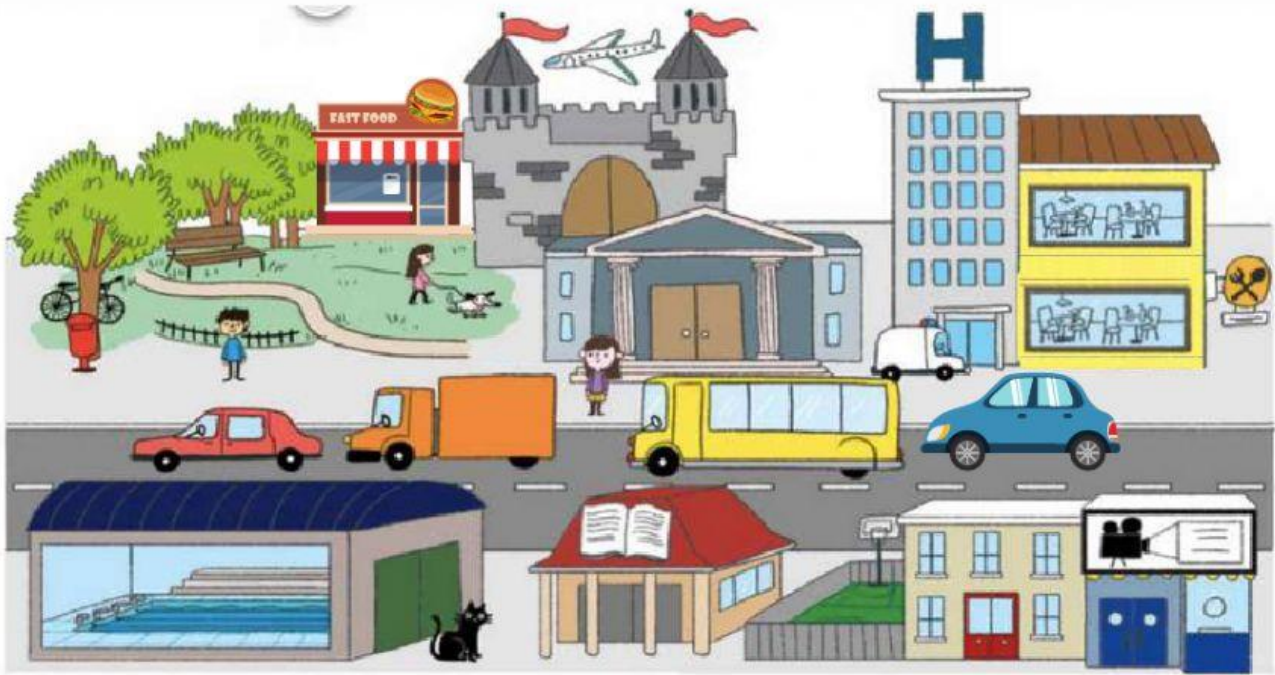
the castle.

the swimming pool.

the toy shop

the cinema.

3. Look at the picture and answer the questions.



1. Where's the cat?

It's between the hospital and the museum.

It's opposite the cinema.

It's next to the swimming pool.

3. Where's the library?

It's opposite the museum.

It's between the cinema and the shop.

It's behind the school.

5. Where's the hospital?

It's opposite the swimming pool.

It's between the restaurant and the museum.

It's next to the cinema.

7. Where's the lorry?

It's in front of the hospital.

It's behind the library.

It's between the red car and the bus.

2. Where's the bike?

It's in front of the lorry.

It's behind the tree.

It's above the tree.

4. Where's the bin?

It's behind the red car.

It's next to the cat.

It's in front of the tree.

6. Where's the cinema?

It's next to the school.

It's behind the library.

It's in front of the station.

8. Where's the plane?

It's opposite the castle.

It's behind the castle.

It's above the castle.