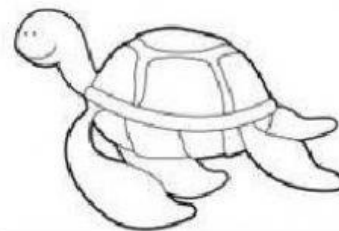
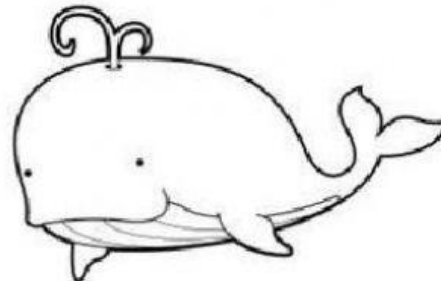
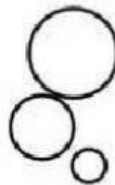
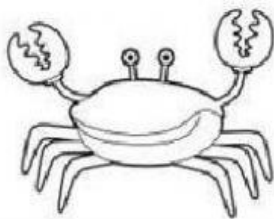
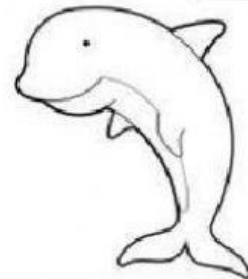
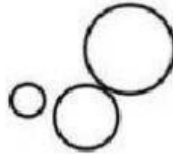
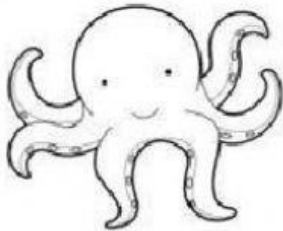


1, WRITE THE NAME OF THE ANIMALS:



TURTLE

DOLPHIN

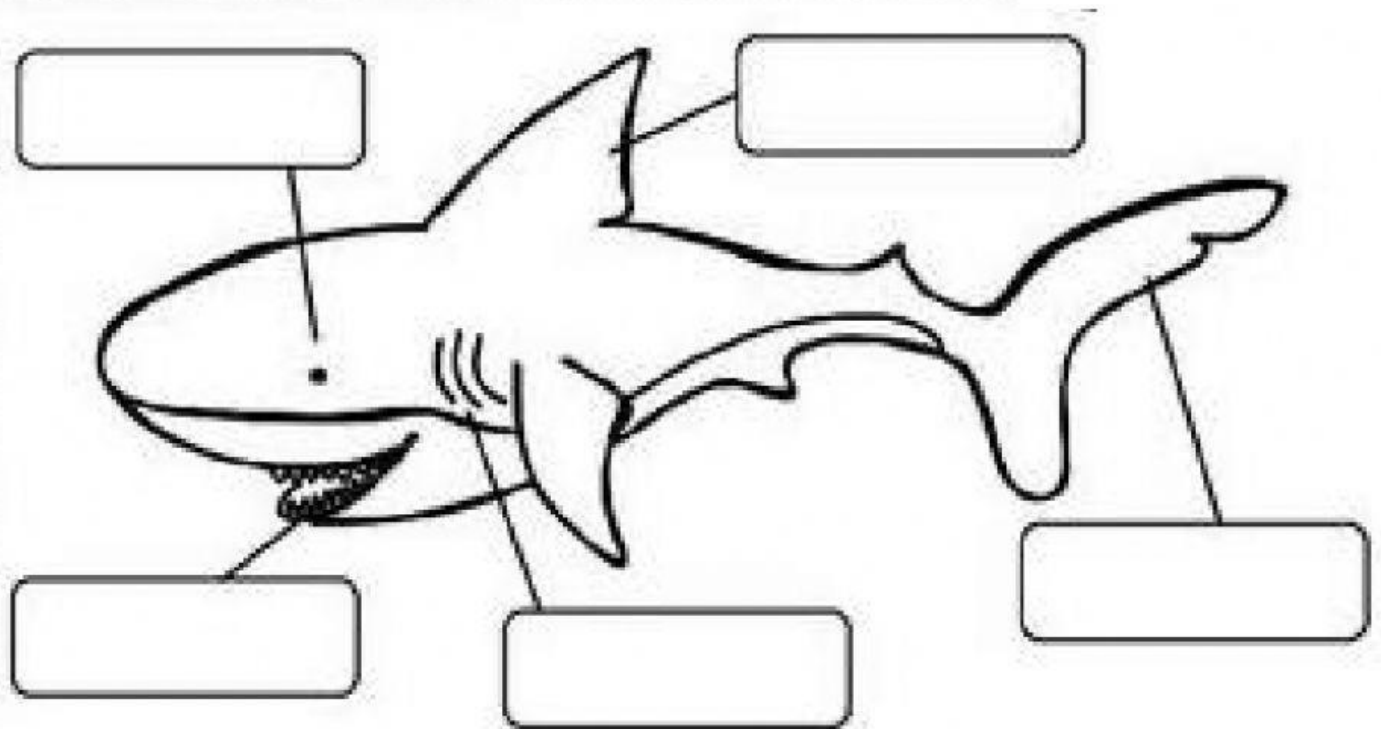
WHALE

SEAHORSE

OCTOPUS

CRAB

2, COMPLETE:



TEETH

FIN

EYE

TAIL

GILLS

3, CLASSIFY:

HAVE BABIES

DORSAL FIN

TAIL

BREATHE AIR

EAT PLANTS

GILLS

TEETH

EYES

LIVE ALONE

ACTIONS

**BODY
PARTS**

4. CHOOSE THE CORRECT OPTION:



MY FAVOURITE SEA ANIMAL ARE .

THEY ARE .

THEY HAVE TEETH, , DORSAL FIN
AND A TAIL.

THEY ALONE.

THEY BABIES.

THEY DON'T AIR.

WHAT IS FAVOURITE SEA ANIMAL?