

Example:

0

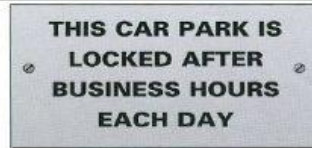


- A Do not leave your bicycle touching the window.
- B Do not ride your bicycle in this area.
- C Broken glass may damage your bicycle tyres.

Example answer:

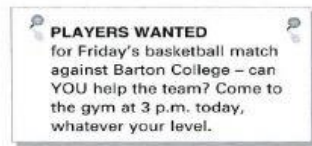
Part 1			
	A	B	C
0	<input checked="" type="checkbox"/>	<input type="checkbox"/>	<input type="checkbox"/>

2



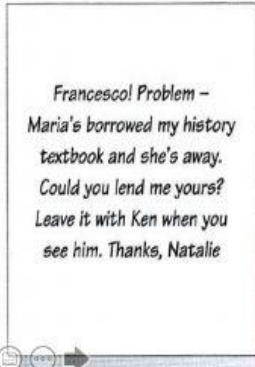
- A Users must lock the car park after leaving.
- B People can park here while they are at work.
- C This car park is for employees only.

3



- A The basketball team only wants to see experienced players.
- B There aren't enough team members available on Friday.
- C The Barton College team will visit the gym later today..

1



Whose textbook does Natalie want to borrow?

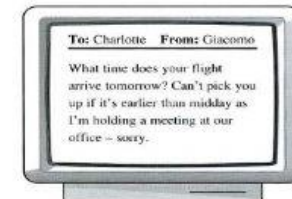
- A Ken's
- B Maria's
- C Francesco's

4



- A All Sunday evening tickets are already sold.
- B You must book tickets for Sunday in advance.
- C A ticket is not necessary for Sunday evening.

5



- A Giacomo will be able to see Charlotte early tomorrow morning.
- B Charlotte needs to arrive in time for Giacomo's meeting tomorrow.
- C Giacomo can collect Charlotte from the airport tomorrow afternoon.