

PEOPLE

1. CHOOSE the correct answer



2. LOOK and write HE/SHE



Is ☐ thin?



Is ☐ fast?



Is ☐ tall?



Is ☐ invisible?



Is ☐ strong?



Is ☐ short?



Are they clever?



Is ☐ scary?

3. ANSWER the questions

Yes, he/she is /

No, he/she isn't



Is he invisible?



Is he fast?



Is she scary?



Is he thin?



Is she strong?



Is she short?



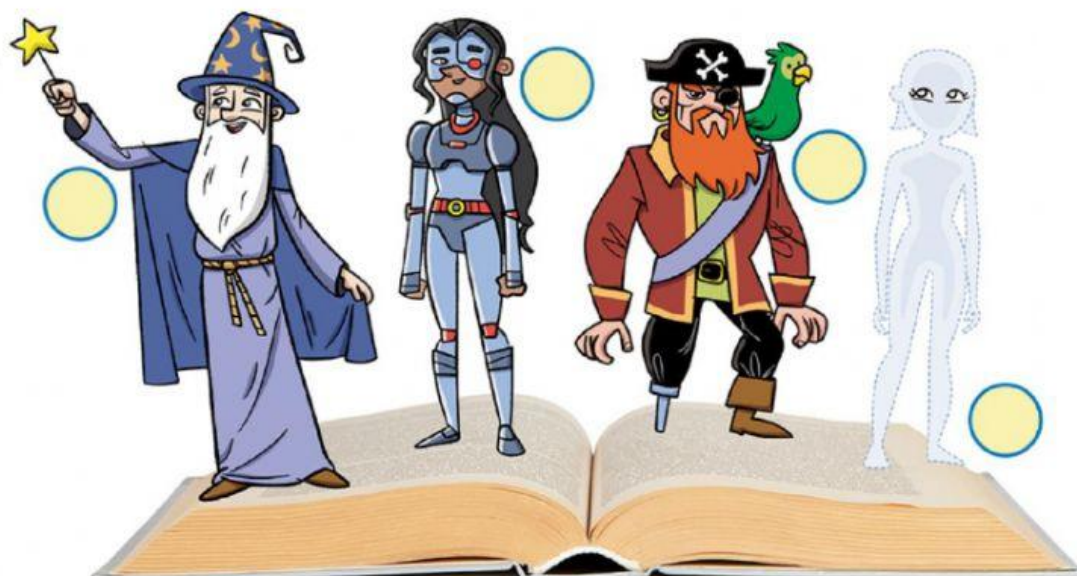
Are they clever?

Yes, they are



Is he tall?

4. LISTEN and NUMBER



5. READ the dialogues and guess the superhero



1



2



3



4

Jasmin: What's your favourite superhero?

Mike: It's a girl

Jasmin: Is she fast?

Mike: No, she isn't

Jasmin: She's

Ryan: What's your favourite superhero?

Carla: It's a boy

Ryan: Is he invisible?

Carla: No, he isn't

Ryan: He's

Mike: What's your favourite superhero?

Ryan: It's a boy

Mike: Is he scary?

Carla: No, he isn't

Ryan: He's

Carla: What's your favourite superhero?

Jasmin: It's a girl

Carla: Is she clever?

Jasmin: No, she isn't

Carl: She's