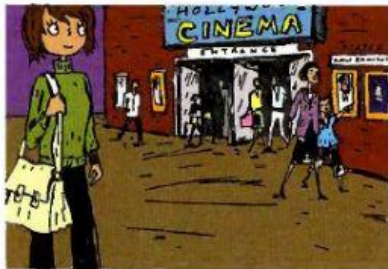
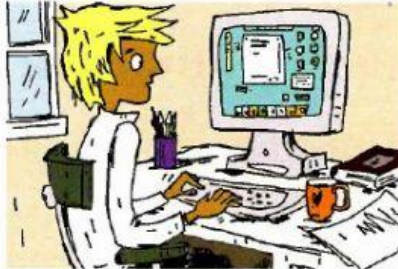


## Past Simple – To Be – Worksheet

1 Look at the pictures and complete the questions and answers.



Helen: at the cinema



Nick: at work



Tom and Dan: at home



Liz and Jane: at school

- 1 ..... was Helen ..... at home yesterday?  
Helen ..... wasn't at home ..... She ..... was at the cinema .....
- 2 ..... at school yesterday?  
Tom and Dan .....  
They .....
- 3 ..... at home yesterday?  
Nick ..... He .....
- 4 ..... at the cinema yesterday?  
Liz and Jane .....  
They .....

2 Use the prompts to make questions and negative sentences.

- 1 Jim / at home / last night Was Jim at home last night ..... ?
- 2 you / at school / on Monday ..... ?
- 3 the cinema / open / on Sunday ..... ?
- 4 all your friends / at your party ..... ?
- 5 Kevin and Mel / at my party. Kevin and Mel weren't at my party .....
- 6 Nick / in class yesterday .....
- 7 It / warm yesterday .....
- 8 We / at the match yesterday .....