



THE SKELETON

The skeleton is made up of _____.

There are three types of bones: _____ bones,
_____ bones and _____ bones

Such as femur or humerus

Such as vertebrae

Such as ribs or pelvis

sternum

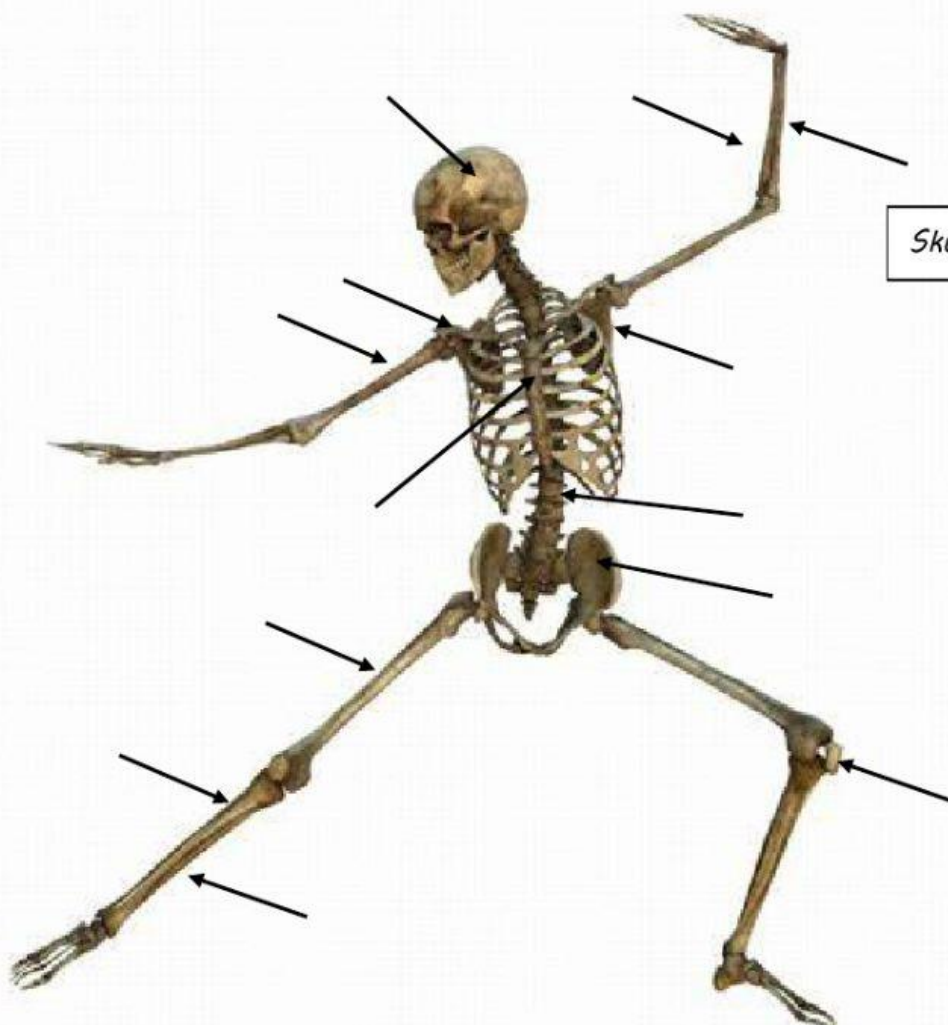
radius

tibia

humerus

scapula

spine



fibula

Skull or cranium

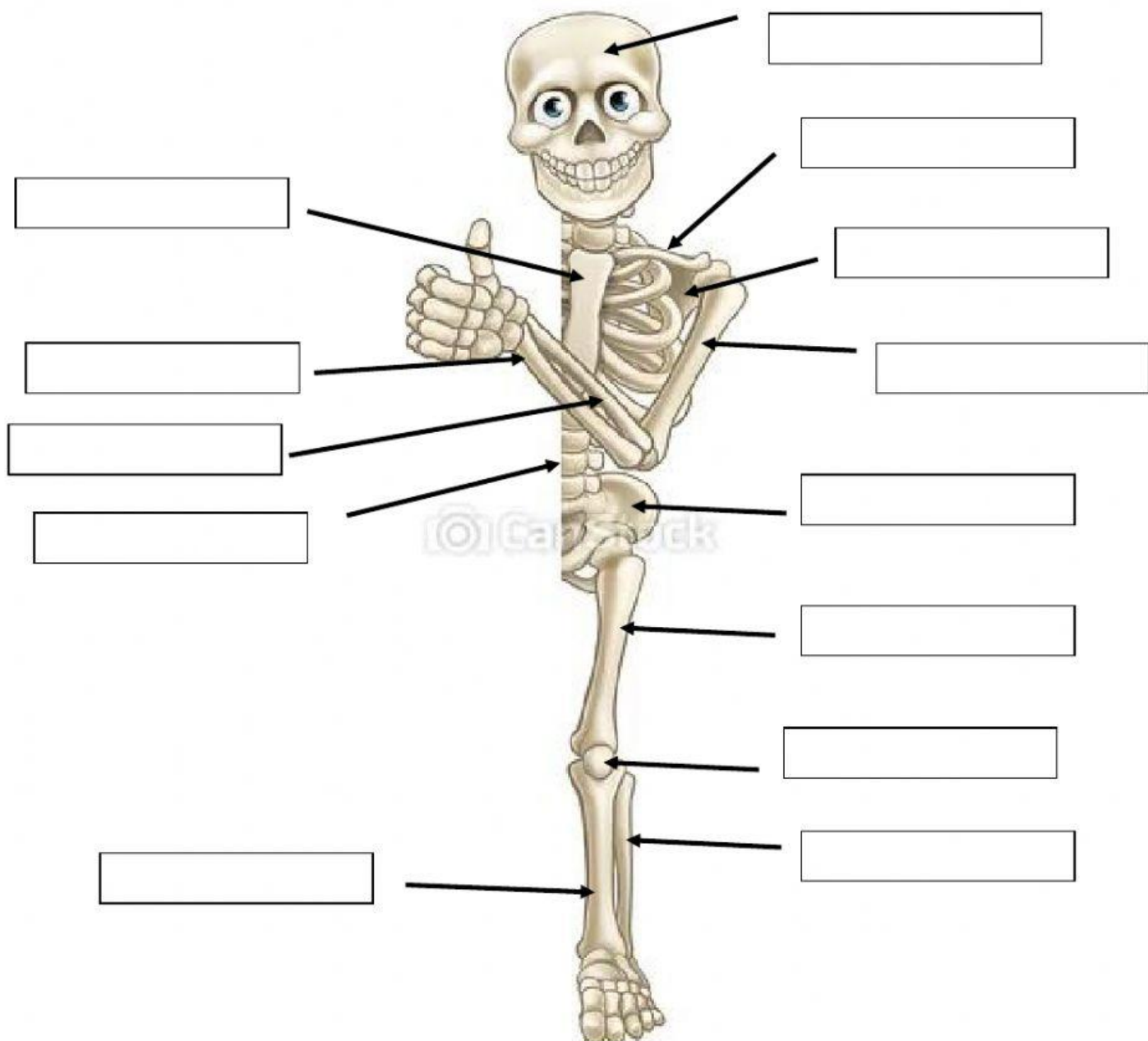
patella

clavicle

pelvis

femur

ulna



Our bones are connected at the joints by strong elastic tissue called _____.

The ends of the bones at the joints are covered in strong, flexible tissue called _____.

There are three types of joints: _____ joints, _____ joints and _____ joints.

Do not move. The parts of the skull are connected by this joints.

Most of the ones we have. Are important for movement.

Only allow a small amount of movement, such as the vertebrae in the spine.