

LATIHAN SOAL UP BAHASA INGGRIS 1

1. Project-based Learning is believed to be beneficial for students to develop the following skills, EXCEPT the . . . skill.
A. intrapersonal
B. problem-solving
C. critical thinking
D. communicative
2. Scholars believe that . . . is appropriate theoretical framework to support the classroom implementation of Project-based Learning
A. behaviorism
B. cognitivism
C. humanism
D. social constructivism
3. The basic idea of constructivism is that knowledge must be
A. transferred by teacher to students
B. constructed by the learner
C. mastered through various drills
D. be supplied by the teacher
4. According to constructivist theory, the learning process has the following features, EXCEPT...
A. teacher pours the information in the passive students' minds
B. students link new knowledge with the previous knowledge
C. students interact with peers and the teacher
D. students use their individual learning style.
5. Ivan is an outstanding student who gets an award / prize. This makes him more diligent to learn. The teacher prioritizes students-centered learning. She presented the materials in the form of small units so that students only need to provide a specific response. She gave feedback to the students' work or response so that students immediately know the results. The teacher's steps in teaching are based on the following theory:
A. Behaviorism
B. Constructivism
C. Humanism.
D. Gestalt
6. To avoid subjective judgments and to facilitate teachers in assessing the achievements of students, in the assessment of the psychomotor domain the teacher should use...
A. multiple choice questions
B. matter of objective description
C. criteria
D. performance test
7. Which of the following statements is NOT in line with the constructivist model in teaching?
A. Prepare real objects to be used by students to learn.
B. Give students the task of memorizing certain concepts .
C. Familiarize students to think in their own way.
D. Teach students to interact with each other.

8. What is not included in the pedagogic competence for teachers is
- A. pay attention to cognitive development, utilize personality principles, identify potential students
 - B. apply learning theory, determine learning strategies
 - C. Understand teaching materials in the curriculum, material, and other scientific concepts
 - D. Design and carry out evaluations, analyze evaluation results, utilize assessment results to improve learning programs
9. In carrying out learning, teachers use technology and information, formations.
- This activity reflects the following competency:
- A. Pedagogic
 - B. personality
 - C. Social
 - D. Professional
10. The following statement that explains the meaning of cognitive terms is... ..
- A. the ability to communicate
 - B. the ability to solve problems
 - C. the ability to interact
 - D. the ability to integrate
11. The ability to think and to operate logic rules but still related to concrete objects is a characteristic of the ability of which of the following age?
- A. 0-2 years
 - B. 2-7 years
 - C. 7 - 11/12 years
 - D. 11/12 / - 14/15 years
12. This theory views learning as a result of the formation of a relationship between external stimuli (stimulus) and the response of students (response) that can be observed. The more frequent the relationship (bond) between stimuli and replies occur, the stronger the relationship between them (law of exercise). The learning theory in question is ...
- A. Behaviorism
 - B. Humanism
 - C. Cybernetics
 - D. Constructivism
13. According to this theory, the role of the teacher in learning is as a facilitator, motivator, and provides awareness about the meaning of life in students. This learning theory seeks to understand learning behavior from the point of view of the culprit not from the viewer's point of view. This learning theory is ...
- A. Humanistic
 - B. Constructivism
 - C. cognitivism
 - D. Nativism

14. The opinion which states that new knowledge or experience can be related to the old knowledge that already exists in one's cognitive structure is based onlearning theory:

- A. Behaviorism
- B. Constructivism
- C. Cognitivism
- D. Sibernatic

15. Before starting the teaching and learning process in the classroom, Mrs. Lily asked students to observe a phenomenon first. Then students are asked to record the problems that arise. After that, students are stimulated to think critically in solving existing problems. Meanwhile, Mrs. Lily directed students to ask questions, prove assumptions, and listen to opinions that were different from them.

The activities carried out by Mrs. Lily signaled the implementation of the learning model

- A. inquiry learning
- B. problem based learning
- C. Project based learning
- D. Discovery learning

16. Mr. Andi and his students plan a collaborative activity so that students feel are responsible for the activities that have been planned together. In the planning it was discussed about the rules of the game, supporting activities, tools and materials that can be accessed, ways and steps of work to complete the plan for collaborative activities.

The learning management model practiced by Mr. Andi reflects the principle of the model

- A. Problem solving learning
- B. Problem based learning
- C. Project based learning
- D. Discovery learning

17. When a teacher teaches using the following procedures:

- 1) Student orientation to problems
- 2) Organizing students in learning
- 3) Guiding student investigations independently or in groups
- 4) Developing and presenting the work
- 5) Analyzing and evaluating the problem solving process

These learning phases are a model of...

- A. Discovery Learning
- B. Project Based Learning
- C. Problem solving learning
- D, Inquiry Based Learning

18. One of the teacher's efforts in implementing learning improvement measures that have been designed through Classroom Action Research, among others is

- A. the teacher believes there is a problem in learning that requires improvement
- B. the teacher reevaluates the design, overcomes existing weaknesses
- C. the teacher designed the training effort to work on the questions to prepare for the National Examination
- D. The teacher introspects the weaknesses of the teacher aspect

19. The steps of conducting classroom action research are:
- A. observation → reflection → planning → execution of actions
 - B. reflection → planning → action execution → observation
 - C. planning → observation → action execution → reflection
 - D. planning → action implementation → observation → reflection
20. Which is best described as the formulation of Classroom Action Research problems?
- A. Can the use of role playing increase the activeness of grade XI students of SMAN 2 Batam?
 - B. How is the implementation of scientific approach in teaching English to the tenth grade of SMP 2 Surakarta?
 - C. Why do Sidoarjo 2 State High School students always win in various national competitions?
 - D. How to use projects that come from the environment around the school?
21. The following measures can be used to identify students' prior language proficiency, EXCEPT:
- A. students' rapport
 - B. post test
 - C. interview
 - D. questionnaire
22. Which of the following statements describe a kinesthetic learner?
- A. unable to sit down for long period of time
 - B. unable to memorize by listening only
 - C. unable to write neatly
 - D. unable to read silently
23. Which of the following strategies can assist a visual learner?
- A. using song
 - B. using radio news broadcast
 - C. using role play
 - D. using power point presentation
24. Which of the following strategies can assist an auditorial learner?
- A. using ads in a newspaper
 - B. using treasure hunt game
 - C. using story telling
 - D. using photos
25. Which of the following strategies implement constructivism learning theory?
- A. teacher uses lecturing method to deliver the material
 - B. teacher uses textbook most of the time
 - C. students are required to do the homework in worksheet everyday
 - D. teacher offers variety of sources to the students to search for information

TEXT 1

Manic depression is another psychiatric illness that mainly affects the mood. A patient suffering from this disease will alternate between periods of manic excitement and extreme depression, with or without relatively normal periods in between. The changes in mood suffered by a manic depressive patient go far beyond the day-to-day mood changes experienced by the general population. In the period of manic excitement, the mood elevation can become so intense

that **it** can result in extended insomnia, extreme irritability, and heightened aggressiveness. In the period of depression, which may last for several weeks or months, a patient experiences feelings of general fatigue, uselessness, and hopelessness and, in serious cases, may contemplate suicide.

26. The paragraph preceding this passage most probably discusses...
- A. when manic depression develops
 - B. a different type of mental disease
 - C. how moods are determined
 - D. how manic depression can result in suicide
27. The topic of this passage is
- A. various psychiatric illnesses
 - B. how depression affects the mood
 - C. the intense period of manic excitement
 - D. the mood changes of manic depression
28. According to the passage, a manic-depressive patient in a manic phase would be feeling
- A. highly emotional
 - B. relatively unhappy
 - C. listless
 - D. relatively normal
29. The passage indicate that most people
- A. never undergo mood changes
 - B. experience occasionally shift in mood
 - C. shift wildly from highs to lows
 - D. become highly depressed
30. The pronoun 'it' in bold refers to
- A. the general population
 - B. insomnia
 - C. the mood elevation
 - D. heightened aggressiveness

Text 2

Everyone must have best friends in their lives. A best friend is someone you believe you can trust your life with. A best friend is the first person you call when you have the most amazing things in your life, and when you are in the most horrific incidents. But, what if you fall in love with your best friends? If you have decided to choose your best friend as someone you will share your life with, there is a lot to consider. Take a moment to consider the advantages and disadvantages of taking your friendship to the next level.

Having a serious relationship with someone you've only been best friends until now may not be an easy task, but the following advantages may just make taking the risk worth it. Firstly, you have already laid the groundwork. A strong emotional bond is a strong foundation of any successful relationship. Next, you can bypass the awkward stuff. The good news about dating your best friend is that you can simply enjoy the excitement of taking your relationship to the next level. Besides, you have already had a solid emotional bond and have shared history of togetherness such as graduating from the same university together or gathering family by your side. Having shared important moments in each other's lives will make your connection stronger and even more likely to last.

On the other side, dating your best friend has also some disadvantages. Before taking a romantic relationship with your best friend, take a moment to consider the following drawbacks. First, are you willing to make the sacrifice? What if it doesn't last? If you break up, you might loss your friendship forever. Second, there is always a possibility for not having a mutual feeling between both of you. Decide in advance what your plans might be if your friend does not reciprocate: can you continue your

friendship with him/her? Could you take it if he/she dates someone else? Third, although you'll bypass the awkward getting-to-know-you stage, missing out on discovering a new person, their personality and their interests could prove to be a little boring for you.

While there are risks involved with confessing romantic feelings to your best friend, it is worth remembering that the greatest and most successful relationships often grow from great friendships, and it might just be the best decision you'll ever make.

31. In the text, it can be found out that the writer builds his arguments in the following way...

- A. persuades the reader to do or not to do something
- B. provides two opposite point of views
- C. explaining how something is happened
- D. provides detail information of something

32. Regarding the main idea of text above, the writer suggests that it is better

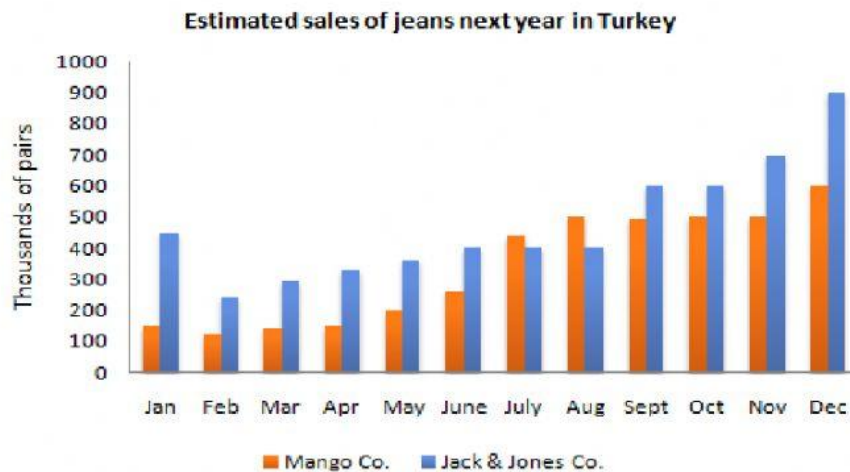
- A. not to fall in love with best friend because of the possible risks
- B. to fall in love with best friend due to their close relationship.
- C. to maintain the relationship just being a friend
- D. to continue building relationship.

33. One of the following coherence devices is used to show the way the writer builds the arguments.

- A. First – Second
- B. Advantages - Disadvantages
- C. Definition - Examples
- D. On the other hand

Text 3

The chart below shows the estimated sales of jeans for two companies next year in Turkey.



34. The chart shows that the overall sales for the Mango Co.....

- A. will increase during the twelve months.
- B. will rise between February and October.
- C. will be uncertain between January and August.
- D. will go up and down from January to October.

35. The chart shows that the overall sales for Jack and Jones Co.....
- A. will steadily go up and down.
 - B. will be stagnant after July.
 - C. will rise during the twelve months.
 - D. will be uncertain
36. The chart indicates that the overall sales for both companies are forecasted ...
- A. to be uncertain.
 - B. to rise.
 - C. to be stagnant.
 - D. to go up and down.

Text 4

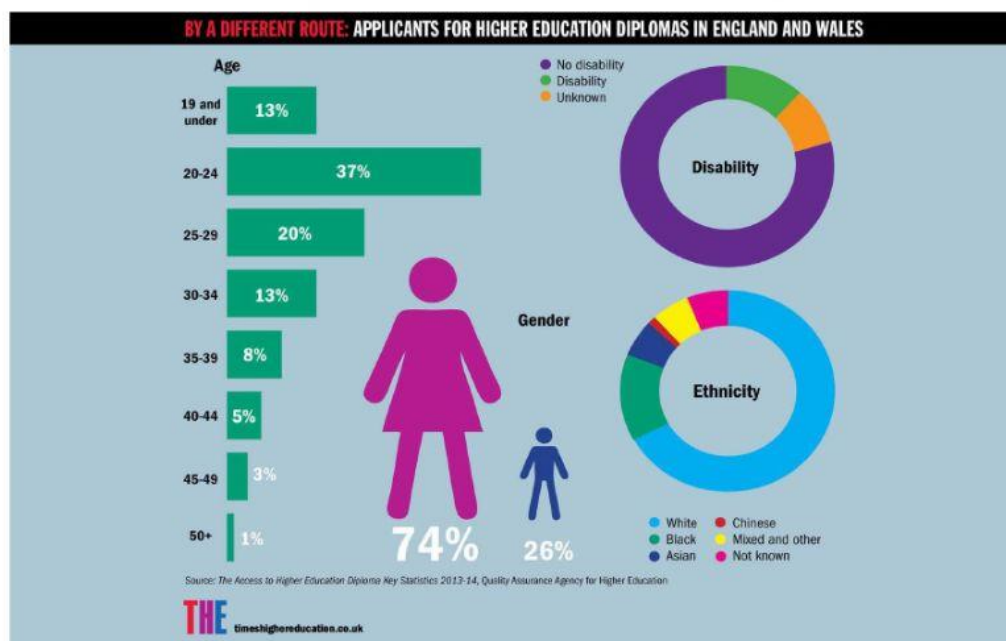
100% Orange Juice

Nutrition Facts			
Serving Size 8 fl oz (240ml)			
Servings Per Container 1			
Amount Per Serving			
Calories 110		Calories from Fat 0	
		% Daily Value	
Total Fat	0g		0%
Sodium	0mg		0%
Potassium	450mg		13%
Total Carbohydrate	26g		9%
Sugars 22g			
Protein 2g			
Vitamin C	120%	Calcium	2%
Thiamin	10%	Riboflavin	4%
Niacin	4%	Vitamin B6	6%
Folate	15%	Magnesium	6%
*Percent Daily Values are based on a 2,000 calorie diet. Your daily values may be higher or lower depending on your calorie needs.			
Ingredients: 100% pure Florida squeezed orange juice			

37. Based on the label, if you drink two glasses of orange juice, you will...
- A. consume 220 calories.
 - B. consume 240% of Vitamin C.
 - C. have no fat in your drink.
 - D. have extract of orange juice.

38. If you drink the juice twice a day with 12ml glass. How many days will you need to consume the whole juice?
- 20 days
 - 10 days
 - 24 days
 - 12 days
39. The ingredient(s) of the juice is/are...
- Pure orange juice.
 - Potassium, sugar, carbohydrate and protein.
 - Vitamins, calcium, magnesium, Thiamin, niacin.
 - Orange juice, vitamins, protein, and many others

Text 5



40. Based on Graph 1 it is obvious that ...
- the most dominant applicants for higher education Diplomas in England and Wales from the perspective of ethnicity is white.
 - women are the least applicants higher education.
 - the least number of applicants are those between the age of 35 - 39 years.
 - the applicants are dominantly disable.
41. From Graph, which one of the followings is not correct?
- The number of male applicants is fewer than female.
 - Asian applicants are not dominant
 - The most dominant applicants are at the age 20 – 24 years.
 - The number of disability is as many as the unknown.

Text 6:

*175 Pitkin Park Road
Apt. No. 7
Montpelier, VT
05602-2950*

*April 10, 2017
Martin Gavin
175 Pitkin Park Road
Apt. No. 15
Montpelier, VT
05602-2950*

*Dear Martin:
Re: Parking Garage Problem*

Please regard this as a letter of apology for the recent problems that I caused you by moving your belongings in the parking garage without your permission.

Believe me, I had no intention of causing you any problems. Over the long weekend I decided to rearrange my space in the garage and install some new shelving on the front wall opposite my parking space. While I was at it I thought I would also tidy up the entire garage. It was during that process that I noticed that your boxes of books were stored, what I thought was, dangerously close to the electric heating element. So, I took the liberty of moving those boxes to the other side of the garage. It didn't occur to me at the time that this would block the entry and exit on the passenger side of your vehicle.

After you brought this to my attention Monday evening I immediately moved your boxes back to where they were stored originally. As you suggested, by stacking them carefully I was able to place them so that there was sufficient safe clearance from the heating element. I trust you will find everything in order now.

I'm really sorry that I didn't check with you first before moving your belongings. I can now see how it would have upset you to return after the holiday weekend and find your belongings moved for no apparent reason. All I can say is that it won't happen again.

Sincerely,

Jeff Gibson

42. What is the purpose of the letter?
- A. To inform about parking faulty C. To inform about moving other's belongings
B. To express an apology D. To reply a regret
43. Jeff sent the letter to Martin because....
- A. He wanted to give the reasons of moving Martin's belongings.
B. He wanted to show regret that he had put Martin's belongings close to electric heating.
C. He wanted to apology that he had damaged Martin's boxes.
D. He wanted to say sorry and responded to Martin's complaint.