

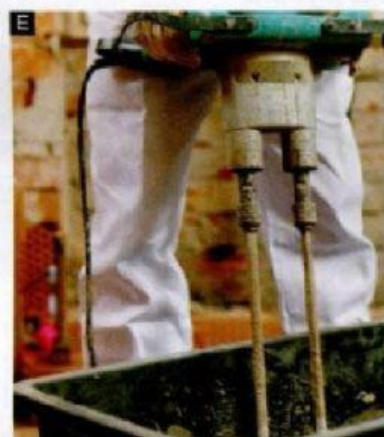
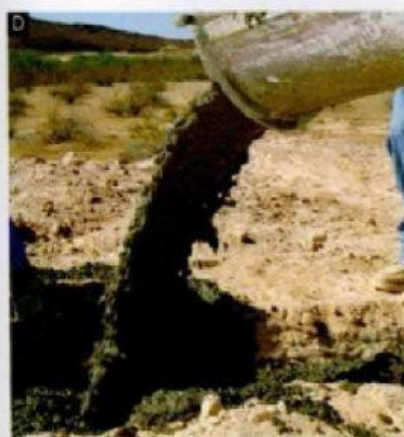
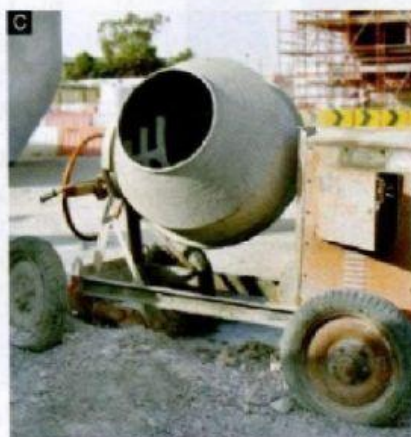
Reading 4 Read this text about mixing concrete. Are sentences 1–5 *true* (T) or *false* (F)?

Concrete mixers mix and pour concrete. For small quantities of concrete, hand mixers are ideal. The portable mixer has wheels and uses electricity. It has a small drum which rotates. Concrete transport trucks – or in-transit mixers – transport large quantities of concrete to the site. The drum rotates during transport. The chute man pours the concrete down the chute, or uses a pump to get the concrete to difficult locations. Sometimes a crane lifts a hopper full of concrete to the job site.

- 1 Concrete mixers mix and pour concrete. (T / F)
- 2 For small quantities of concrete, transport trucks are ideal. (T / F)
- 3 Portable mixers use electricity. (T / F)
- 4 Cranes lift hoppers full of chute men to the job site. (T / F)
- 5 In-transit mixers rotate during transport. (T / F)

Vocabulary 5 Label photos A–F with the equipment in the box.

chute concrete pump concrete transport truck
hand mixer hopper portable mixer



Speaking 6 Work in pairs. Look at the photos in 5. Make three sentences about each photo. Then compare your sentences with another pair.