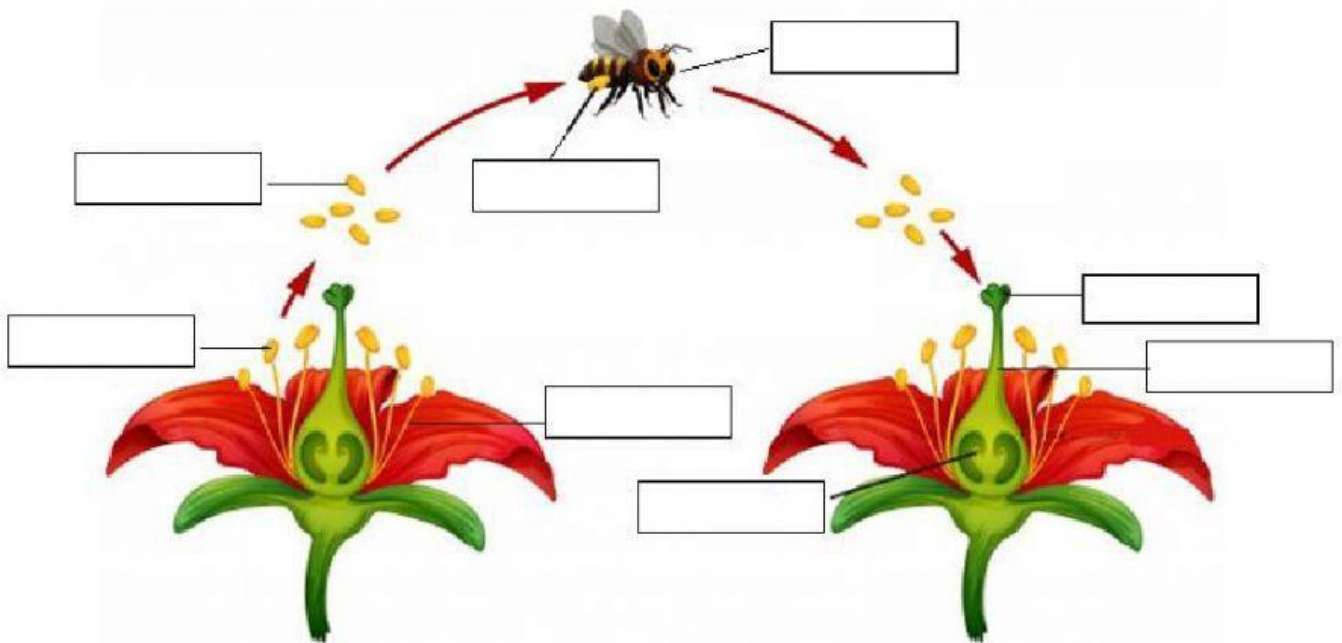


# Pollination

pollen grains	stigma	ovary	filament
style	pollen	pollinator	anther



- \_\_\_\_\_ is when pollen is **moved** from the anther (male part) to the stigma (female part).
- \_\_\_\_\_ is a fine powder usually yellow.
- Flowers use pollen to make \_\_\_\_\_.
- \_\_\_\_\_ are agents who move the pollen from flower to flower.
- Examples of **pollinators** are: \_\_\_\_\_