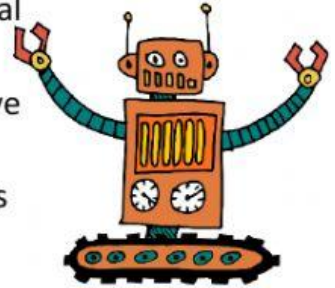


# MACHINES



## 1. Complete the following paragraph.

\_\_\_\_\_ are devices that help us doing tasks with less effort. In general there are two types of machines: \_\_\_\_\_ and \_\_\_\_\_. \_\_\_\_\_ are simple machines, they help us move heavy objects. They are formed by a rigid bar placed on a support. On the other hand, we can find \_\_\_\_\_ they are used to raise objects with less effort. Another example of a simple machine is a \_\_\_\_\_ formed by a wheel an axle and a rope. It is used for lifting objects easily.



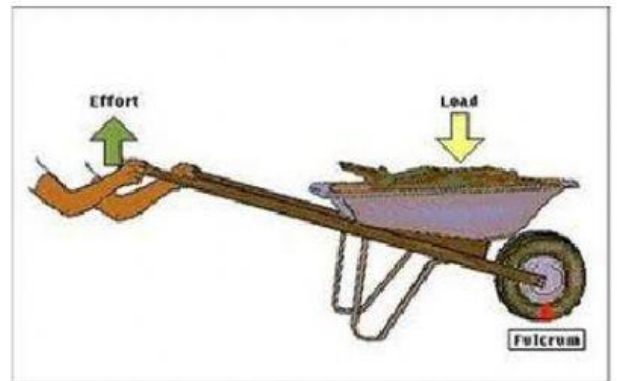
## 2. What are the following machines? Put the correct name.



\_\_\_\_\_



\_\_\_\_\_



\_\_\_\_\_

Lever

Inclined plane (ramp)

Pulley

## 3. Are the following sentences TRUE or FALSE?

- Complex machines don't need energy (fuel, batteries, electricity) . \_\_\_\_\_
- A lever is an example of a complex machine. \_\_\_\_\_
- A smartphone is an example of a simple machine. \_\_\_\_\_
- Washing machines need energy to work. \_\_\_\_\_



**3. Match the following pictures with the correct classification of the machines**



**Electrical machine**



**Thermal machine**



**Manual machine**



**Manual machine**



**Thermal machine**



**Electrical machine**