

16 Pierre climbs mountains.

He boils water when he is camping on a mountain.

He notices that the water boils at **different** temperatures.

He writes down the height of the mountain and the temperature that the water boils.

Here is the page from his notebook.

500 m	98°C
1000 m	97°C
1500 m	95°C
2000 m	93°C
2500 m	91°C

(a) Complete the table with Pierre's results.

Include the headings.

[3]

(b) Pierre makes a conclusion.



The temperature of the boiling water increases the higher I am up the mountain.

Do Pierre's results support his conclusion?

.....

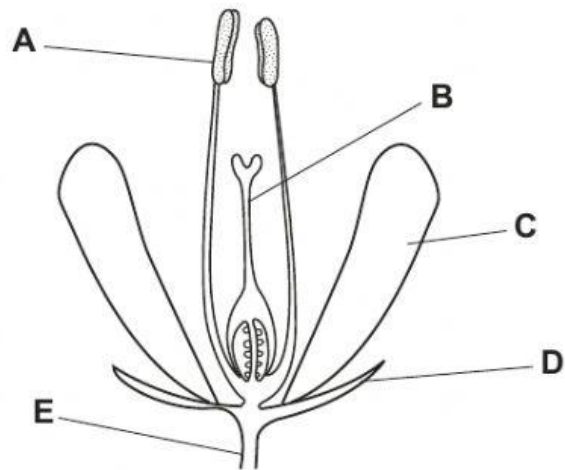
Explain your answer.

.....

.....

[1]

17 The diagram shows parts of a flower.



(a) Which part of the flower is a **male** organ?

Circle the correct answer.

A **B** **C** **D** **E**

[1]

(b) Which part of the flower is a **female** organ?

Circle the correct answer.

A **B** **C** **D** **E**

[1]

18 Humans have a positive and a negative effect on the environment.

Which one of the following has a **positive** effect on the environment?

Tick (✓) the correct answer.

increasing waste

littering

causing loss of species

protecting habitats

increasing energy use

[1]

19 The picture shows a koala.



Koalas have a skeleton similar to humans.

(a) Complete the sentence about skeletons.

Choose from

excretion

nutrition

reproduction

senses

support

Skeletons are needed for movement, protection and [1]

(b) Complete the sentence about skeletons.

Choose from

hair

muscles

organs

skin

teeth

To move the skeleton the body needs

[1]