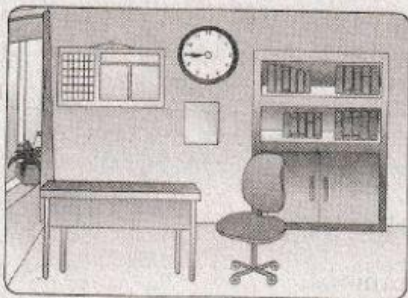


Listening

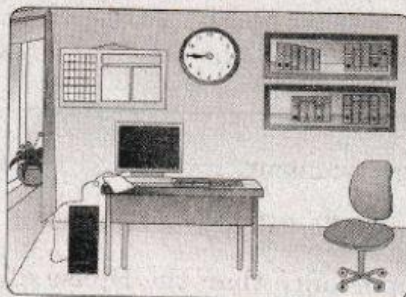
Task 1

Listen to the speakers. For questions (1—6) choose the correct answer (A, B or C). Write your answers on the separate answer sheet. You will listen to each recording twice.

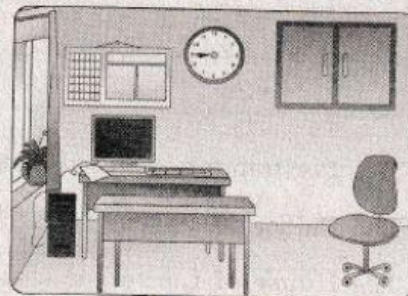
- 1 Where are the most important documents kept?



A

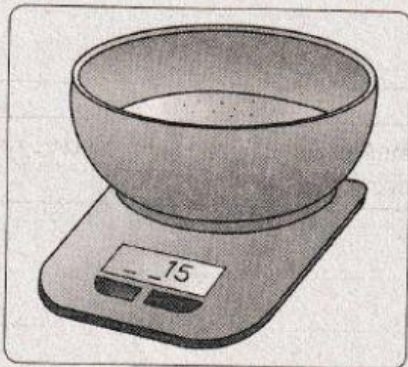


B

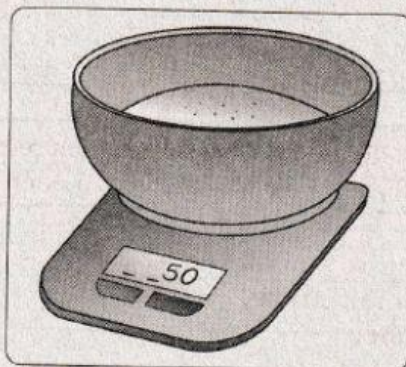


C

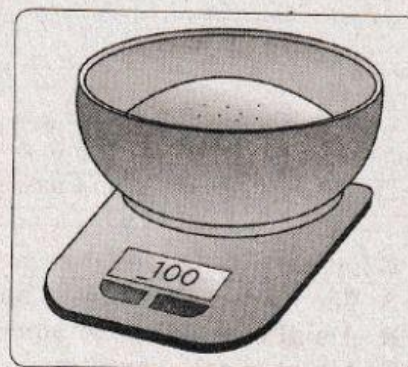
- 2 How much butter will she need for two cakes?



A

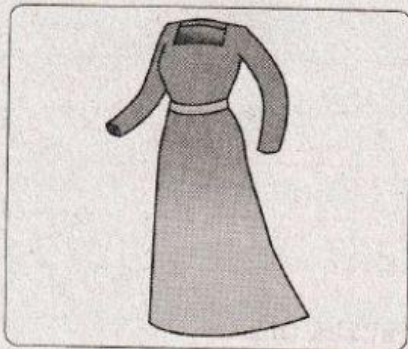


B

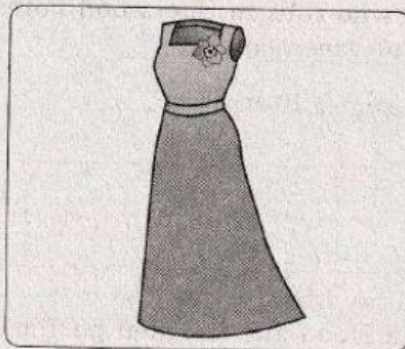


C

- 3 What will she wear for the event?



A



B



C

- 4 What was unusual for the man?

- A The film was long but he still enjoyed it.
- B The man in front of them was sleeping during the film.
- C He didn't notice the man sleeping.

- 5 What didn't the woman mention about the course?
A The living conditions and the location.
B The content of the course and the timetable.
C The food included in the cost.
- 6 What do the organizers of the meeting promise?
A Everybody who wants to buy a new book will be able to do it at the meeting.
B Gerry Williams will have an interview with local bookstore owners.
C Some people who come to the meeting will get a gift.

Task 2

Listen to the text. For statements (7—11) choose T if the sentence is true according to the text, and F if it is false. Write your answers on the separate answer sheet. You will listen to each recording twice.

- 7 The Parliament can affect the government.
8 The Palace of Westminster used to be called the Houses of Parliament.
9 The House of Lords has less importance than the House of Commons.
10 The House of Lords can prevent a bill from becoming a law.
11 A person must meet certain demands in order to be able to vote.

Task 3

Listen to the text. For questions (12—16) choose the correct answer (A, B or C). Write your answers on the separate answer sheet. You will listen to each recording twice.

- 12 What was Robin Hood according to the legend?
A The subject of ballads, books and films.
B A skilled swordsman and archer.
C A historical character.
- 13 What isn't true about Robin Hood?
A He was the most loyal of the supporters of Richard the Lionheart.
B He is described as an outlaw who robs in Sherwood Forest.
C His traditional clothes were of green colour.
- 14 When did Robin Hood first appear in literature?
A In the 12th century.
B In the 14th century.
C In the 15th century.
- 15 What were Robin Hood games?
A Games he played with his Merry Men.
B Games and plays about Robin Hood and his men performed at the theatre.
C A part of the May Day festivities.
- 16 What is stated in historical medieval books?
A Robin Hood was a real man who lived in the 12th or 13th century.
B Nottinghamshire is a popular tourist attraction.
C From the text it's impossible to know for sure whether Robin Hood ever existed.