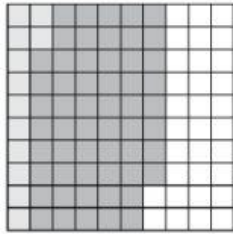


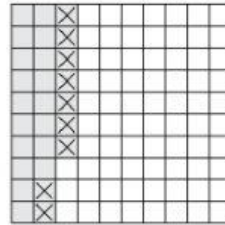
## Topic 2 Test

Add or subtract. Use hundredths grids if necessary.

$0.12 + 0.56 = \underline{\hspace{2cm}}$



$0.27 - 0.09 = \underline{\hspace{2cm}}$



$0.86 + 0.54 = \underline{\hspace{2cm}}$

$1.27 + 0.75 = \underline{\hspace{2cm}}$

$0.93 - 0.25 = \underline{\hspace{2cm}}$

$1.07 - 0.61 = \underline{\hspace{2cm}}$

$1.13 - 1.02 = \underline{\hspace{2cm}}$

$0.28 + 1.96 = \underline{\hspace{2cm}}$

A dollhouse has 15.15 square feet downstairs and 6.25 square feet upstairs. Which of the following is a reasonable estimate of the total square footage in the dollhouse?

- A 9 square feet
- B 21 square feet
- C 90 square feet
- D Not here

Lexi went shopping and bought shirts that cost \$12.15 and \$16.85. She paid \$1.74 in taxes. How much she did she pay in all? Use mental math to solve.

- A \$29.00
- B \$30.74
- C \$30.85
- D \$32.74

Shemekia has one basket of fruit that weighs 23.7 pounds. She has another basket of vegetables that weighs 6.912 pounds. What is the combined weight of the two baskets?

Landon had one string that was 10 meters long. He used 6.275 meters of this string for a project.

What was the length of string in meters that Landon had left?

- F** 16.275 m
  - G** 4.275 m
  - H** 3.725 m
  - J** 6.265 m
- 

The table shows the population of three Texas counties. The population of Gray County is missing.

Population	
County	Population
Anderson	58,308
Dallas	2,416,014
Brazos	197,632
Gray	

The population of Gray County is 35,553 less than the population of Anderson County. What is the combined population of these four counties?

- F** 2,694,709
  - G** 2,707,507
  - H** 2,695,209
  - J** 2,765,815
- 

The table shows the heights and masses of a male gorilla and a female gorilla at a zoo.

Gorillas		
	Height (m)	Mass (kg)
Male	1.68	158.757
Female	1.448	95.25

Based on the table, which statement is true?

- F** The combined mass of the male gorilla and the female gorilla is 253.782 kg.
  - G** The mass of the male gorilla is 63.507 kg greater than the mass of the female gorilla.
  - H** The female gorilla is 1.28 m shorter than the male gorilla.
  - J** The combined height of the male gorilla and the female gorilla is 2.028 m.
-