

## FINAL TEST PREPARATION OF SCIENCE GRADE 6

	Full Name	:	-----	
	Class	:	-----	Attendance List : -----

*Bismillahirrahmaanirrahim*

Answer the questions based on the instruction given.

1. Write how the way to separate mixture.

**Magnetic attraction**

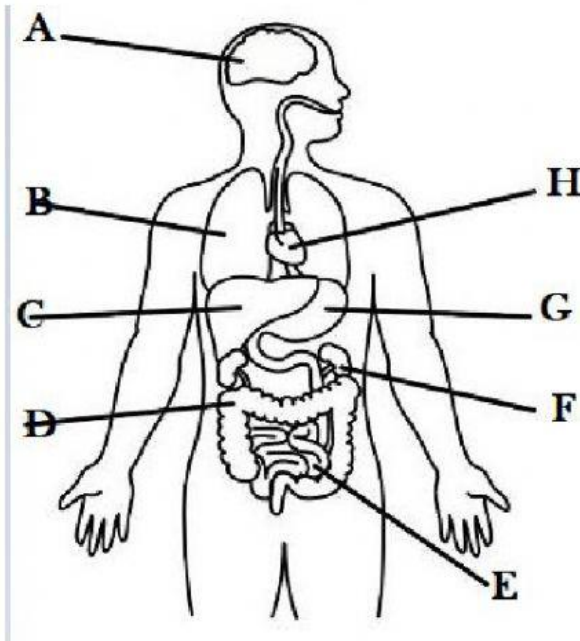
**Add water then filter**

**Sieve the mixture**

**Evaporate all the liquid**

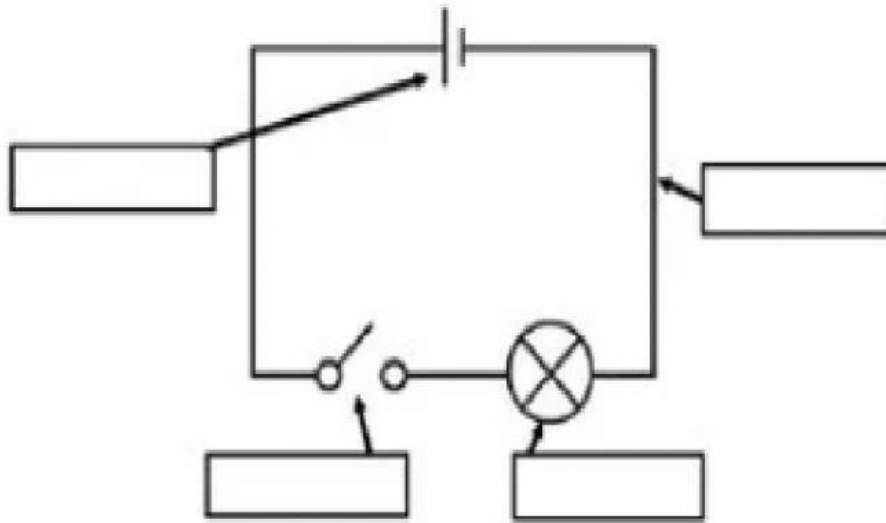
- a. Iron powder and coffee powder : .....
- b. Iron and sand (all in powder) : .....
- c. Salt solution : .....
- d. Taking salt from sea water : .....
- e. Lumps of iron and iron power : .....
- f. Copper powder and steel powder : .....
- g. Salt and sand : .....

2. Look at the major organ of body.

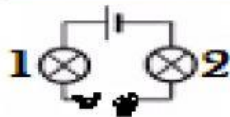


- a. The organ that breaking down poisons is ... .
- b. The organ that taking in oxygen is ... .
- c. The organ that digesting food are ... , ....., and ... .

3. Label these electrical circuit.



4. Identify these electrical circuit diagram.



- Lamp 1 does not light. Hakim says "lamp 2 will light". Is it correct? Yes - NO
- Explain your answer!
- What does Hakim do to make lamp 1 light?
- What flows through the electrical circuit when lamp A lights?

.....

.....

5. Mickal is cooking some rice. He cooks the rice in boiling water for 30 minutes.

- The temperature of boiling water is ... .
- Explain how Mickal separates the rice from water.
- Cooking rice is ... changing, because it is ... .

6. Match the materials and its properties.

material		property
		1 colourless gas
copper	a	2 attracted towards a magnet
gasoline	b	3 silver liquid
oxygen	c	4 red-brown solid
salt	d	5 flammable
steel	e	6 white solid
		7 soft

A to .....

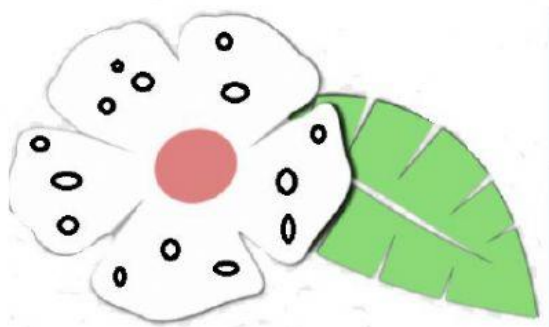
B to .....

C to .....

D to .....

E to .....

7. Belva investigates shadows. She makes a flower shape.



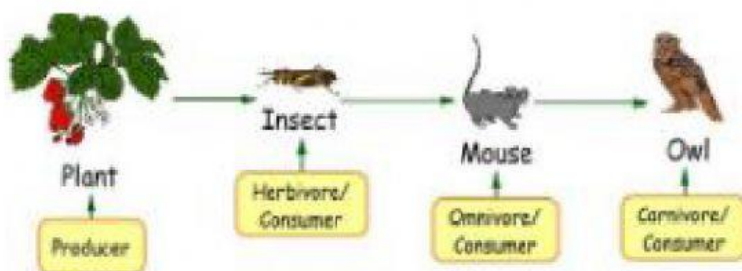
She shines a light on **flower** shape. A shadow is made on screen

- a. Draw the shadow

- b. The flower is moved closer to the screen. The light is not moved. Describe what happens to the shadow.

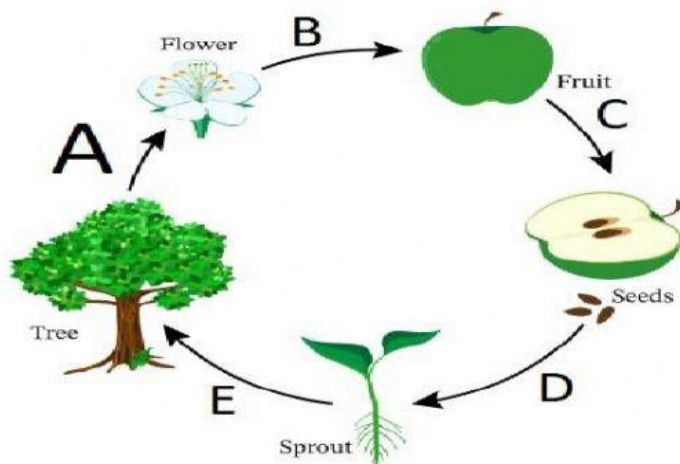
.....  
.....

8. Look at this food chain.



- a. All the food chain begin with a .....
- b. In this food chain this is the .....
- c. In this food chain there are ..... consumers
- d. Name all the predators in this food chain.  
.....
- e. The living organism gets energy from the .....

9. Look at the life cycle of apple tree.



- Pollination is shown by .....
- Germination is shown by .....
- Seed production is shown by .....
- Explain how the apple can do their pollination.

.....

.....

10. Look at the life cycle of a plant.

Fertilization → seed production → stage x → germination

- Describe what happen during stage x
- Suggest why stage x occurs during the life cycle of a plant
- Seed production happens in the ... of a plant
- Fertilization happens when ...

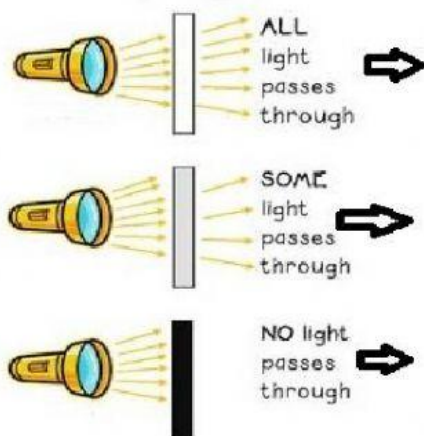
.....

.....

.....

.....

11. Identify these materials.



12. Write true or false about the statement.

- a. Pitch is a volume of sound (.....)
- b. Pitch is force (.....)
- c. When something vibrates it will make sound (.....)
- d. Sound something loud or quiet. (.....)
- e. Sound unit is decibel. (.....)
- f. Sound is measured by sound level meter. (.....)
- g. Sound moves quickly in solid materials. (.....)

13. Here are the results of 6 grade investigation.

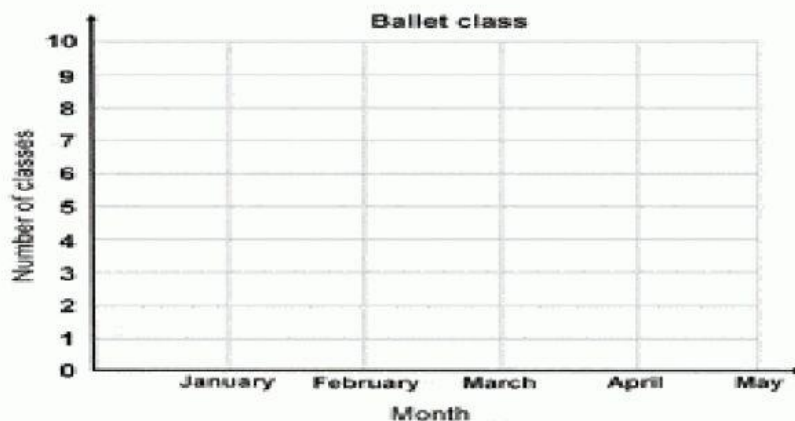
Substance	Melting point
A	30
B	100
C	0

- a. The temperature of class 6 is  $29^{\circ}\text{C}$ , so substance A is a ..... in the class.
- b. A student thinks that substance C is water. Explain why?  
.....  
.....
- c. Other student finds more information so she knows substance C is water. Suggest what information he finds.  
.....  
.....

14. Mary recorded the number of ballet classes, she had for 5 months. Draw a line graph using the given data.



Month	Number of classes
January	8
February	7
March	6
April	10
May	5





15. Look at these animals.

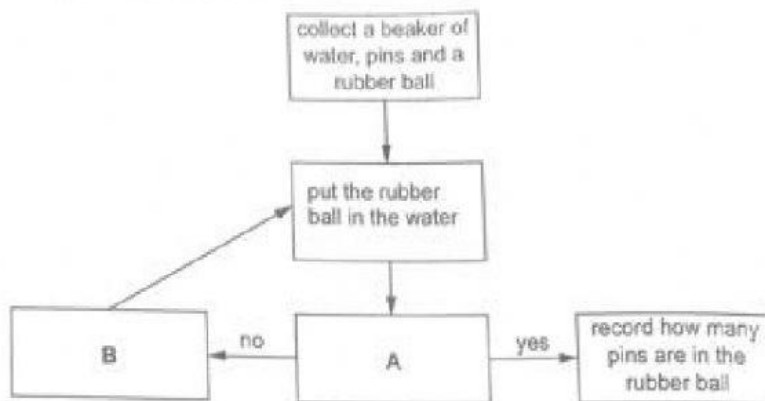


- The animal that grips and tears the flesh of its prey is the ....  
It grips its prey because it has .....
- The animal that hears its prey when it is a long distance away is the ....  
It hears its prey because it has .....

16. Azra investigates sinking. She uses a rubber ball that does not sink in water. She adds one pin to the rubber ball then puts the rubber ball in water. She observes if the rubber ball sink.

Write down the missing instruction in A and B

Here is part of her method.



17. Match these sentences.

insoluble A

soluble B

solution C

solvent D

1 a solid that dissolves in water

2 the liquid that dissolves a solid

3 a solid that does **not** dissolve in water

4 a mixture of a dissolved solid and water

A to ....

B to ...

C to ...

D to ...

18. Mention 7 life processes.

.....  
.....

19. There are crab, cactus, brush, and starfish in a group of living thing. The one that wrong group is ... .

20. Write the name of the the force in these picture.



21. The unit of mass is ... but the unit of weight is ... .

22. Belva is playing a guitar.

- a. Belva hears the guitar because the air between the guitar and her ear .... .
- b. If Belva changing the length of the guitar string will change the ... of sound.
- c. Plucking the guitar string with more force will make the sound .... .

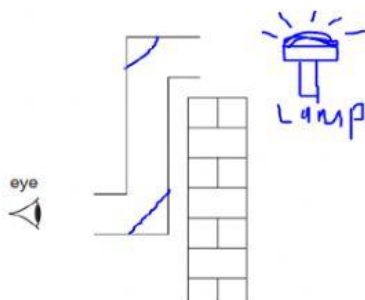
23. Circle the correct direction of the car.



24. Steel is mixture of iron and carbon. Suggest the effect of adding carbon to iron.

.....  
.....

25. There are two mirrors on the periscope.



Draw a ray of light source through the periscope to eye and draw an arrow on your ray of light to show the direction the ray of light travels.