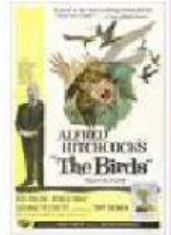


Past Simple Passive

Important landmarks **were built** near the Thames.
The tourists **weren't taken** on a boating trip.
Was the Thames **used** for entertainment in the past?

1. COMPLETE THE SENTENCES WITH THE VERBS IN BRACKETS.
USE THE PAST SIMPLE PASSIVE.
THEN ADD THE CORRECT PERSON.

■ the Beatles ■ artist John Constable ■ Alfred Hitchcock ■ Charles Dickens ■
■ Florence Nightingale ■ architect Christopher Wren ■



- The painting *Salisbury Cathedral* _____ (paint) by _____.
- The books *David Copperfield* and *Oliver Twist* _____ (write) by _____.
- The song *Yesterday* _____ (sing) by _____.
- Many famous suspense films _____ (make) by _____.
- St. Paul's Cathedral* and many other buildings _____ (build) by _____.
- A school for nurses _____ (open) in London by _____.

- 2.- COMPLETE THE NEWS ARTICLE WITH THE VERBS IN BRACKETS. USE THE PAST SIMPLE PASSIVE.



Polar Bears on the Thames

Wednesday, 18th January 2009

Two strange visitors 1. _____ (see) on the river Thames earlier today. At 8 o'clock this morning, surprised Londoners saw a polar bear and her cub on the river Thames. The five-metre sculpture 2. _____ (pull) by a boat from Greenwich to the Houses of Parliament.

The giant sculpture 3. _____ (create) by 15 artists. It 4. _____ (make) to show people the desperate situation of the polar bear. Because of the global warming, the polar bear has lost much of its natural habitat.

The River Thames has had some other unusual visitors. In 2004, some dolphins 5. _____ (find) near Vauxhall Bridge. In 2006, a seven-tonne whale 6. _____ (discover) near Battersea Bridge. People tried to rescue the whale, but sadly it died.

- 3.- COMPLETE THE QUESTIONS IN THE QUIZ WITH THE VERBS BELOW. USE THE PAST SIMPLE PASSIVE. THE CHOOSE THE CORRECT ANSWERS.

build ■ play ■ write ■ wear ■ destroy



- Where _____ (golf) for the first time?
a. in Scotland b. in Wales c. in England
- Which famous British landmark _____ more than 4,000 years ago?
a. Windsor Castle b. Stonehenge c. Buckingham Palace
- When _____ (many London buildings) in a fire?
a. 1666 b. 1866 c. 1966
- Which two plays _____ by Shakespeare?
a. Macbeth b. Antigone c. Romeo and Juliet
- When _____ (the first mini skirt)?
a. 1965 b. 1940 c. 1997

