

CD 4-5))) Part 1

Look at the pictures. For each picture you will hear four statements. Choose the statement that matches the picture. Use your answer sheet.



A B C D



A B C D



A B C D



A B C D



A B C D



A B C D

CD 4-6 **Part 2**

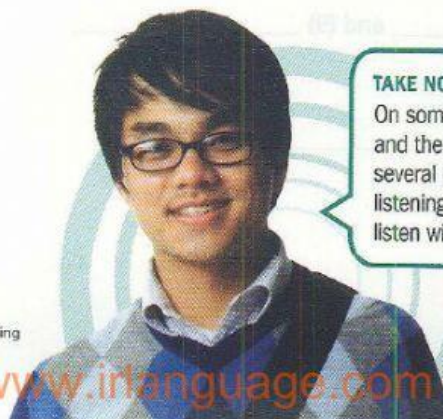
Listen to each question. Choose the correct response. Use your answer sheet.

7. A. I don't feel like it.
B. That's kind of you to offer.
C. Something quick and easy.
8. A. Sure, if you like.
B. No, I'm sick of junk food.
C. Actually, I don't eat meat.
9. A. I've never seen him wear that color.
B. No, Thai food is too spicy for him.
C. I think it's in his closet.
10. A. I think I like the other belt better.
B. Oh, are we about to land?
C. I can't go any faster.
11. A. I'd like to check this bag in.
B. I work in the sales department.
C. Can't I keep it under my seat?
12. A. No, the washing machine is leaking.
B. I think I need more exercise.
C. Yes, it's been raining all day.

CD 4-7 **Part 3**

Listen to the following conversation. Choose the correct answer for each question. Use your answer sheet.

13. What are the speakers discussing?
A. Plans for an upcoming birthday
B. What they want to do for Mother's Day
C. A restaurant they went to last week
D. An upcoming trip
14. Why does the woman reject the man's first suggestion?
A. She doesn't like flowers.
B. The restaurant is too expensive.
C. She doesn't want to do the same as last year.
D. She had forgotten the date.
15. What can be inferred about the speakers' mother?
A. She went to the Imperial Hotel last year.
B. They haven't bought her flowers before.
C. She is difficult to satisfy.
D. She likes to eat French food.



TAKE NOTES AS YOU LISTEN

On some tests, such as the TOEIC® test and the TOEFL® test, you will answer several questions about the same listening passage. Taking notes as you listen will help you remember details.

TOEIC® and TOEFL® are registered trademarks of Educational Testing Service (ETS). This publication is not endorsed or approved by ETS.

www.irlanguage.com