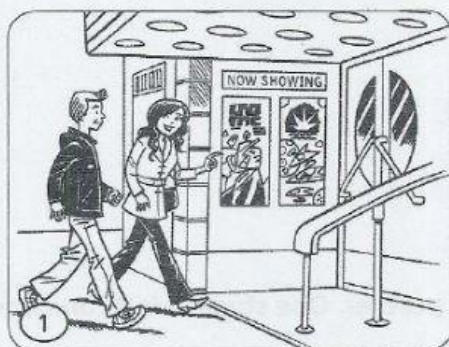
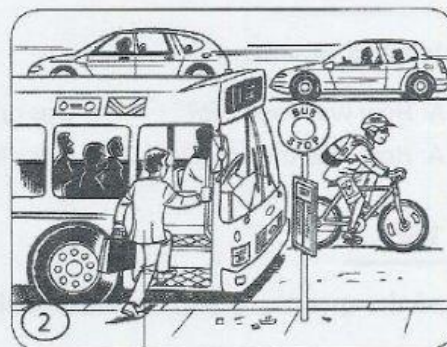


#### CD 4-2 Part 1

Look at the pictures. For each picture you will hear a question and four statements. Choose the statement that best matches the picture.



(A) (B) (C) (D)



Joel (A) (B) (C) (D)

Train Departures			
Destination	Time	Platform	Status
Cambridge	13:25	3	on time
Boston	14:05	4	delayed 10 mins
Philadelphia	15:00	1	on time
Washington DC	14:10	2	delayed 15 mins

(A) (B) (C) (D)



(A) (B) (C) (D)



(A) (B) (C) (D)



(A) (B) (C) (D)



CD 4-3 **Part 2**

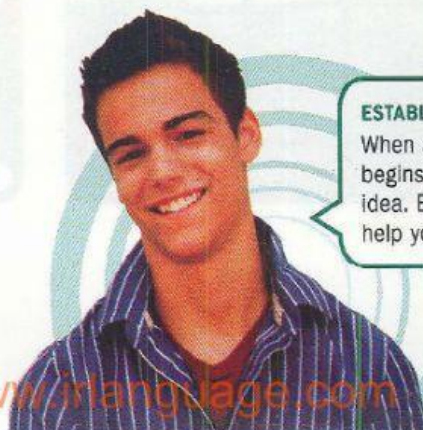
Listen to each question. Choose the correct response. Use your answer sheet.

7. A. Oh, I met some friends and we went out for dinner.  
B. Yes, it's too bad the weekend is over.  
C. I worked all day on Monday.  
D. I think I'll stay home and relax.
8. A. Yes, I think it was last night.  
B. I don't really like playing games.  
C. What time does it start?  
D. No, I fell asleep on the sofa.
9. A. But I love classical music.  
B. Yes, it is the next station.  
C. We can take the bus from here.  
D. I think they already changed it.
10. A. It is a great game.  
B. It's just not my favorite.  
C. When I drive the car.  
D. It makes me want to dance.
11. A. He goes to the gym.  
B. I think he rented a movie.  
C. He said it's his last weekend.  
D. He's moving to a new house.
12. A. Yes, I had a really good time.  
B. You can bring a friend if you like.  
C. No, it's not my birthday.  
D. Sure. What kind of party is it?

CD 4-4 **Part 3**

Listen to the following short conversations and answer the questions below. Use your answer sheet.

13. What did the woman do on Saturday?  
A. She went bowling with her boyfriend.  
B. She had a boring weekend at home.  
C. She met her girlfriends in the evening.  
D. She stayed home and watched TV.
14. Who is the man?  
A. A hotel guest  
B. A passenger  
C. A cyclist  
D. A taxi driver
15. What does the woman say about the food?  
A. She likes the cheese.  
B. She made them herself.  
C. She's never had goat meat before.  
D. Her mother gave her the recipe.



**ESTABLISH THE MAIN IDEA**

When a new listening passage begins, try to establish the main idea. Establishing the main idea will help you pick out important details.