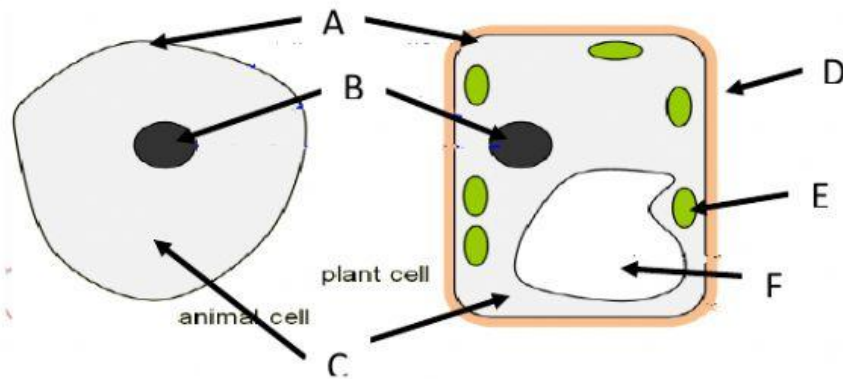


Name.....Class.....Number.....

Part1. Label the parts of plant cell and animal cell.



- A. _____
- B. _____
- C. _____
- D. _____
- E. _____
- F. _____

Chloroplast	Vacuole	Nucleus	Cell membrane
Cytoplasm	Cell wall	Mitochondria	

Part 2. Match each of the following cell structures to its function

- | | |
|----------------------------|--|
|Chloroplasts | A. The control center of the cell |
|Vacuole | B. Power center of cell |
|Golgi body | C. Found only in plant cells Protects and supports the cell |
|Cytoplasm | D. Protects cell by digesting foreign invaders "Police men" |
|Nucleus | E. a jelly-like fluid contained in the cell that holds the organelles. |
|Mitochondria | F. Packaging house of cell Packages, processes, and ships out the stuff the cell makes |
|Ribosomes | G. Found only in plant cells Contains chlorophyll (makes plants green) |
|Cell Wall | H. proteins synthesis |
|Lysosomes | J. Stores water, food & wastes |
|Endoplasmic reticulum | K. Transportation system of cell |
| | L. The body of a multicellular organism consists of more than one cell. |
| | N. The organisms that consist of a single cell |