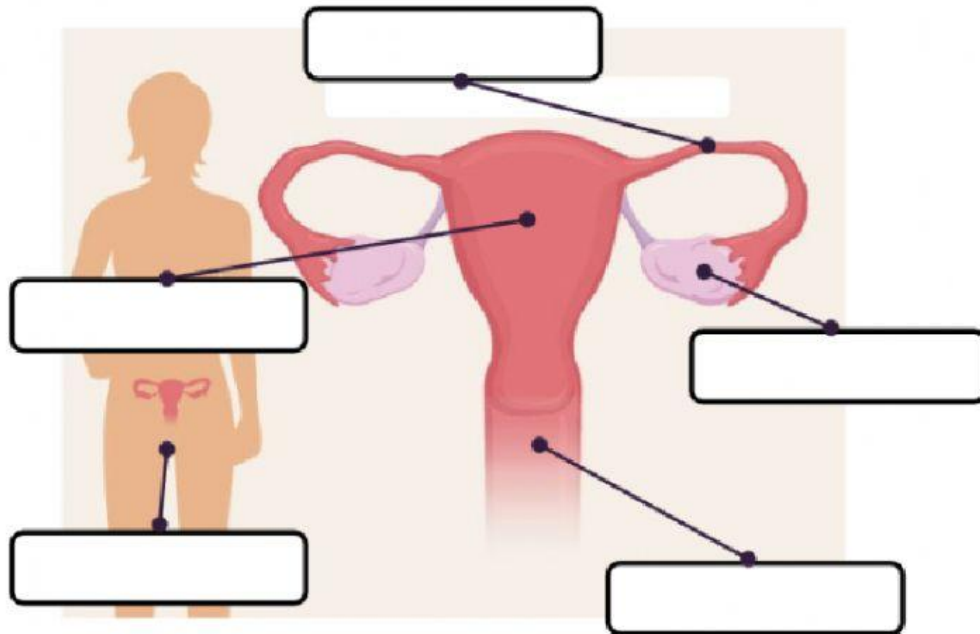


FEMALE REPRODUCTIVE SYSTEM

1. Label the parts of the female reproductive system.



2. Match the parts of the female reproductive system with their functions.

UTERUS

The place where the egg fuses with the spermatozoid (fecundation).

OVARIES

An organ which protects the vagina.

OVIDUCTS OR
FALLOPIAN TUBES

The organ in which the embryo is
implanted.

VAGINA

The female gonads that produce eggs.

VULVA

It is the birth canal that allows the baby
to be born.