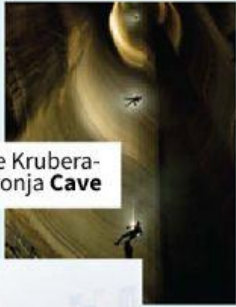


6 The physical world

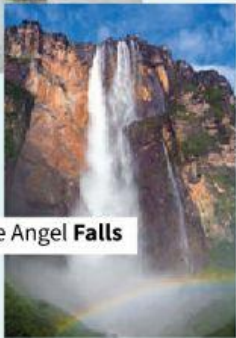
A Facts



The Krubera-Voronja **Cave**



Beijing-Hangzhou Grand **Canal**



The Angel **Falls**

DID YOU KNOW...?

Two thirds of the **surface**¹ of the **Earth**², is **covered in**, water.

El Azizia in Libya is the hottest place **in the world**, where **temperatures** of **over**³ 57 °C (57 **degrees** Celsius) have been recorded.

The coldest place **on earth** is probably Vostok in Antarctica, which reached a temperature of **minus** 89 °C.

The Krubera-Voronja **Cave** near the Black Sea coast in Georgia, is the deepest cave in the world. It is **over** 2000 metres deep.

The Beijing–Hangzhou Grand **Canal** is the longest canal in the world. It is 1,794 kilometres long.

The highest **waterfall** in the world is the Angel Falls in Venezuela. It is 979 metres high.

The Amazon Rainforest is the largest **rainforest** in the world, **covering** 40% of the South American continent.

The Pacific is the largest **ocean** in the world, and is nearly twice the size of the Atlantic Ocean.

¹ the top or outside part

² the planet we live on

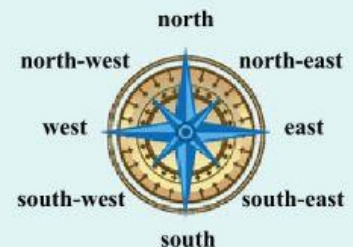
³ more than

Language help

Cover can mean that something is over something else, e.g. *The surface was **covered in** water; The ground was **covered with** snow.* Cover can also refer to the size of something, e.g. *The Amazon rainforest **covers** 40% of South America,* or the distance you travel, e.g. *We **covered** ten miles in one day.*

B Geography

Switzerland **consists of** [is made or formed from] three main geographical **regions** [areas in a country or the world]: The Swiss Plateau, The Jura, and The Alps. Switzerland is a land of **contrasts** [big differences], with completely different **landscapes** [the appearance of an area of land]. The **climate** [weather conditions] can also change within a very short **distance**. For example, Ascona **in the south** has an almost Mediterranean climate, but the Dufour Peak in Valais has a very cold climate. The **distance** between the two is just 70 kilometres.



Exercises

6.1 Look at the map of Switzerland and complete the sentences.

- 1 Zurich is *in the north*
- 2 The Jura mountains are
- 3 Geneva is
- 4 St Gallen is
- 5 Basel is
- 6 Lake Constance is
- 7 Locarno is

6.2 Test your knowledge. Can you complete these sentences without looking at the opposite page?

- 1 Two thirds of the *surface* of the Earth is covered in water.
- 2 Vostok in Antarctica is the
- 3 El Azizia in Libya is the
- 4 The Krubera-Voronja is the deepest in the world.
- 5 The Beijing–Hangzhou Grand is the longest in the world.
- 6 At 979 metres the Angel Falls is the highest in the world.
- 7 The Amazon is the largest
- 8 The largest in the world is the Pacific.
- 9 The we live on is called the Earth.

6.3 Complete the sentences.

- 1 Mount Everest is the highest mountain in the *world*
- 2 In the autumn, the ground is in leaves that have fallen off the trees.
- 3 You find this animal in the semi-desert of Australia.
- 4 Brazil is a country of : large empty areas inland, and cities near the coast.
- 5 The Amazon rainforest 40% of the South American continent.
- 6 Mountains and lakes are typical of the in Switzerland.
- 7 It was a freezing night. The was well below zero.
- 8 Switzerland of three main geographical regions.
- 9 It takes the moon just under 28 days to go round the
- 10 People say Cape Town in South Africa has a wonderful : sunny for much of the year, and never too hot or very cold.
- 11 The from London to Paris is 340 kilometres; that's less than the from London to Edinburgh.
- 12 When the temperature fell to 10 Celsius, all the schools in the town closed.

6.4 Over to you

Answer the questions about your country and your region.

- 1 What are the highest and lowest temperatures?
- 2 Do you like the climate?
- 3 Are there any regions which have a very different landscape from the rest of the country?
- 4 Do you have any long canals, or famous caves or waterfalls?
- 5 How would you describe the landscape in the region where you live?
- 6 What's the distance from the place where you live to the next big town?