

LISTENING TEST_06

Name:.....

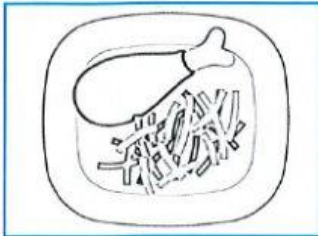
PAPER 3 LISTENING

PART 1 Questions 1-7

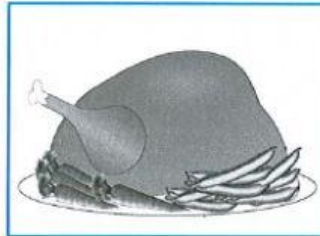
For each question, choose the correct answer.



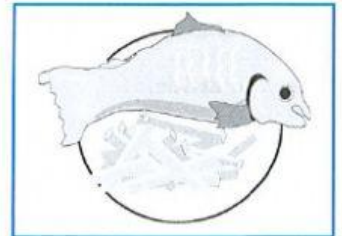
1. What will they eat?



A ☐



B ☐



C ☐

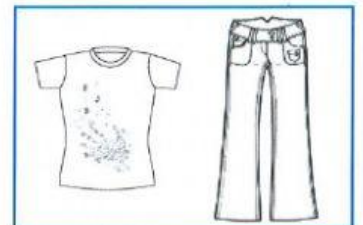
2. What will the girl wear to the party?



A ☐



B ☐

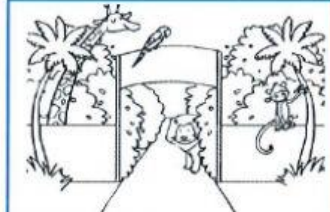


C ☐

3. Where will the student's tour of the city centre end?



A ☐

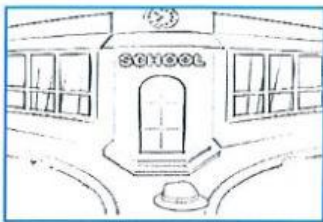


B ☐

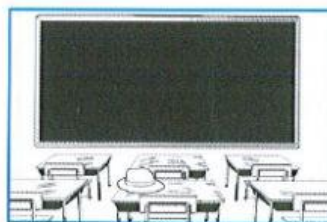


C ☐

4. Where was the boy's hat?



A ☐



B ☐



C ☐

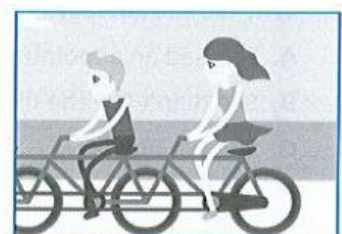
5. What will they do on Friday?



A ☐



B ☐



C ☐

6. What was wrong with the boy?



A ☐

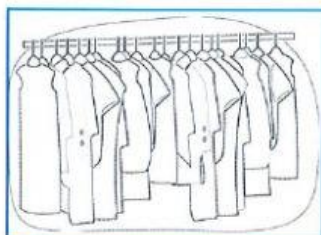


B ☐



C ☐

7. What is on special offer today?



A ☐



B ☐



C ☐

PART 2 Questions 8-13

For each question, choose the correct answer.



8. You will hear two friends talking about a neighbour's dog.

The boy thinks the dog

- A. needs more walks.
- B. is left alone for too long.
- C. is unfriendly.

9. You will hear two friends talking about a film.

Why did the girl leave the cinema early?

- A. She had an appointment with her dad.
- B. She didn't like the film.
- C. She felt unwell.

10. You will hear two friends talking about the maths lesson.

What do they agree on?

- A. They don't like the teacher.
- B. The work is getting harder.
- C. They won't pass the exam.

11. You will hear two friends talking about a school trip they went on.

What happened?

- A. There was a change of plan.
- B. Their teacher got angry.
- C. The students were disappointed.

12. You will hear two friends talking about a football match.

Who was the boy angry with?

- A. the coach
- B. the players
- C. the fans

13. You will hear two friends talking about a new leisure centre.

What did the boy like most about it?

- A. the design of the building
- B. the gym's equipment
- C. the swimming pool

PART 3 Questions 14-19

For each question, write the correct answer in the gap. Write **one or two words** or a **number** or a **date** or a **time**.

You will hear a teacher telling a group of students about a geography trip.

School Geography Trip

Date of Geography trip: Wednesday **(14)** _____

Each group will be given: a **(15)** _____

Length of walk: **(16)** _____

Person responsible for health issues: **(17)** Mr _____

Type of shoes to wear: **(18)** _____

Coach arrives at school at: **(19)** _____ p.m.



Play audio

PART 4 Questions 20-25

For each question, choose the correct answer.

You will hear an interview with a young teacher called Carol.



Play audio

20. Who inspired Carol to become a teacher?

- A. her parents
- B. her drama teacher
- C. her classmates

21. What is the most important thing about being a teacher, according to Carol?

- A. show how much they know about their subject
- B. be more intelligent than their students
- C. communicate well with their students

22. What does Carol have her students do if they aren't working well?

- A. extra homework
- B. a written test
- C. physical exercise

23. How does Carol feel about her career as a teacher?

- A. proud
- B. anxious
- C. disappointed

24. Carol's parents

- A. are disappointed with what she has achieved so far.
- B. are very satisfied with her career progress.
- C. feel sorry they didn't let her become an actor.

25. What does Carol want to do in the future?

- A. be a headteacher
- B. continue to teach
- C. do some acting