

# English for children

Write the words in the right place to form interrogative sentences.

why eat don't you?

friend, is best Daniela or Amanda who your ?

are from you where ?

one is which your car ?

food what favourite is your ?

you tennis often do how play ?

so you why tired are ?

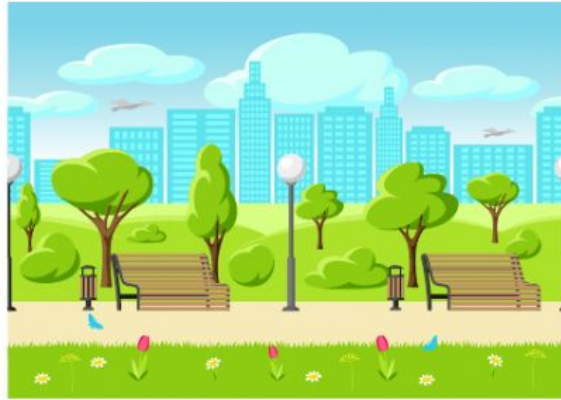
telephone is your what number ?

Students are many how school in?

next time English what is class our ?



# English for children



Park is an open place to relax and play. People use the park for walking. Parks have green grass, plants, and trees. Children love to play in parks. There are swings and seesaws to play. People visit parks in the morning and evening. Many people exercise in the park. Big parks will have fountains, statues, and ponds.



Lore Fonseca





What is a park?

What do people use parks for?

What do children like to do in the park?

When do people visit parks?

What can parks have?

