

# MODES

I Don't Particularly Like

Modes A Lot

(The first mode is the Ionian Mode and is just the major scale)

## Dorian Mode

### D Dorian Mode



The **Dorian mode** (e.g. used in the song *Drunken Sailor*) is the minor key but with a raised 6<sup>th</sup> and lowered 7<sup>th</sup> ie D minor would have a Bb and C# as 6<sup>th</sup> and 7<sup>th</sup> but this has a B natural and C natural

e.g. *Scarborough Fair*



You can build the Dorian mode on any starting note. It is the minor key but with raised 6<sup>th</sup> & lowered 7<sup>th</sup>.

e.g. *L'homme armée* melody – this is G Dorian. It is basically G minor (with a Bb) but with the 6<sup>th</sup> note raised From Eb to E and the 7<sup>th</sup> staying an F (instead of F# as in Gm)

L'hom-me, l'hom-me, l'hom-me ar - mé, l'hom-me ar-mé, L'hom-me ar-mé doit

on doub - ter, doit on doub-ter, On a fait par-tout cri - er, Que chas-

cun se viegne ar-mer d'un hau-bre-gon de fer L'hom-me, l'hom-me,

l'hom-me ar - mé, l'hom-me ar-mé, L'hom-me ar-mé doit on doub - ter.

# Phrygian Mode

I Don't Particularly Like  
Modes A Lot

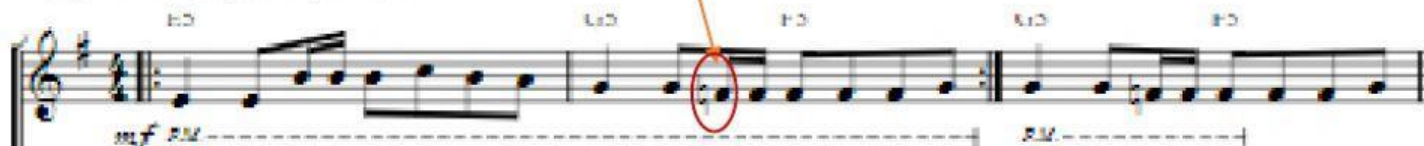
## E Phrygian Mode



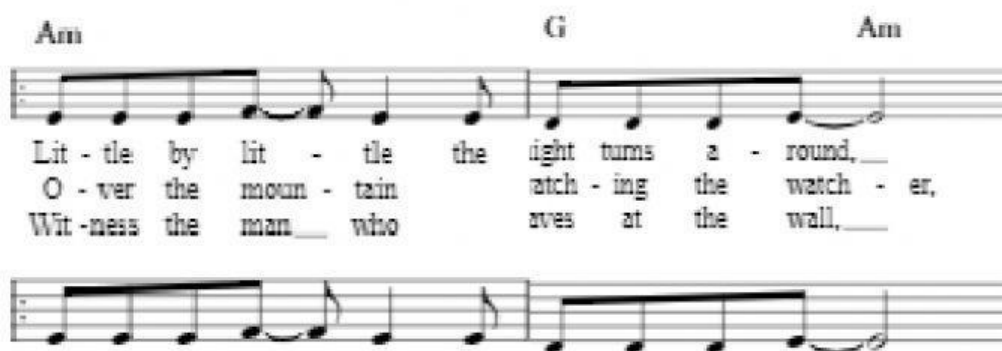
The **Phrygian mode** is similar to the minor key but with a lowered 2<sup>nd</sup> as well as lowered 6<sup>th</sup> & 7<sup>th</sup>

ie E Lydian is like E minor but with an F natural as well as C and D natural– it sounds very dark. It is the flattened 2<sup>nd</sup> that gives it its particularly dark quality

e.g. A Place for my Head



e.g. Set the controls for the heart of the sun – Pink Floyd



You can build the Phrygian mode on any starting note.  
Remember it is the minor key but with lowered 2<sup>nd</sup>, 6<sup>th</sup> and 7<sup>th</sup>

e.g. Opening chord progression of Pyramid Song – Radiohead –  
In F# minor but 2<sup>nd</sup> chord is built on the Phrygian flattened 2<sup>nd</sup> – G natural





# Lydian Mode

I Don't Particularly Like  
Modes A Lot

## F Lydian Mode



The **Lydian mode** is the major key but with a raised 4<sup>th</sup>  
ie F Lydian is like F major but with a B natural instead of a Bb – it sounds very bright

e.g. *Freewill* – Rush

You can build the Lydian mode on any starting note.  
Remember it is the major key but with raised 4<sup>th</sup>

e.g. *Hosanna in excelsis* (Sanctus – The Armed Man). In this movement the basic key is D minor. At this suddenly loud section the music dramatically transposes to Ab major but with a **raised D natural**, giving it great impact and brightness.

# Mixolydian Mode

I Don't Particularly Like  
Modes A Lot

## G Mixolydian Mode



The **Mixolydian mode** is the major key but with a lowered 7th  
 ie G Lydian is like G major but with an F natural instead of an F#  
 You can build the Phrygian mode on any starting note.  
 Remember it is the minor key but with lowered 7th

e.g. Norwegian Wood (This bird has flown)- Beatles

This is in E major but with lowered 7th – ie D natural instead of D#

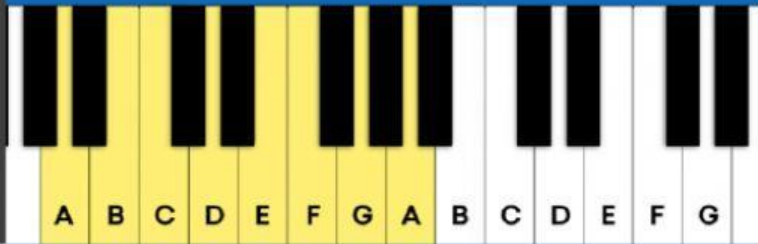
e.g. Clocks – Coldplay. This is in G major but with lowered 7th – ie F natural instead of F#



# Aeolian Mode

I Don't Particularly Like  
Modes A Lot

## A Aeolian Mode



The **Aeolian mode** is the natural minor – ie the minor key but without the raised 6<sup>th</sup> or 7<sup>th</sup> degree of harmonic or melodic minor  
ie A Aeolian is like A minor but **no** F# or G#  
You can build the Phrygian mode on any starting note. It is the minor key with lowered 7<sup>th</sup>

e.g. *All along the watchtower* – Bob Dylan

Am Am/G F G Am Am/G  
"THERE MUST BE SOME WAY OUT OF HERE," SAID THE JOKE-R TO THE  
THIEF, "THERE'S TOO MUCH CON - FU - SION,  
I CAN'T GET NO RE - LIEF." "BUS-NESS MEN, THEY  
DRINK MY WINE.. PLow-MEN DIG MY EARTH, NONE OF THEM A -  
LONG THE LINE KNOW WHAT AN-Y OF IT IS WORTH."

e.g. *Hello* - Adele

So hel-lo from the o-ther si-de, I mes. To tell you I'm sor-ry for eve-ry-  
rhing that I've done but when I call you ne-ver seem to be ho-me. Hel-lo from the out-si-de, at  
least I can say I've tri

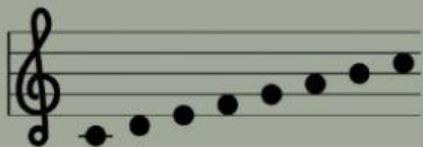
# Composing using modes

Experiment with writing a melody in one or more of these modes

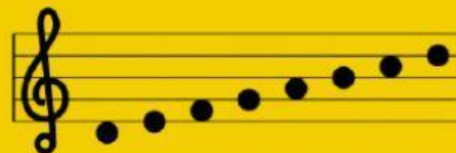
Choose one of the texts from the Mass and set a melody to the words

- Kyrie eleison
- Gloria
- Sanctus/ Hosanna
- Agnus Dei
- Benedictus

C Ionian Mode



D Dorian Mode



*Kyrie eleison.  
Christe eleison.  
Kyrie eleison.*

Possibly start with a **single line plainsong melody in E Phrygian mode**. Then resolve this into **A Aeolian mode**. At some of the cadences you could use a **Tierce de Picardie** by adding a G# to the final Am chord

*Sanctus, Sanctus, Sanctus, Dominus  
Deus Sabaoth.  
Pleni sunt coeli et terra gloria tua.  
Osanna in excelsis.*

Possibly use **D Dorian mode** and then brighten by going into **C Ionian mode** at Hosanna (or even **F Lydian mode**)

*Gloria in excelsis Deo.*

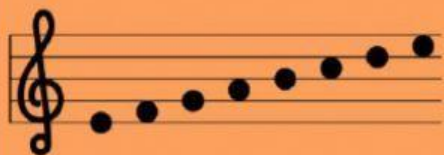
*Et in terra pax  
hominibus bonæ voluntatis.  
Laudamus te; benedicimus te;  
adoramus te; glorificamus te.  
Gratias agimus tibi  
propter magnam gloriam tuam.*

Bright text – possibly use **F Lydian mode** (e.g. F with raised 4<sup>th</sup>) as well as **Ionian** (C major)

*Agnus Dei,  
qui tollis peccata mundi,  
miserere nobis.  
Agnus Dei.  
Dona nobis pacem.  
or  
Benedictus qui venit  
in nomine Domini.  
Osanna in excelsis.*

Calm text – possibly use **G Mixolydian** and **C Ionian** or add an F# in places to go to G major for 'Osanna in excelsis'

E Phrygian Mode



F Lydian Mode



**I Don't Particularly Like  
Modes A Lot**

A Aeolian Mode



G Mixolydian Mode

